

SIMPLY
CHRISTMAS

PAPER

Part 1 of 4 great printable sets!

1



Winter woodland



Cute festive pets



**OVER
400**

*Festive shapes,
toppers &
papers to print*

**PLUS STEP-BY-
STEPS!**



Santa's workshop



Classic Nativity



PRINT OUT THE WHOLE SET OR JUST THE ELEMENTS YOU NEED WITH THESE
FABULOUSLY FESTIVE COLLECTIONS! INCLUDES INSPIRATION & INSTRUCTIONS



Layer up a winter woodland



Shopping list

Winter woodland printables, plus

- * Blue and white card
- * Circle dies, festive ornate dies (optional)
- * Glitter glue, glitter dust – silver and iridescent
- * Spray glitter varnish – Silver
- * Gems * Adhesive sheets
- * Scissors/knife * Glue
- * Die-cutting machine

These Winter Woodland printables layer up to create stunning scenes on your festive cards

Add frosty enchantment to your Christmas cards and create wintry cards with Winter Woodland printables illustrated by Esther Curtis.

Designer Vicky Bailey has transformed Esther's watercolour illustrations into four seasonal scenes to inspire your festive

card making. She says, "Plain white paper makes great snowy scenes – simply tear the edge and add some glitter. Multiple layers create great depth on a card too."

Glitter is an essential ingredient, so make sure you stock up your stash beforehand to add lashings of icy sparkle to the trees, sentiments and backgrounds!



Make an icy easel

Show off your creativity by making lovely and unusual easel cards. By adding loads of die-cuts, they make great focal points for the Christmas mantelpiece. Larger gems make great easel card stoppers, too.



Your card kit

Scroll down for the full card set and print the pages you want to use. For more festive printables, search www.gathered.how



TURN FOR MORE 





How to... Make a snowy scene

This clever gatefold opens out to reveal a snowy scene!



1

Cut and fold two pieces of 12.5x25cm white card in half, then cut a triangle off each opening flap from two opposite sides. Mat the pieces together to create the shaped card.



2

Using two contrasting blue papers, cut four triangle-shaped papers and mat them onto the inside and outside of the side flaps, leaving a thin white border around the edges.



3

Trim forest paper to measure 11.75x11.75cm and mat onto slightly larger dark blue card. With strips of spare white card, gently tear along the long edge on one side as shown.



4

Cover the torn card strips with a thin layer of tacky PVA glue, then sprinkle some glitter over the top. Once dry, dust off any excess glitter and layer the strips onto the forest panel.



Top tip

Use a tray when glittering card strips to keep your space tidy.



5

Die-cut some decorative corners using some adhesive sheets. Peel away the protective layer and cover the decorative corners with glitter. Stick them onto the side panels of the card.



6

Carefully cut out the large deer leaving a narrow white border around the edge. Add some sticky foam pads onto the back and stick the deer onto the forest scene.

Take a look at our reader testers' creations on the next page!



How to... Create a frosty forest

Make the forest papers the focus of this card by framing them in an embellished circle aperture

1 Cut a piece of blue card to measure 12x12cm, then die-cut a large circle in the centre of the panel to create an aperture for your card front.

2 Trim a piece of the tree paper taken from the printables to measure the same size as the blue paper. Cut out and add a tree create a 3D effect.

3 Gently tear some white paper to create some hills. Repeat with a slightly larger piece. Layer at the base of the tree paper. Add glitter to highlight layers.

4 Add glitter to the single tree on the forest background. Once dried, attach the blue aperture onto the background with sticky foam pads to create depth.

5 Cut out some trees, a sentiment and holly and layer around the aperture with sticky foam pads. Add a die-cut corner flourish if desired and finish with glitter!



7

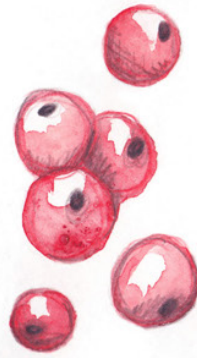
Stamp the greeting and add onto the centre panel. Attach the forest scene panel onto the centre of the card. Finish by adding some glitter glue around the sentiment.



Say it with sparkle

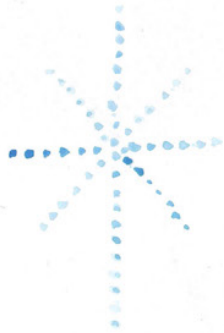
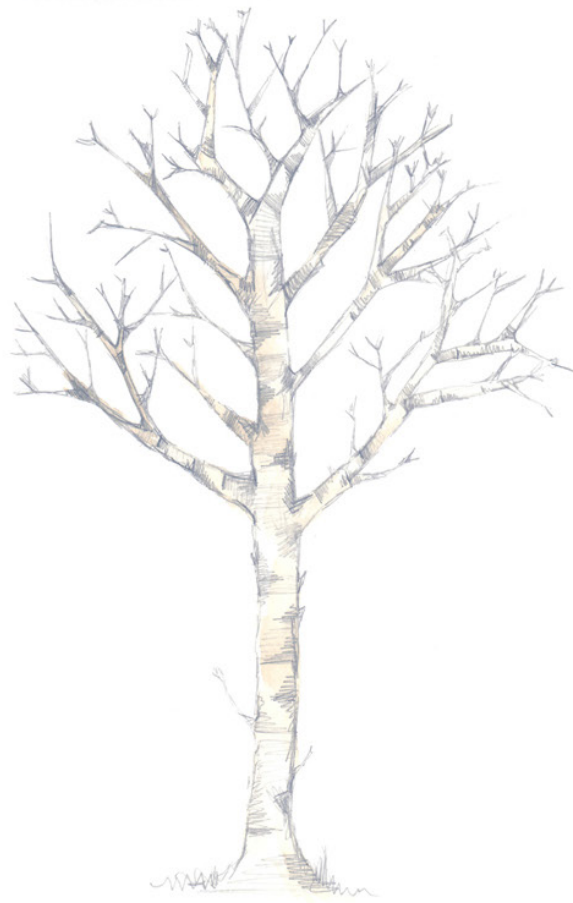
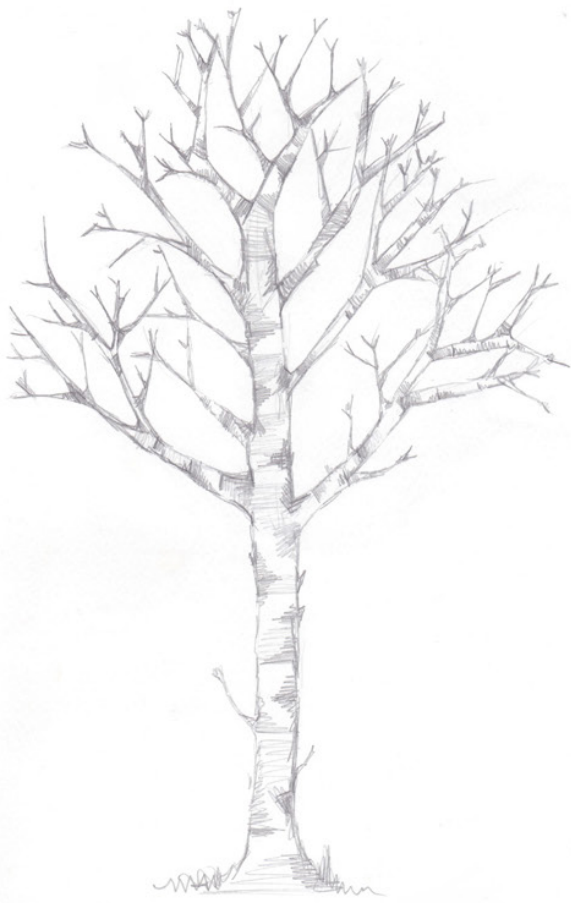
We all know someone who loves a stag at Christmas

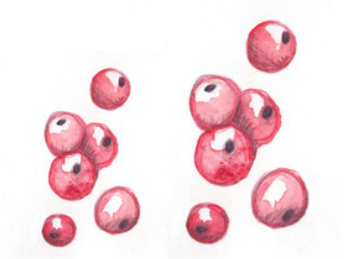
Adding glitter to elements of the background in your wintry cards, means they really come to life and look pretty too! Cut out a stag and stick in place with 3D sticky pads and layer up the holly designs for a flourish in the top corner. Three co-ordinating gems in a row is a classic way to add balance to a handmade card.

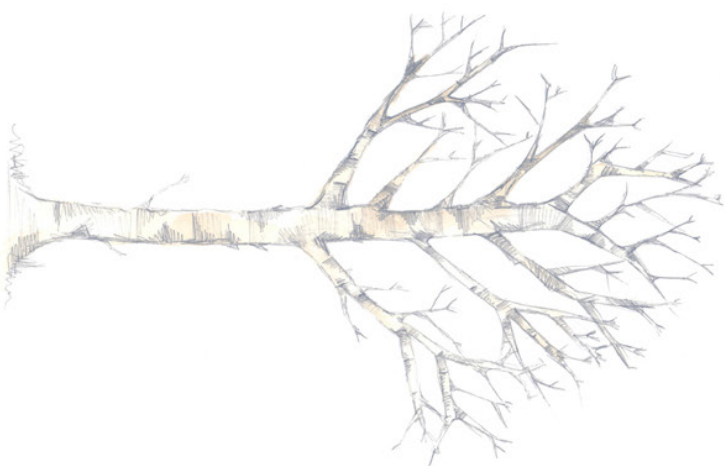


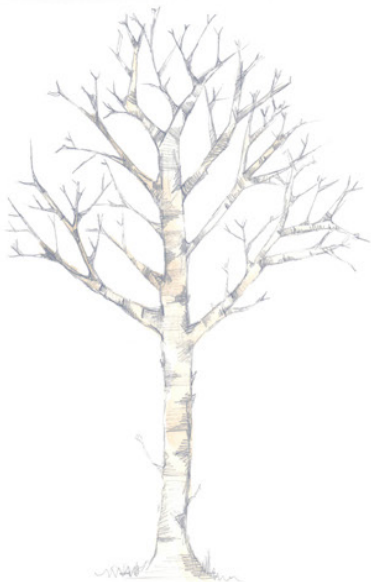
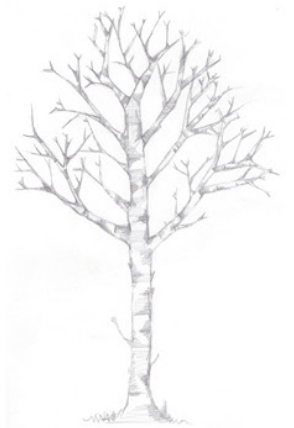
*Winter
woodland*







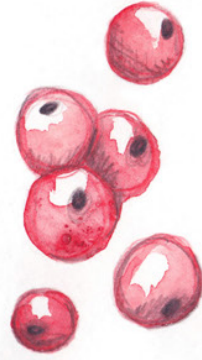


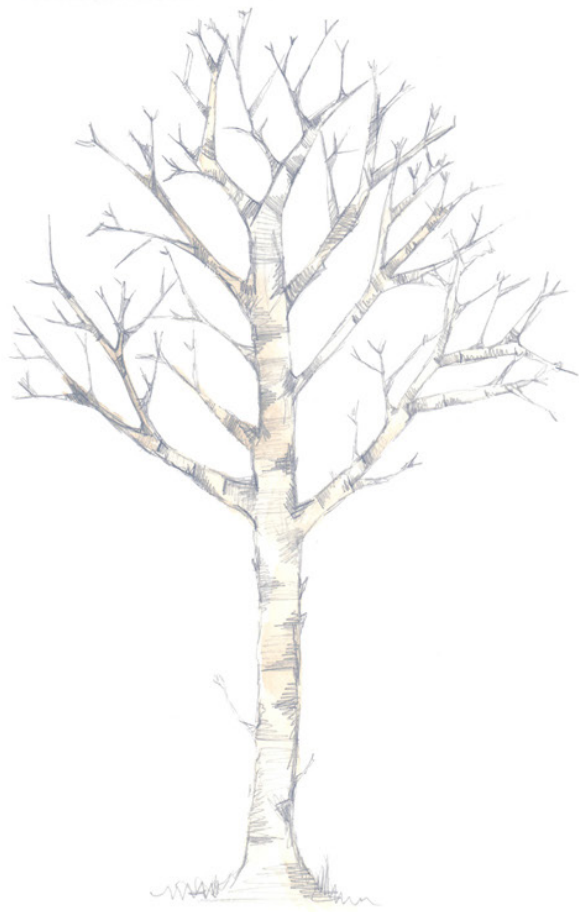
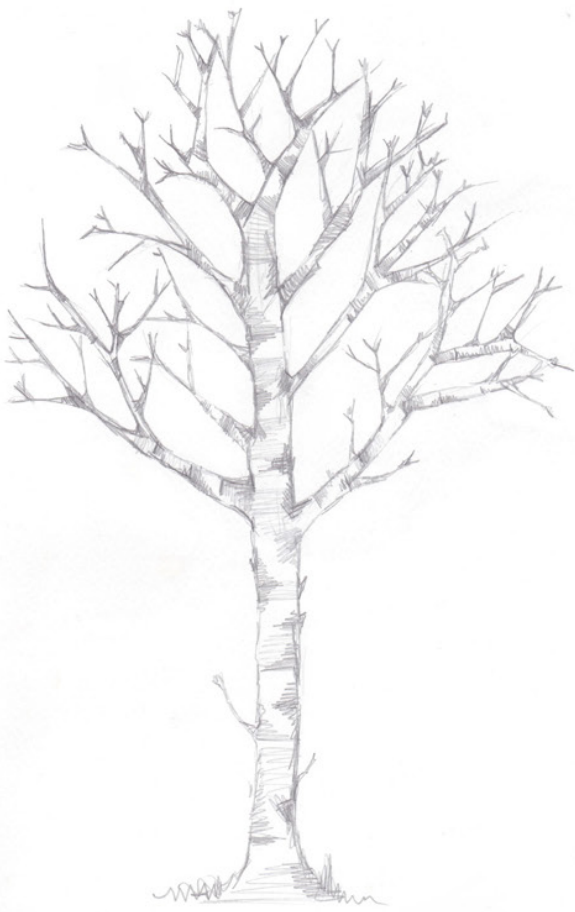




*Winter
woodland*



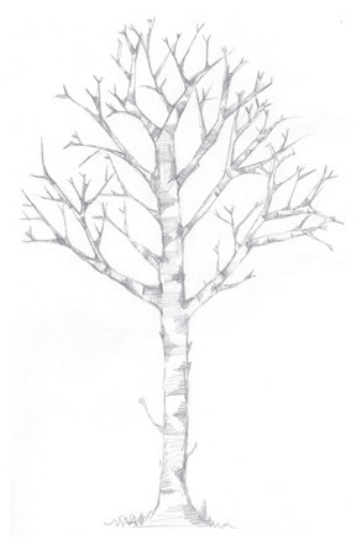




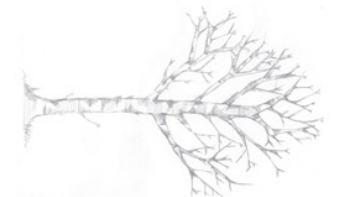
*Winter
woodland*

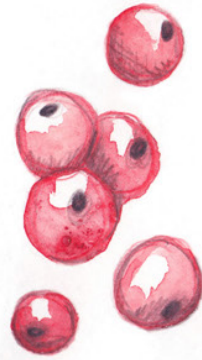






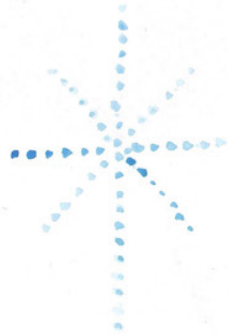
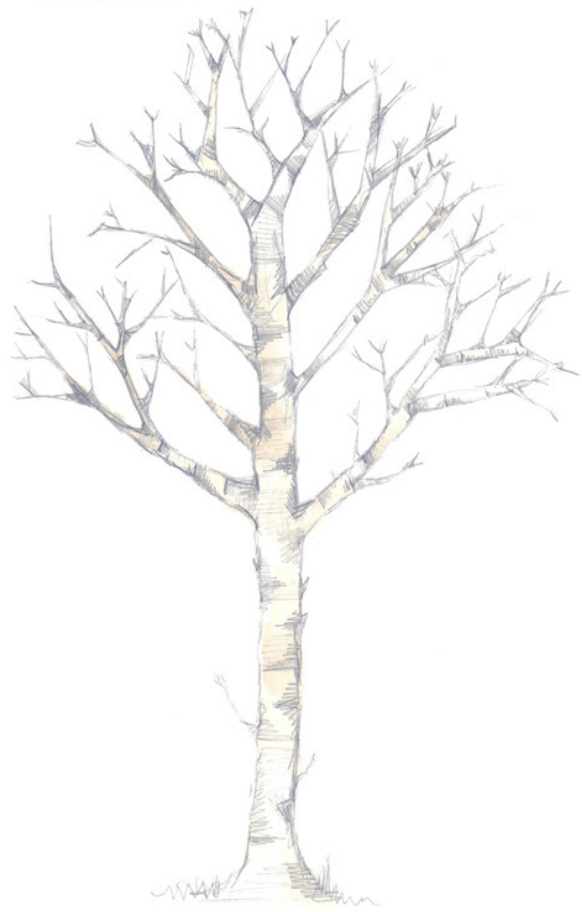
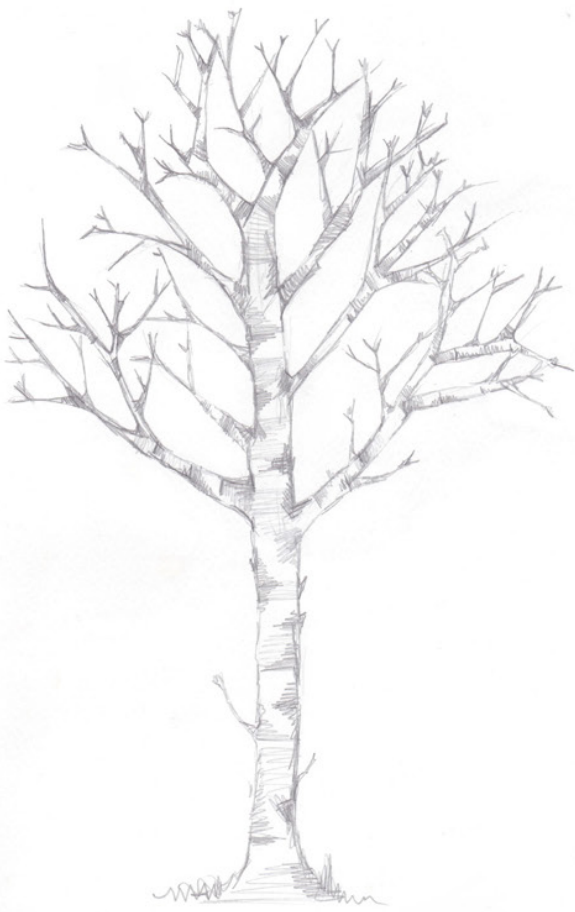
*Winter
woodland*

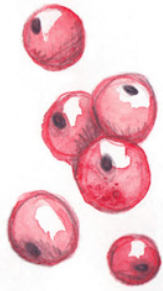
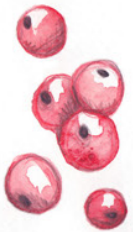




*Winter
woodland*







GET YOUR COPY OF SIMPLY CHRISTMAS MAGAZINE

If you don't have your 2023 issue yet, order a shiny new copy from www.buysubscriptions.com/simplychristmas2023 find us on Readly or Pocketmags or download a digital edition at www.zinio.com



COPYRIGHT NOTICE

We hope you enjoy making these card projects from Simply Christmas, originally published with Papercraft Inspirations magazine. The copyright for these designs and templates belongs to the designer of the project and/or Our Media. The magazines and all of its contributors work extremely hard to create projects for you to enjoy, so please don't re-sell or distribute these patterns without seeking permission first. Please do not make any part of the templates or instructions available to others through your website or a third party, or copy it multiple times without our permission. Copyright law protects creative work and unauthorised copying is illegal. We appreciate your help.