

# SIMPLY CHRISTMAS

# PAPER

Part 2 of 4 great printable sets!



Winter woodland



Cute festive pets



**OVER 400**  
Festive shapes,  
toppers &  
papers to print  
**PLUS STEP-BY-STEP!**



Santa's workshop



Classic Nativity



PRINT OUT THE WHOLE SET OR JUST THE ELEMENTS YOU NEED WITH THESE FABULOUSLY FESTIVE COLLECTIONS! INCLUDES INSPIRATION & INSTRUCTIONS


# Give Santa's elves a hand



## Shopping list

### Santa's Workshop printables, plus

- \* Snow effect glitter
- \* White & coloured card
  - \* White paper
  - \* Square dies
  - \* Mini pegs
  - \* Baker's twine
  - \* Scissors/knife
  - \* Glue
- \* Die-cutting machine

 **Template included**

Find Mr Claus and his little helpers busy getting ready in this fun set of printables

**S**tep into the magical world of Santa's workshop with these fun designs illustrated by Emily Waite. Create super-sweet Christmas scenes featuring cheeky elves and piles of traditional toys then add bright, festive papers in complementary colours. Don't

forget to include Santa, too – you'll find him making his list and checking it twice.

Designer Sarah Jackman-Read has come up with four card designs for you to try, which are sure to enthral children and adults alike. Use the papers, toppers and sentiments to make your own!





## Your card kit

Scroll down for the full card set and print the pages you want to use. For more festive printables, search [www.gathered.how](http://www.gathered.how)

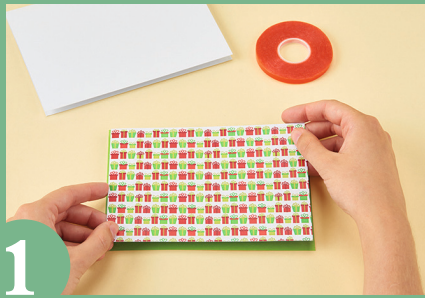
## Box clever

Surprise your recipients by placing the Santa's toy shop gift box inside an exploding box card. Punch a small hole in the roof of the box and thread with baker's twine to secure.



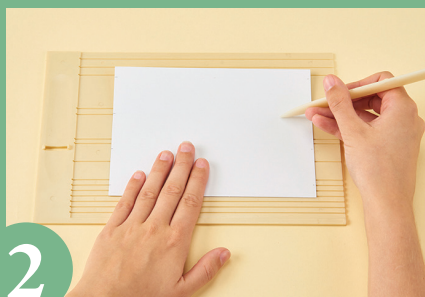
# How to... Create a box ledge

Add dimension by creating a stepped card front



1

Create a 12x17cm, top-fold, white card blank. Trim present-patterned paper to measure 11x16cm then layer it on top of green card and attach the panel onto the card front.



2

Trim white card to 12.5x17cm then score across it at 1cm, 4.5cm, 8cm and 11.5cm down from the top edge. Run double-sided tape along the top and bottom 1cm-wide scored sections.



3

Cut two 3x16.5cm pieces of green card then attach either side of the central section on the card from step 2. Affix a 3.5x17cm piece of train-patterned paper to the central section.



4

Trim white card to 2.5x16cm and stick a door mat topper in the middle. Glue faux snow over the rest of the strip, let it dry then glue the strip to the top green card panel from step 3.



5

Once dry, fold the panel from step 4 into a box shape (3 sides and two tabs to attach). Glue to the bottom of the card front. Cut out some toppers (eg. drum and tree) for the main scene.



6

Cut out the Santa's workshop door elements then use sticky foam pads to layer them. Trim along the right-hand side of the door, so it opens slightly, then add an elf behind it.

## Top tip

Elves look super-cute when peeking out from behind card elements





## How to...Make a bendy card

Include a curved panel on your card front to create a toyshop counter effect!

**1** Create a 17x13cm card blank. Score vertically at 1.5cm in from the left-hand side of a 5x13.5cm piece of white card. Cut a tab in the right-hand side. Add double-sided tape to the scored section and attach it to the left-hand side of the card front.

**2** Trim a piece of present-patterned paper for 16x12cm, and another to 4x10cm.

Layer both pieces onto slightly larger panels of green card then attach to the card front and the tabbed panel.

**3** Cut a 1.5cm slit in the card front, 3cm in and 3.5cm up from the bottom-right corner, then slip the tab into it. Fussy cut toys then glue to the bottom-right corner.

**4** Attach a fussy-cut Santa to the top of the curved panel. Use sticky foam pads to attach Santa's arms, leaving his hands free. Trim white paper to 14x2cm, curl it up then adhere the end into Santa's hands.



7

Use sticky foam pads to attach the door, tree and drum to the card front. Fussy cut two more elves then attach one behind the top of the door and one inside the front box panel.



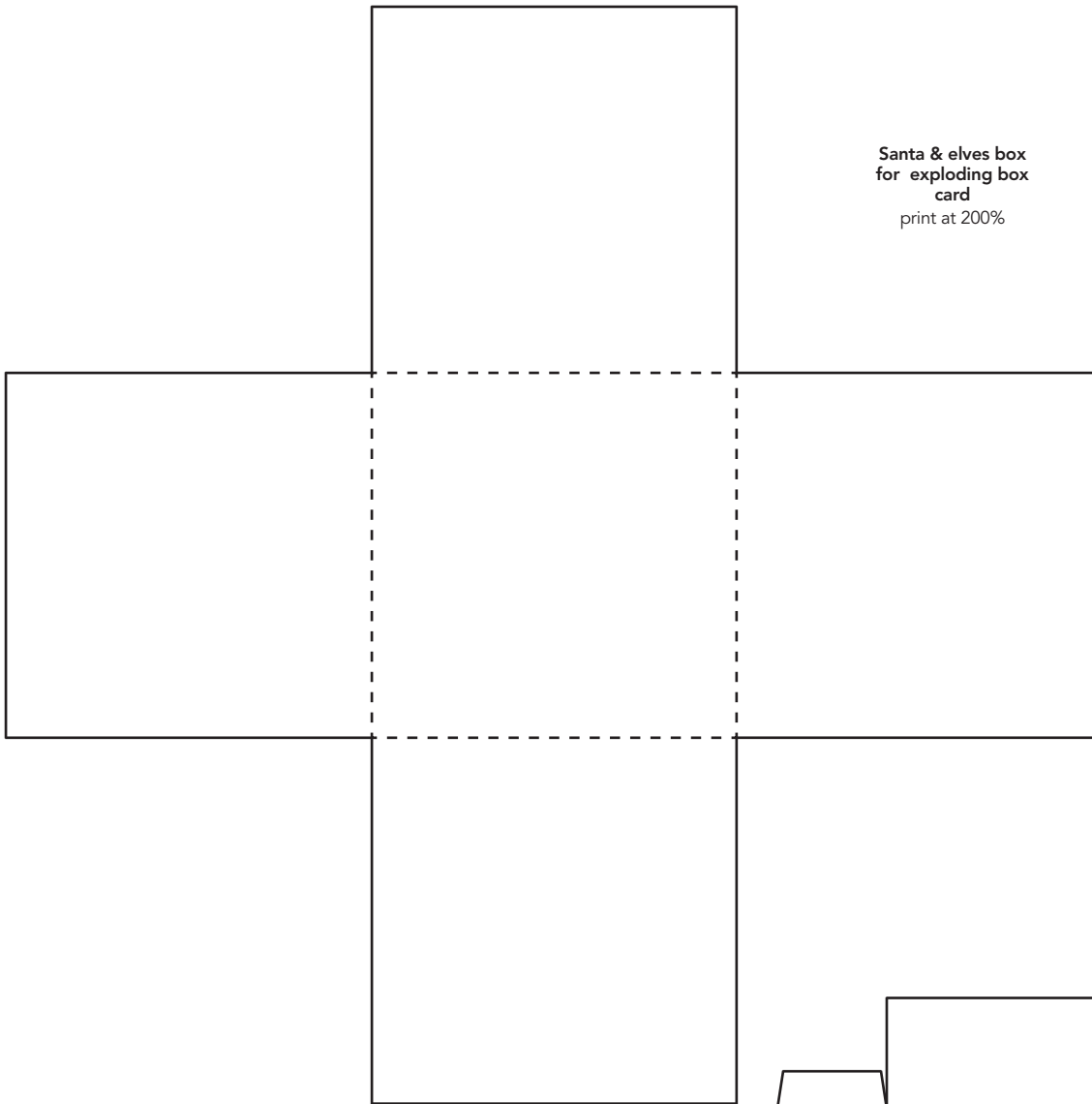
## Santa's laundry

Make a fun card where Santa's changes of clothes are on the line!

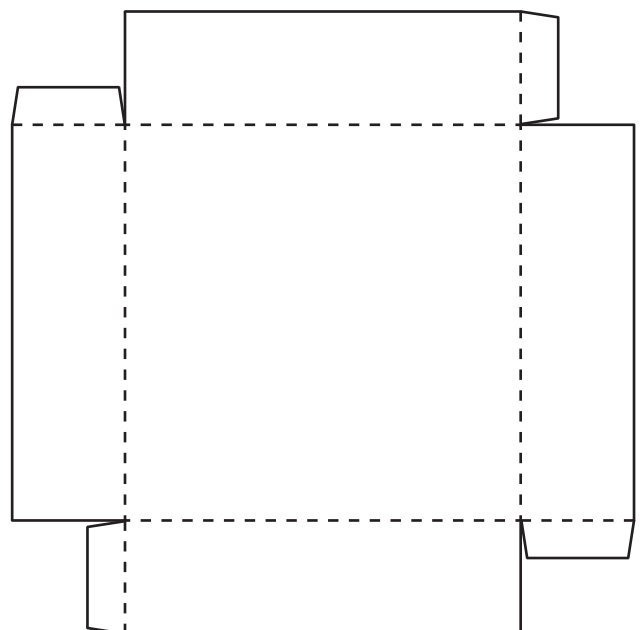
The large square aperture in this card's front means your recipient can dress up Santa in the outfits pegged onto the baker's twine washing line, by folding the tabs into place. Baker's twine bows and rows give it a good finish.

# Templates

*Print out these templates at the size indicated to make your festive cards!*



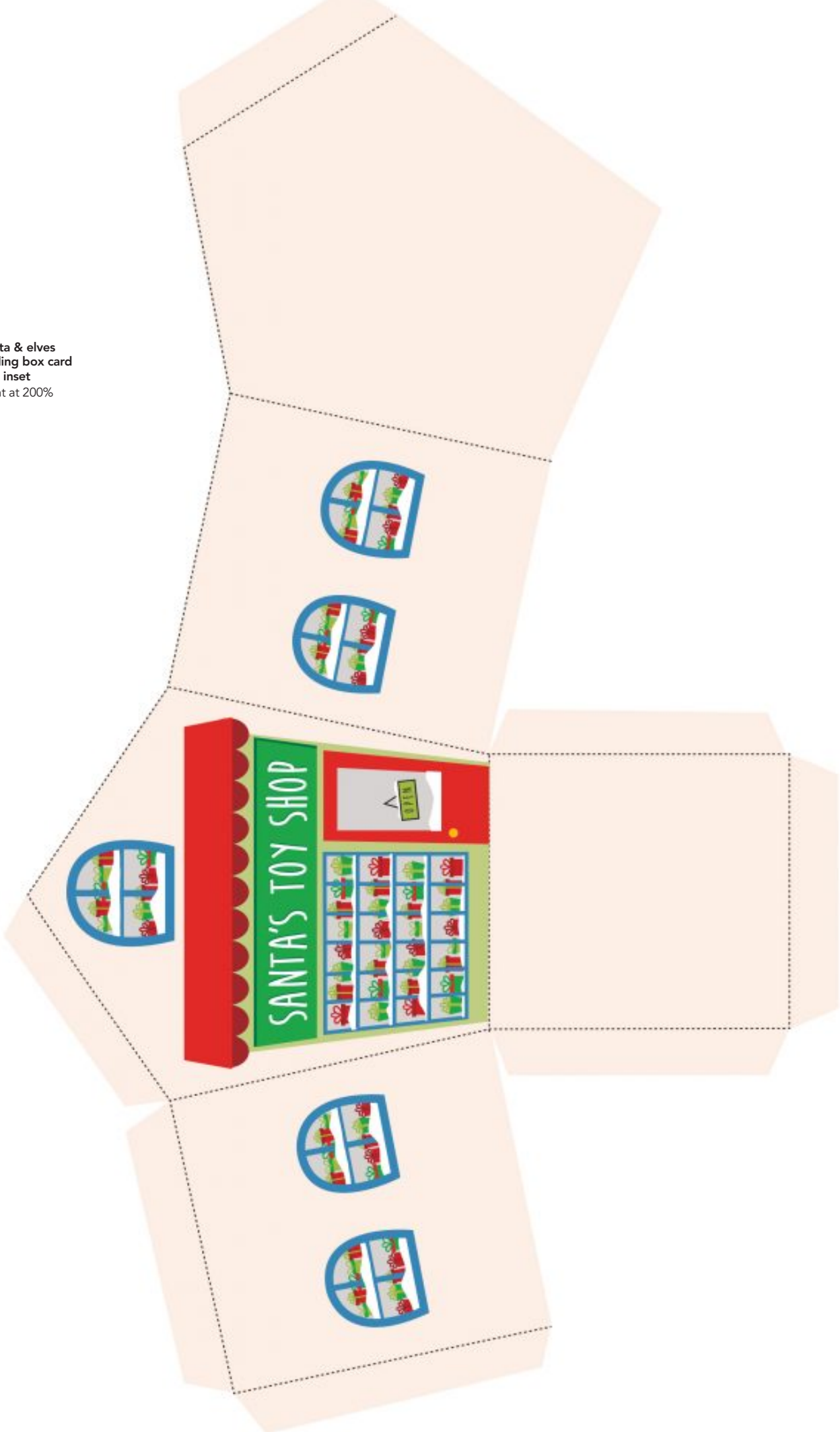
Santa & elves box  
for exploding box  
card  
print at 200%



#### **COPYRIGHT NOTICE**

*We hope you enjoy making these card projects from Simply Christmas, originally published with Papercraft Inspirations magazine. The copyright for these designs and templates belongs to the designer of the project and/or Our Media. The magazines and all of its contributors work extremely hard to create projects for you to enjoy, so please don't re-sell or distribute these patterns without seeking permission first. Please do not make any part of the templates or instructions available to others through your website or a third party, or copy it multiple times without our permission. Copyright law protects creative work and unauthorised copying is illegal. We appreciate your help.*

Santa & elves  
exploding box card  
inset  
print at 200%





*Santa's workshop*



MERRY CHRISTMAS

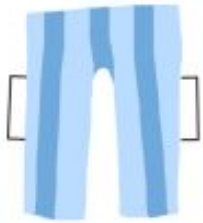
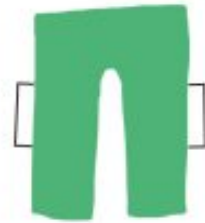
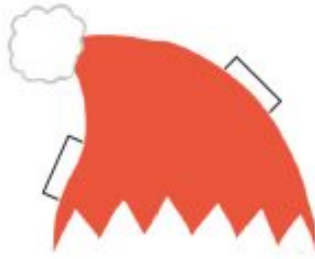








*Santa's  
workshop*





*Santa's workshop*



MERRY CHRISTMAS



SANTA  
CLAUS  
IS COMING  
TO TOWN





## GET YOUR COPY OF SIMPLY CHRISTMAS MAGAZINE

If you don't have your 2023 issue yet, order a shiny new copy from [www.buysubscriptions.com/simplychristmas2023](http://www.buysubscriptions.com/simplychristmas2023) find us on Readly or Pocketmags or download a digital edition at [www.zinio.com](http://www.zinio.com)



### COPYRIGHT NOTICE

We hope you enjoy making these card projects from Simply Christmas, originally published with Papercraft Inspirations magazine. The copyright for these designs and templates belongs to the designer of the project and/or Our Media. The magazines and all of its contributors work extremely hard to create projects for you to enjoy, so please don't re-sell or distribute these patterns without seeking permission first. Please do not make any part of the templates or instructions available to others through your website or a third party, or copy it multiple times without our permission. Copyright law protects creative work and unauthorised copying is illegal. We appreciate your help.