

SIMPLY
CHRISTMAS

PAPER

Part 4 of 4 great printable sets!



Winter woodland



4

Cute festive pets



**OVER
400**

*Festive shapes,
toppers &
papers to print*

**PLUS STEP-BY-
STEPS!**



Santa's workshop



Classic Nativity



PRINT OUT THE WHOLE SET OR JUST THE ELEMENTS YOU NEED WITH THESE
FABULOUSLY FESTIVE COLLECTIONS! INCLUDES INSPIRATION & INSTRUCTIONS


For the love of pets!



Shopping list

Festive Pet printables, plus

- * Red and green glittery papers
- * White & coloured card
 - * Acetate
 - * Circle & square dies
 - * Glitter bows
 - * Bells
 - * Glitter
 - * Gems
 - * Scissors/knife
 - * Glue
 - * Die-cutting machine

 **Template included**

Don't forget the pets this festive season, add them to colourful cards for a cute greeting

Whether you're a cat person, a dog person, or you prefer guinea pigs and goldfish, we've got a menagerie of gorgeous pet-themed printables for you to add to your crafty Christmas creations.

Illustrator Naomi Skinner's collection comes with designs featuring wrapped gifts, which you can either use as a

backing paper or cut out the individual elements to add them to your projects. You can also adapt some of the designs for birthday cards – after all, adorable pets aren't just for Christmas!

Take a look at designer Sarah Jackman-Read's fun projects, including shaped designs, shakers and interactive elements and make them yourself!



Your card kit

Scroll down for the full card set and print the pages you want to use. For more festive printables, search www.gathered.how

Call it puppy love

Use the template provided to create this super-cute kennel card. Why not attach the puppy to a spring, to create a 3D effect, too. Cut out the centre of a wreath printable and back with spotty paper to decorate the top of the kennel.



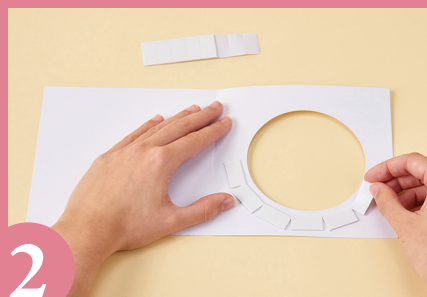
How to... Make a sweet slider card

Use pennies to create fun interactive designs



1

Create a 14.5x14.5cm, white, top-fold card base. Trim foliage paper to 13.5x13.5cm, layer it onto red glitter paper then adhere the completed panel onto the card front.



2

Die cut a 10.5cm-wide circle in the card front. Open the card, add sticky foam pads around the aperture, leaving a small gap, then stick a 13x13cm piece of paper on top, face down.



3

Stick a 10x10cm piece of red spotty paper onto white card then die cut an 8cm circle through it. Use sticky foam pads to attach the circle in the centre of the aperture, as shown.



4

Create a 2x14.5cm strip of patterned paper. Stick it below the aperture then add a fussy cut sentiment with sticky foam pads. Fussy cut a guinea pig and attach it to the spotty circle.

Top tip

When cutting out the animals, leave a small amount of white around the edge, so they really stand out on the card



5

Fussy cut three wrapped gifts and adhere them onto coins. For the thinner shapes, cover the coins in papers that match the card then add the thinner fussy-cut gifts on top.



6

Add sticky foam pads to three more coins then place them in the gap between the aperture edge and the spotty die-cut circle, as shown, then attach the decorated coins on top.

ard



How to...make a shaker card

Create a gorgeous shaker card, using iridescent glitter for snow

1 Create an 18x13cm card blank and layer a piece of iridescent glitter paper on top, leaving a narrow border. Trim red spotty paper to 16.5x11.5cm, layer it onto yellow card then adhere it to the card front.

2 Die cut a 10cm-wide square of gift-patterned paper then die cut an 8cm-wide circle through it.

3 Stick acetate behind the circle aperture then run foam tape around it. Sprinkle iridescent glitter onto the acetate. Trim foliage paper to 9.5x9.5cm then stick it, face-down, onto the foam tape. Adhere the panel towards the top of the card front.

4 Trim patterned paper to 2x13.5cm, layer it onto yellow card, adhere it towards the bottom of the card then use sticky foam pads to attach a sentiment.

5 Add a fussy-cut dog, a glitter bow and a bell to the shaker. Finish with gems.



7

Add a glitter bow, topped with a bell, on the left-hand side of the sentiment. Complete the design by adding adhesive gems in each corner of the card front.



Festive stepper

Show off as many cute critters as you like with this fab stepper card

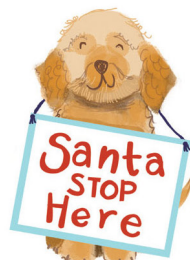
A stepper card is the perfect way to showcase lots of cute printables. For basic instructions on making a stepper card, head to www.gathered.how/papercraft/card-making/how-to-make-a-stepper-card This card has enough room for a large topper in the centre and two either side, so you can include all your favourite designs.

Festive
pets



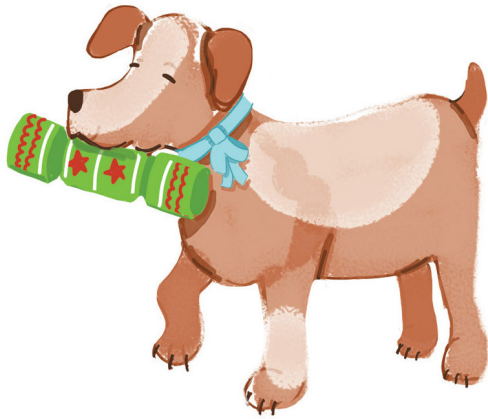
Festive
pets

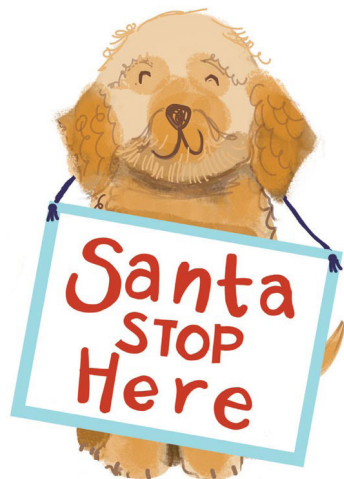






*Festive
pets*





GET YOUR COPY OF SIMPLY CHRISTMAS MAGAZINE

If you don't have your 2023 issue yet, order a shiny new copy from www.buysubscriptions.com/simplychristmas2023 find us on Readly or Pocketmags or download a digital edition at www.zinio.com



COPYRIGHT NOTICE

We hope you enjoy making these card projects from Simply Christmas, originally published with Papercraft Inspirations magazine. The copyright for these designs and templates belongs to the designer of the project and/or Our Media. The magazines and all of its contributors work extremely hard to create projects for you to enjoy, so please don't re-sell or distribute these patterns without seeking permission first. Please do not make any part of the templates or instructions available to others through your website or a third party, or copy it multiple times without our permission. Copyright law protects creative work and unauthorised copying is illegal. We appreciate your help.