

# Cashmerette™





## Ardley Pants

### Sewing the Curve

#### Size Key

US 12 / UK 16	-----
US 14 / UK 18	.....
US 16 / UK 20	-----
US 18 / UK 22	- . - . -
US 20 / UK 24	-----
US 22 / UK 26	-----
US 24 / UK 28	- - - - -
US 26 / UK 30	-----
US 28 / UK 32	=====
US 30 / UK 34	-----
US 32 / UK 36	-----

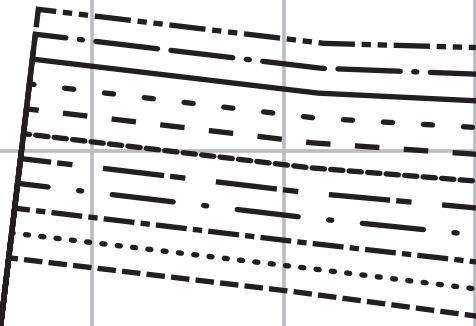
#### Legend

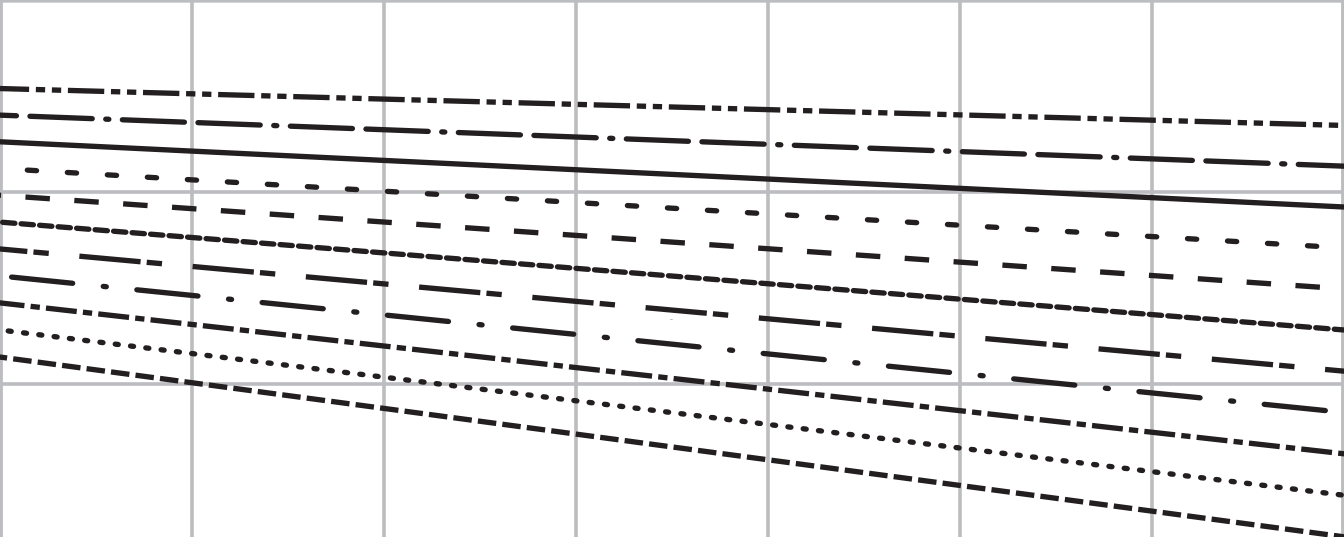
	Notch
	Lengthen/ shorten line
	Grainline
	Mark with chalk

This pattern (including designs, illustrations, images, text and all other aspects) are copyright Cashmerette, LLC, 2023. This pattern is for domestic use only. No part of this product may be reproduced, resold, transmitted, or shared in any form. Items from this pattern may not be produced for resale. All rights reserved.

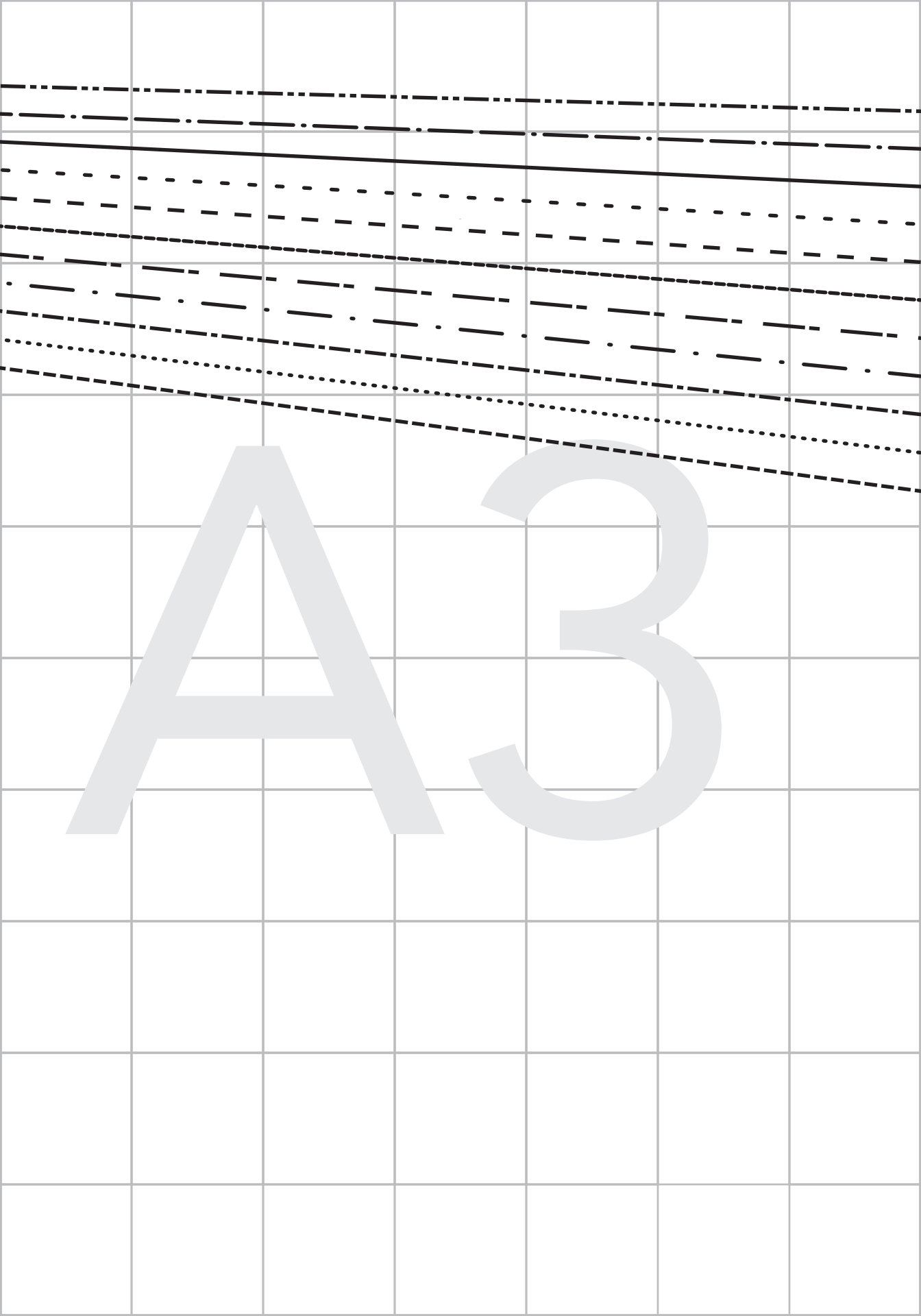
1 x 1 inch  
square

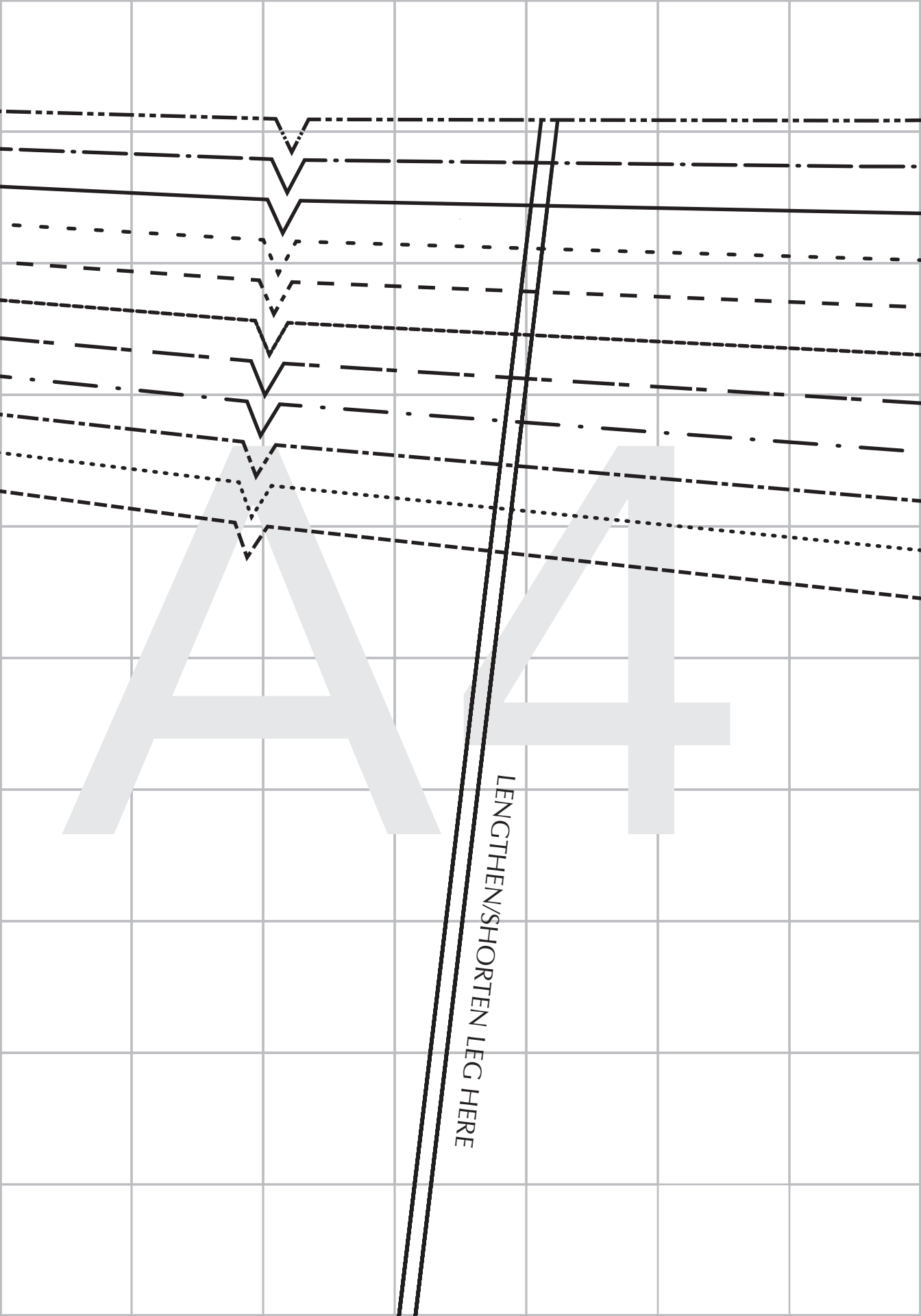
Check your  
printing!



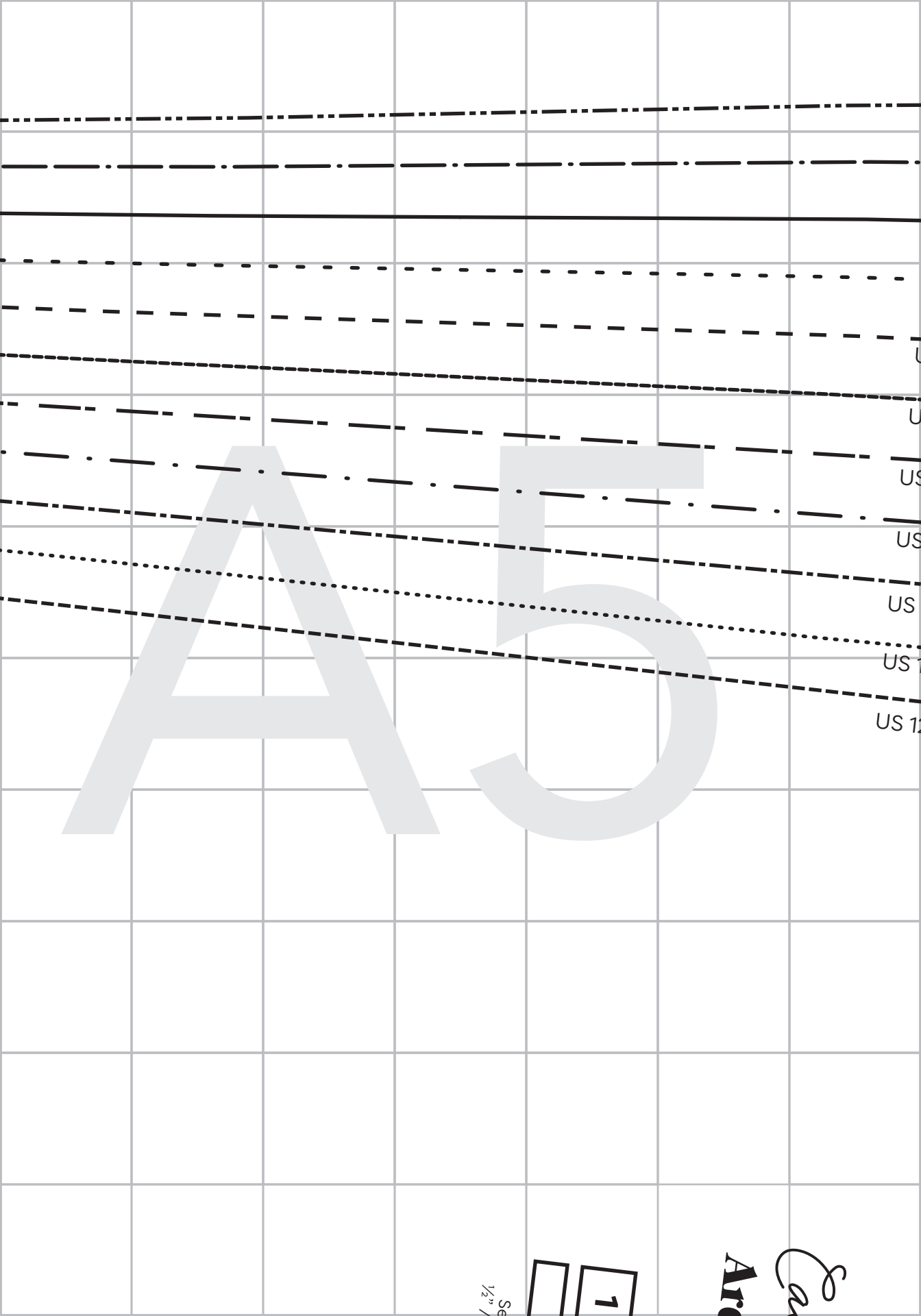


A 2





LENGTHEN/SHORTEN LEG HERE



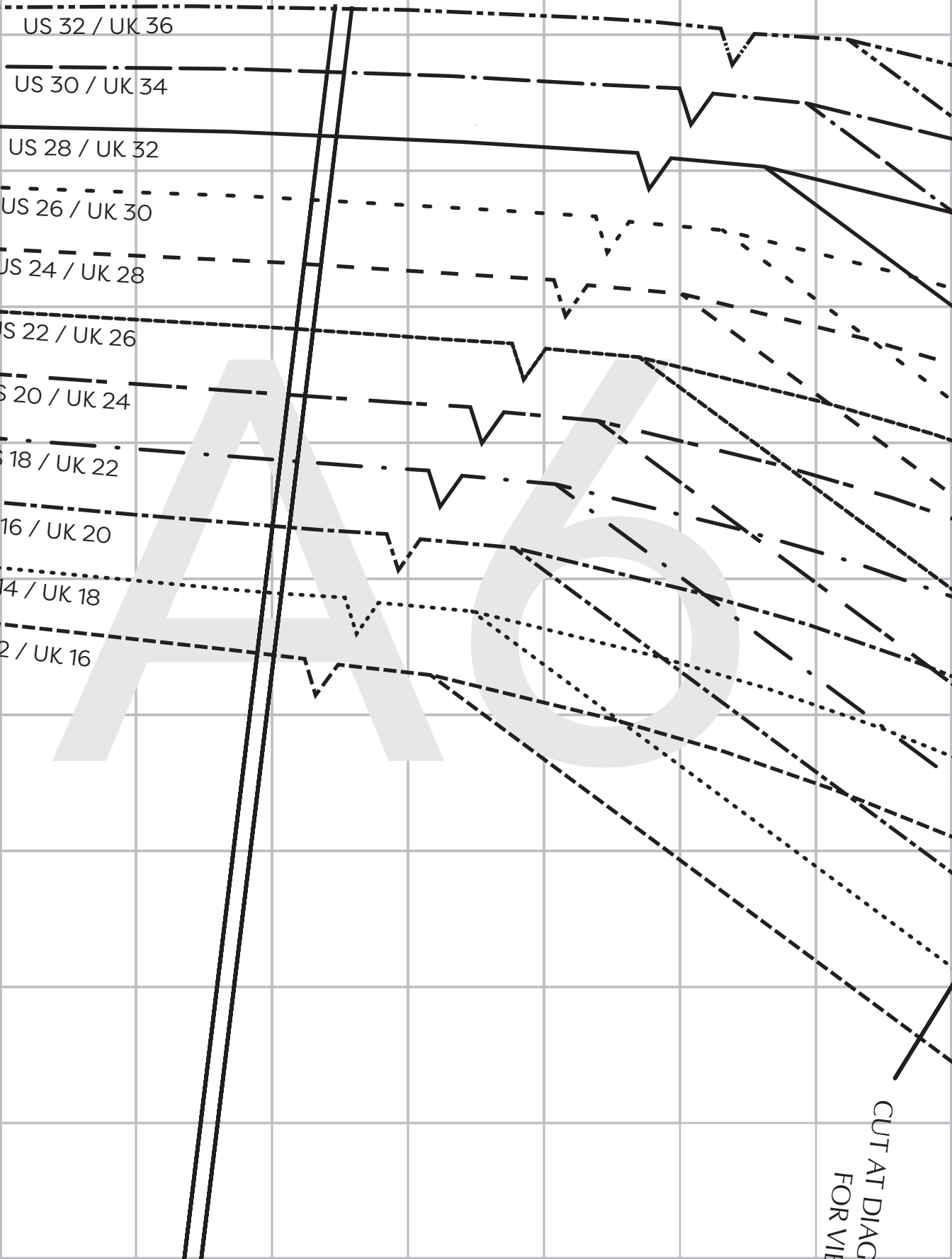
A

5

U  
U  
US  
US  
US  
US  
US  
US 12

1/2"  
Se  
1

Ar  
Can



US 32 / UK 36

US 30 / UK 34

US 28 / UK 32

US 26 / UK 30

US 24 / UK 28

US 22 / UK 26

US 20 / UK 24

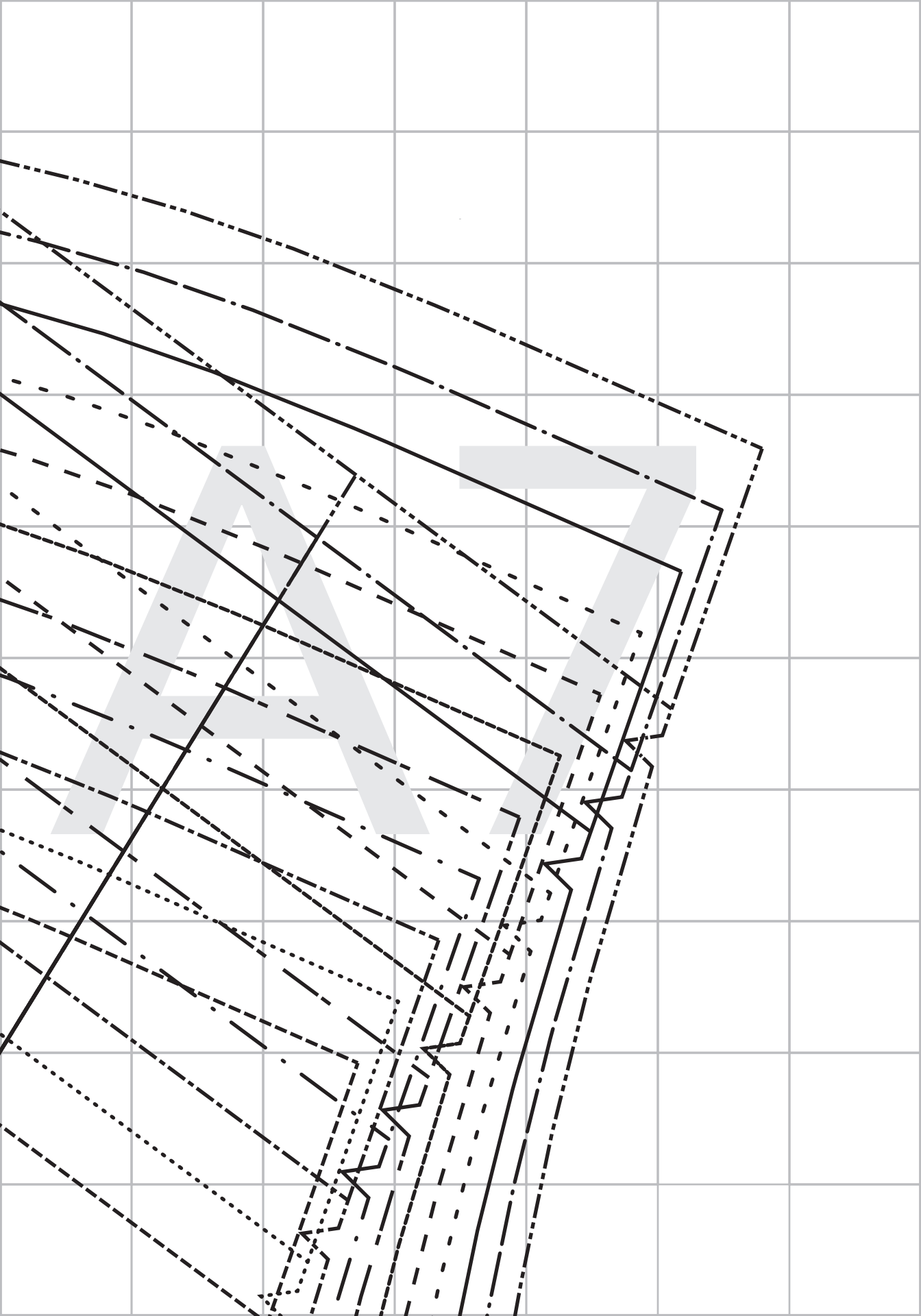
US 18 / UK 22

US 16 / UK 20

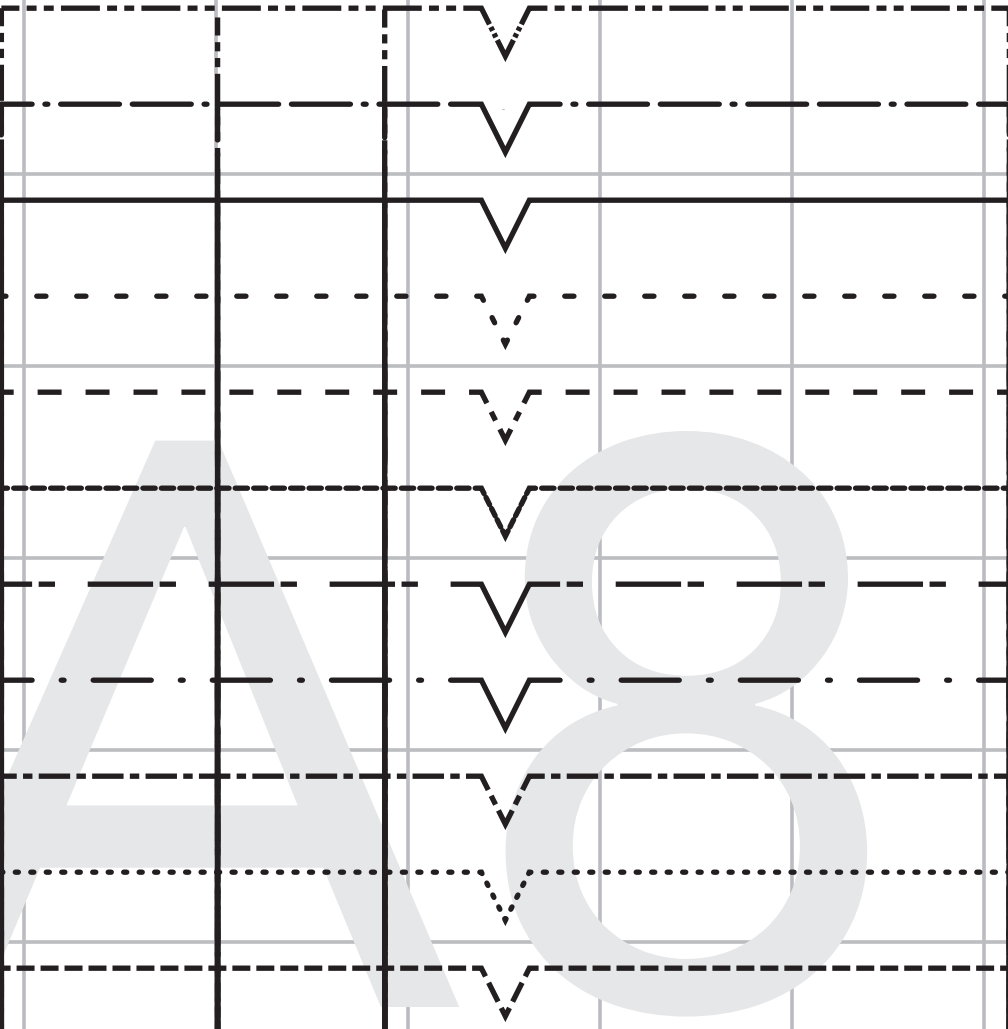
US 14 / UK 18

US 12 / UK 16

CUT AT DIAG  
FOR VIEW



ABO



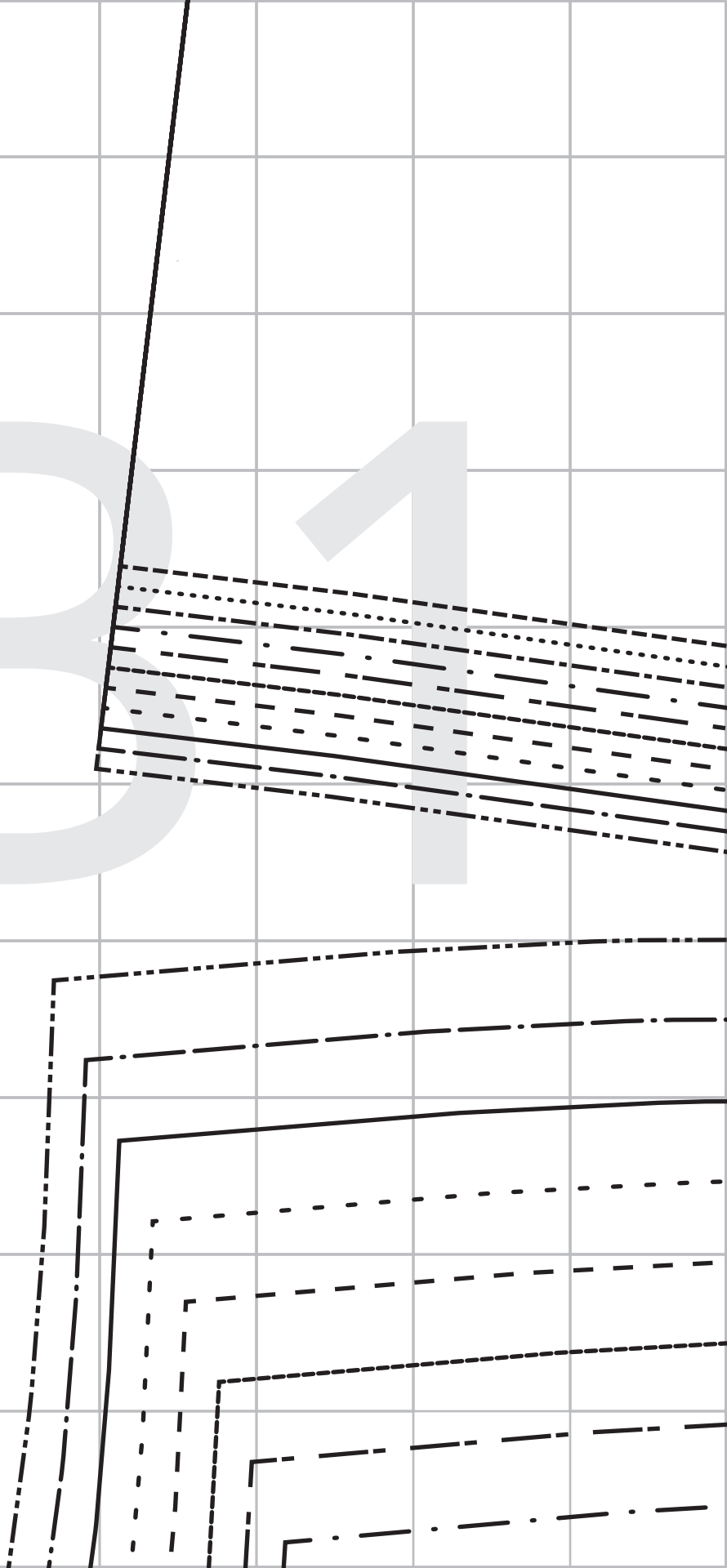
MARK FOR TOPSTITCHING

MARK FOR TOPSTITCHING

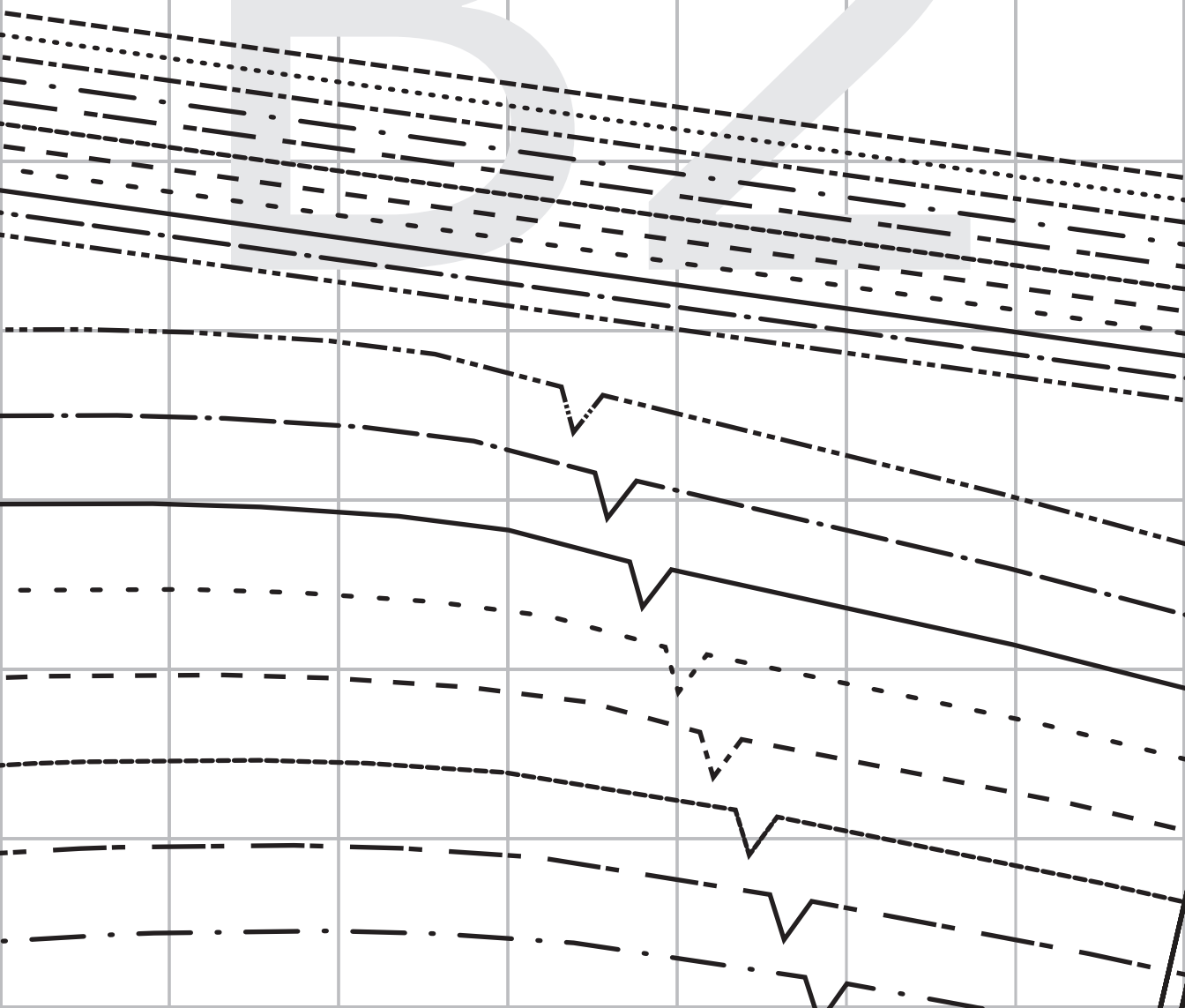
Ar  
Can

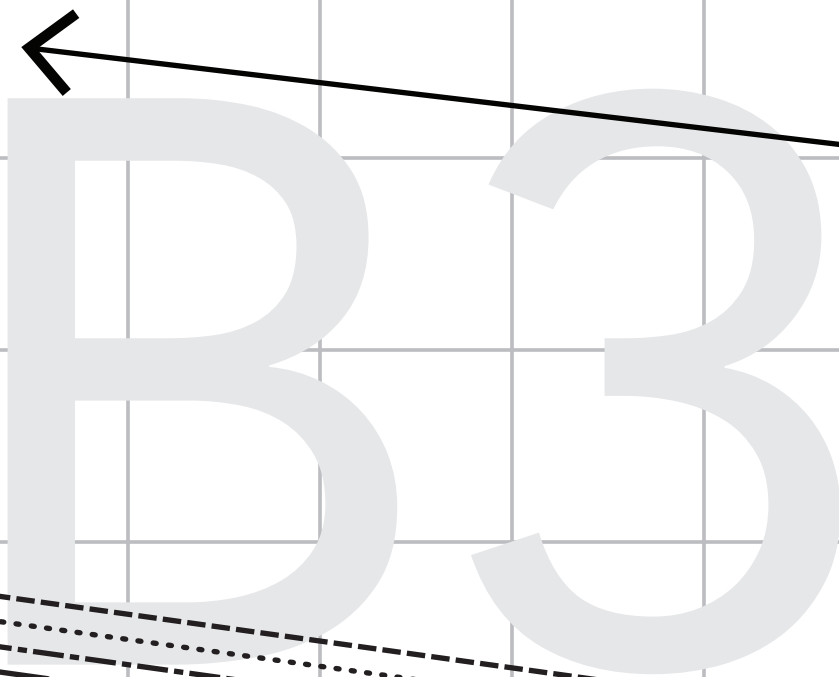


BE



# B2





B3

US 32 / UK 36

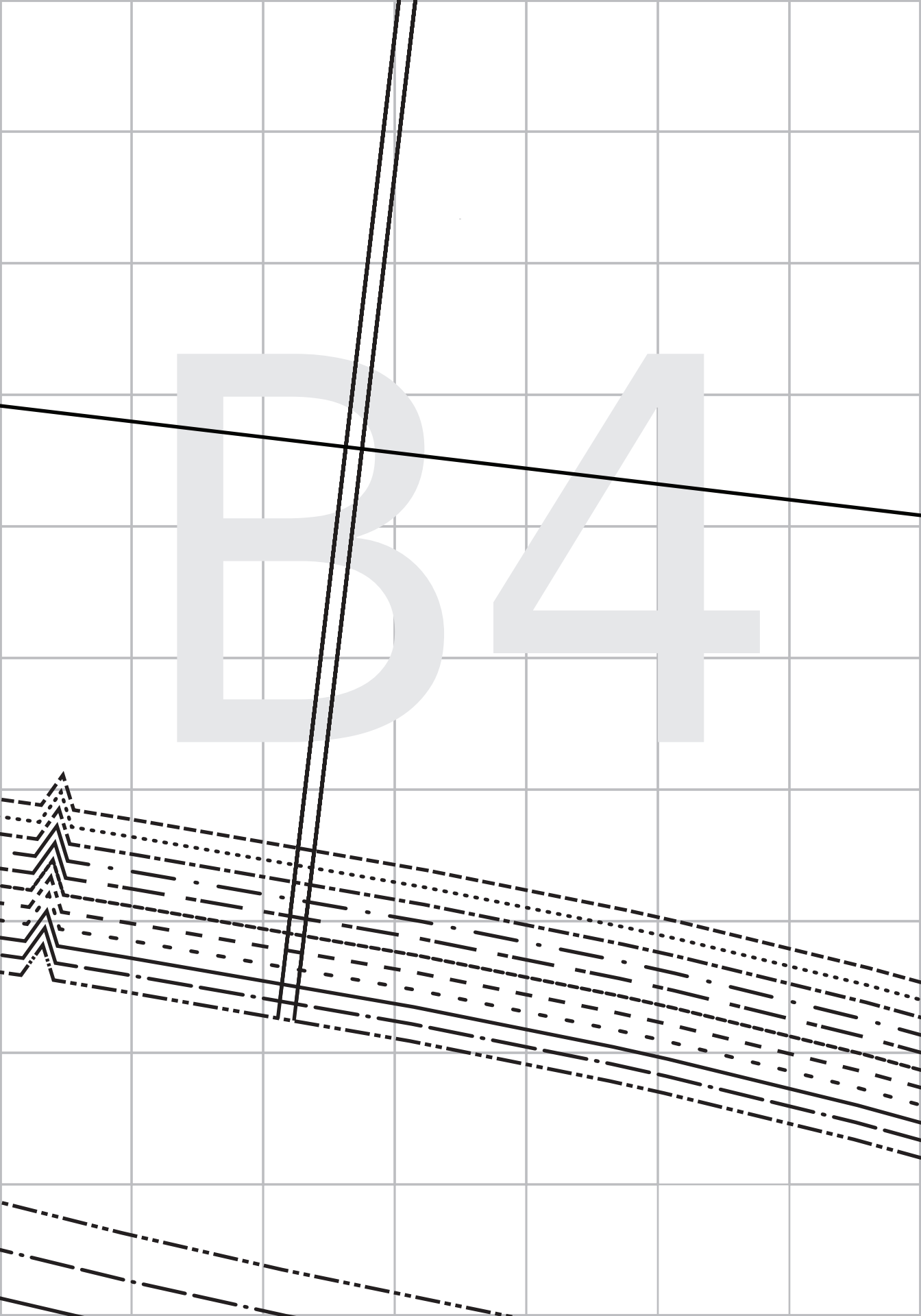
US 30 / UK 34

US 28 / UK 32

US 26 / UK 30

US 24 / UK 28

B4



*Shmerville*<sup>TM</sup>

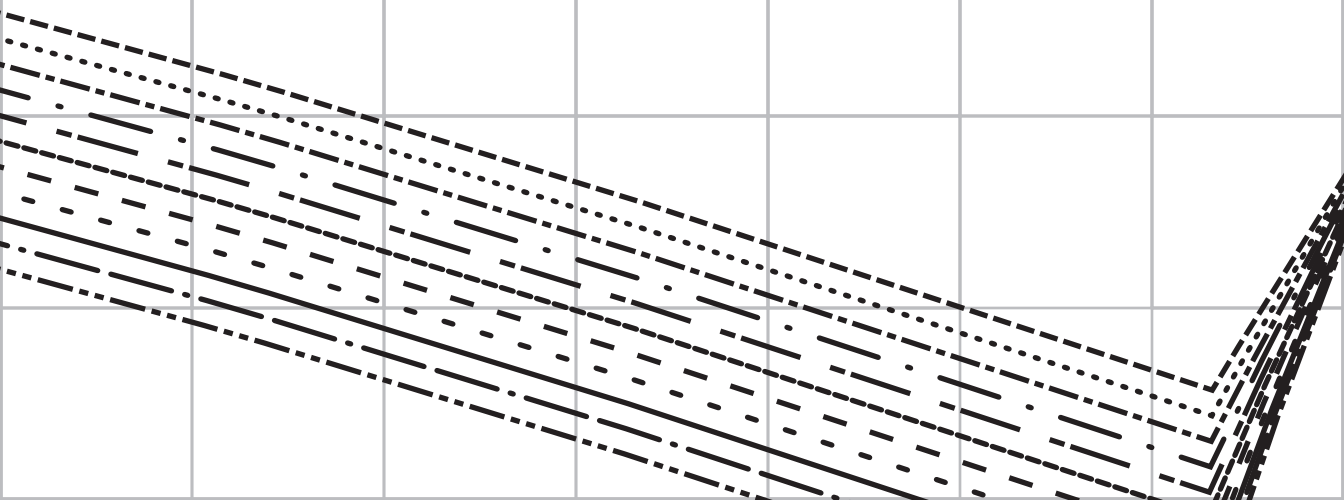
# Slaley Pants

FRONT LEG  
Cut 2 fabric

ALL VIEWS

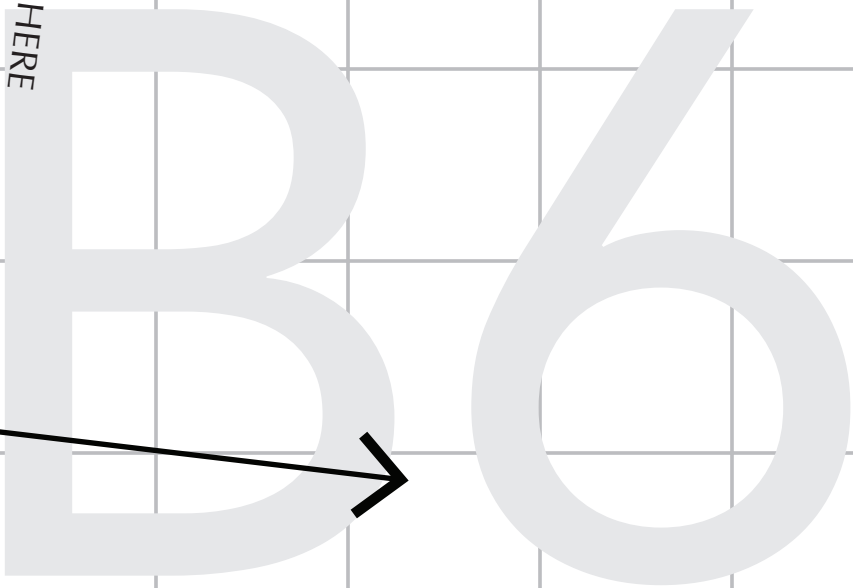
12 mm Allowance:  
12 mm included

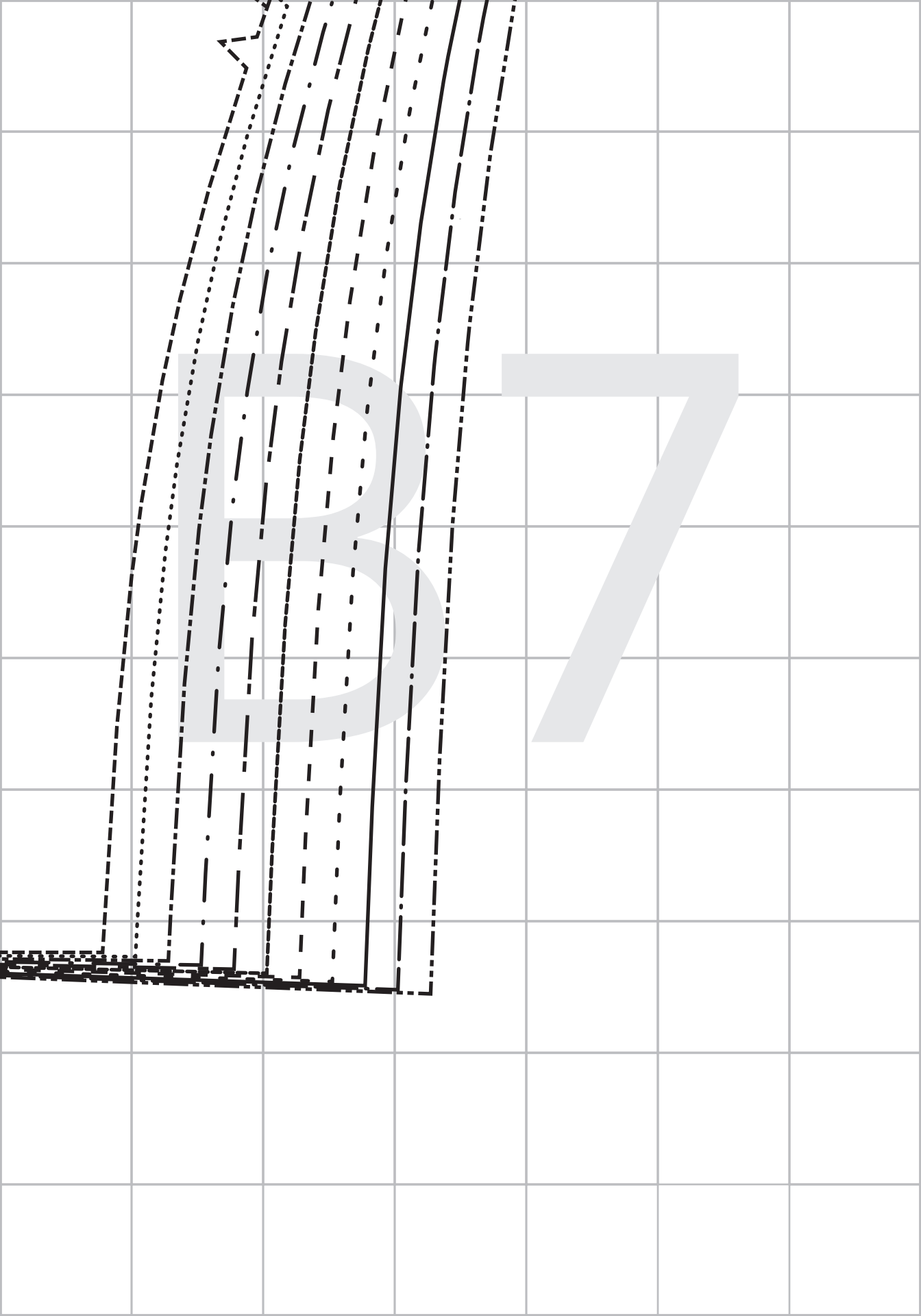
BS



ONAL LINE  
EW A

LENGTHEN/SHORTEN RISE HERE





*Shmerville*™

# Jeans Pants

**5** WAISTBAND  
Cut: 2 fabric

ALL VIEWS

Seam Allowance:  
1/2" / 12 mm included

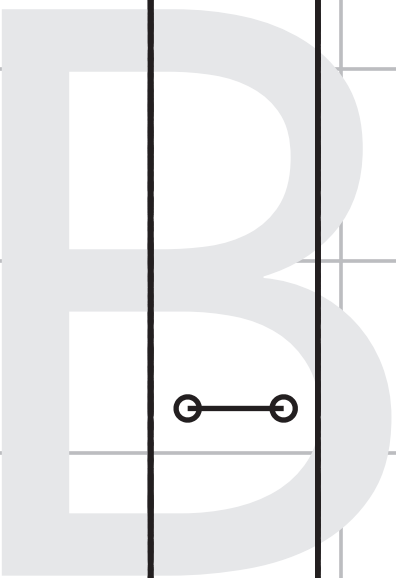


ON BOTH WAISTBANDS

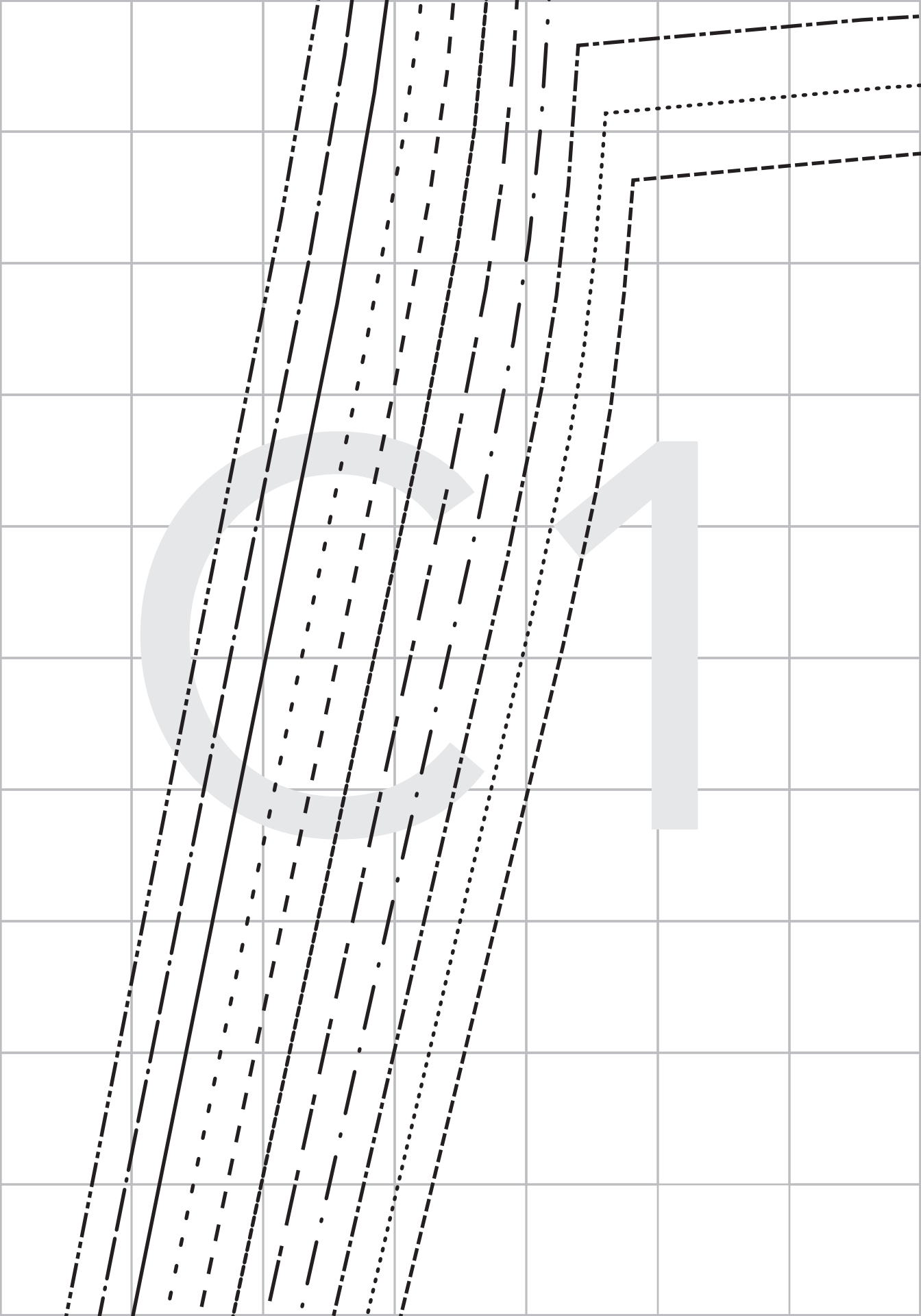


MARK FOR VIEW A  
FRONT WAISTBAND

ON BOTH WAISTBANDS

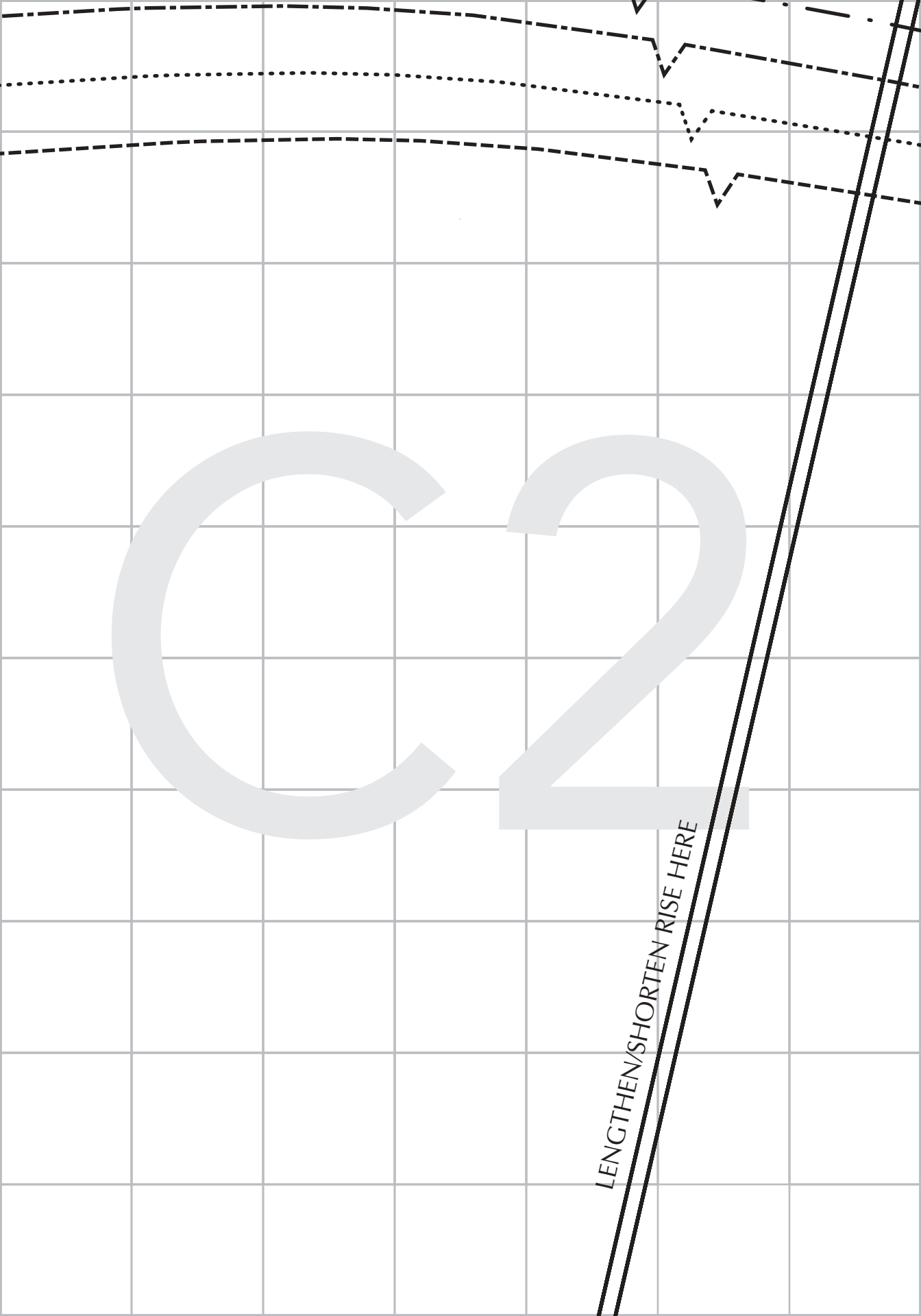






C2

LENGTHEN/SHORTEN RISE HERE



US 22 / UK 26

US 20 / UK 24

US 18 / UK 22

US 16 / UK 20

US 14 / UK 18

US 12 / UK 16

C3

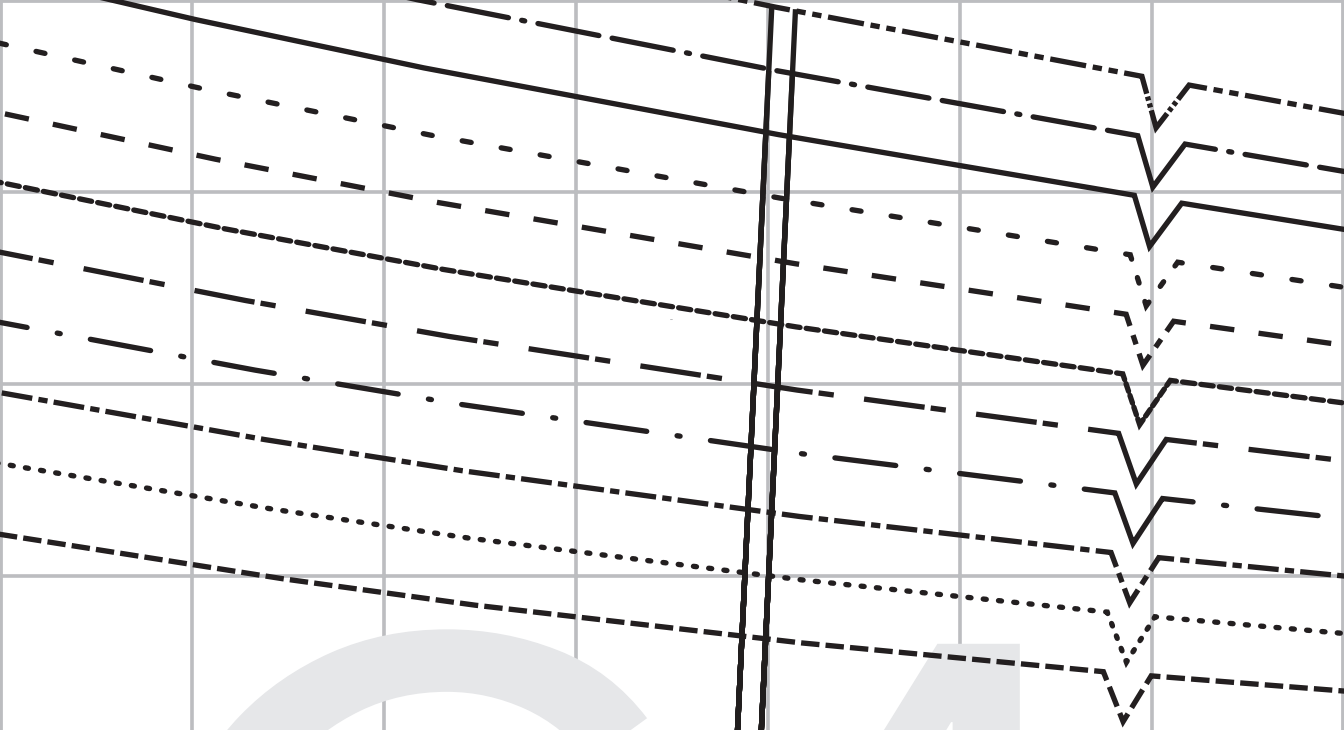
*Cashmerette*<sup>TM</sup>

# Ardley Pants

**4** BACK LEG  
Cut 2 fabric

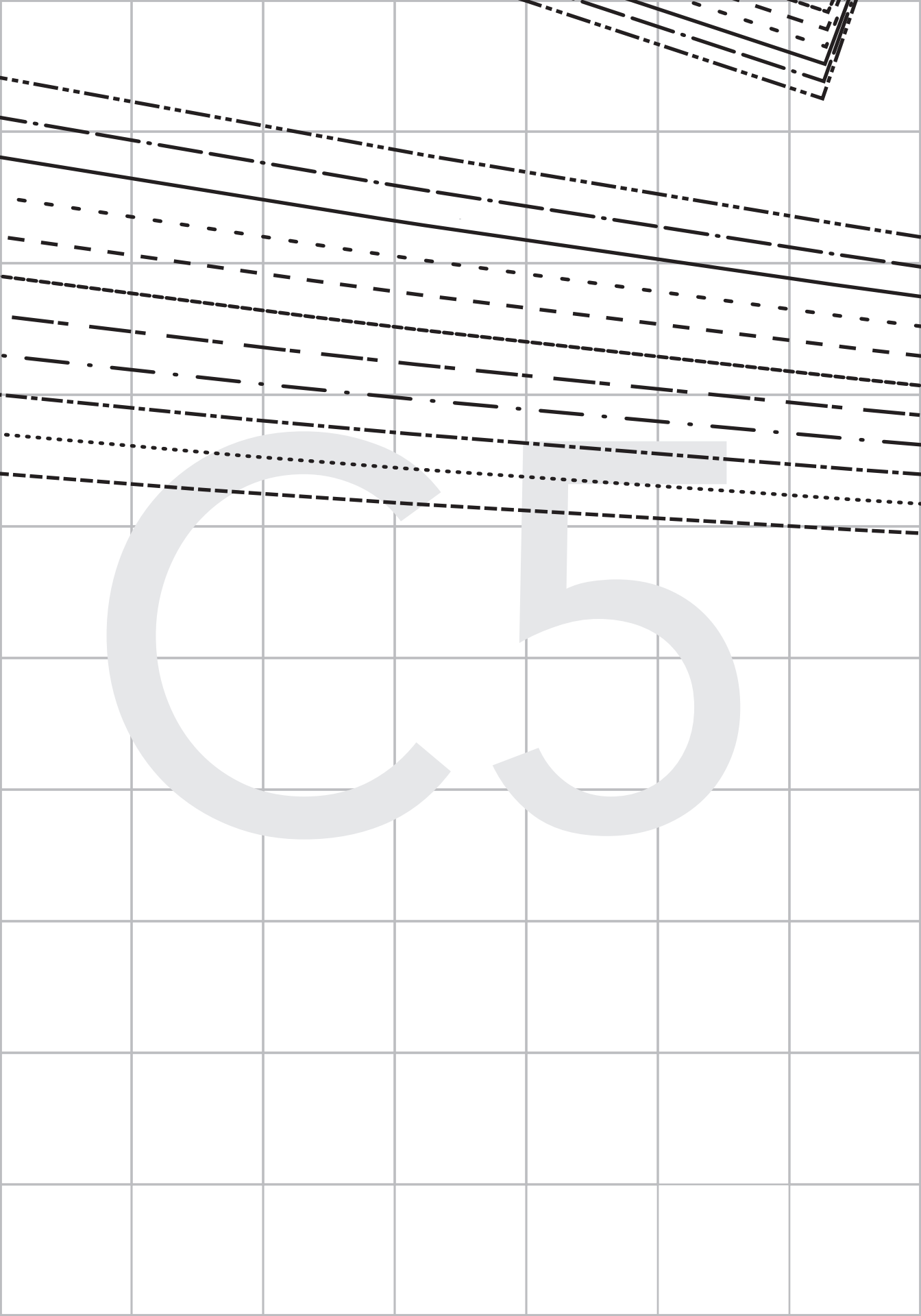
ALL VIEWS

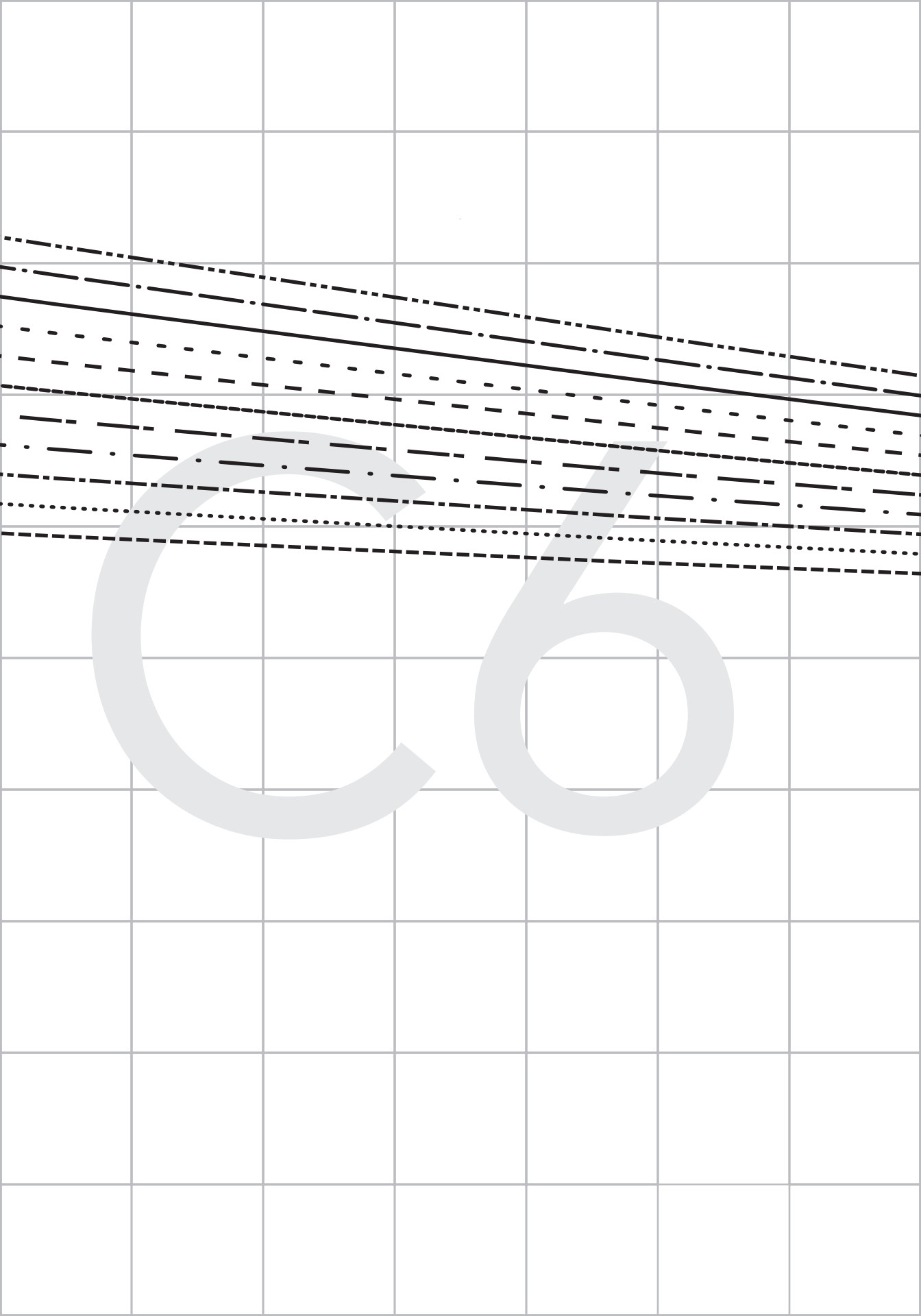
Seam Allowance:  
1/2" / 12 mm included

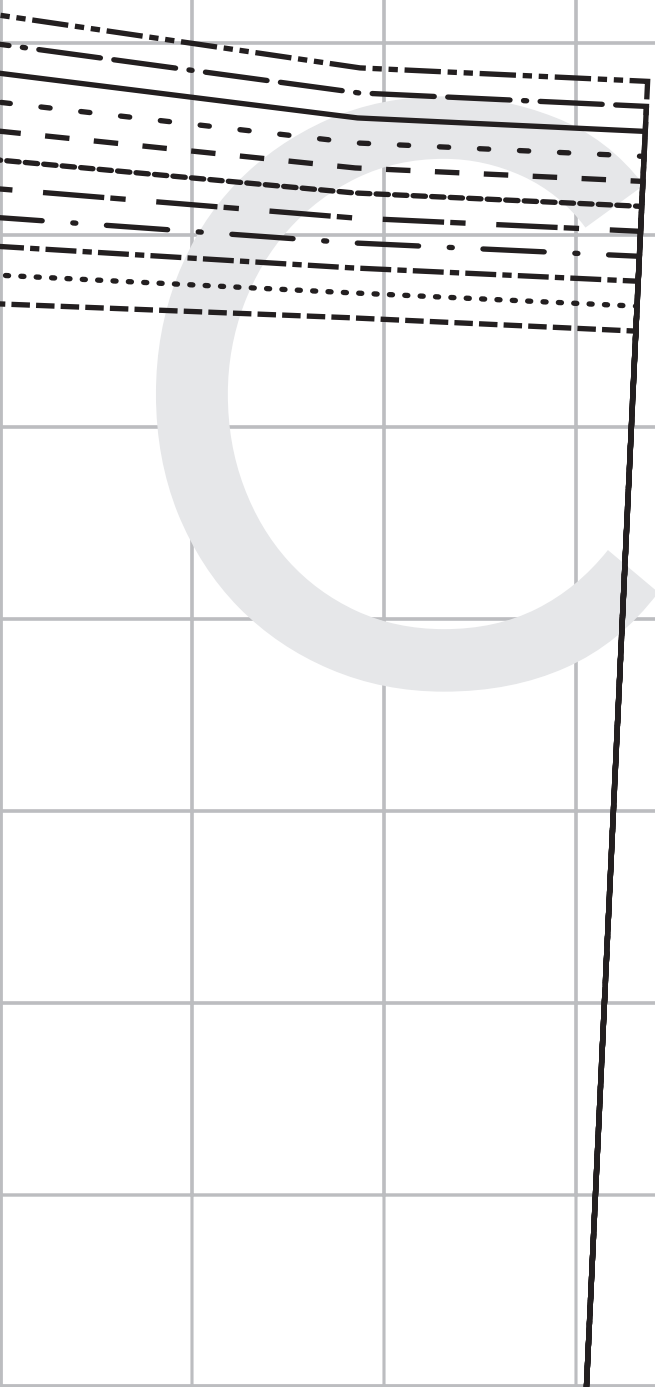


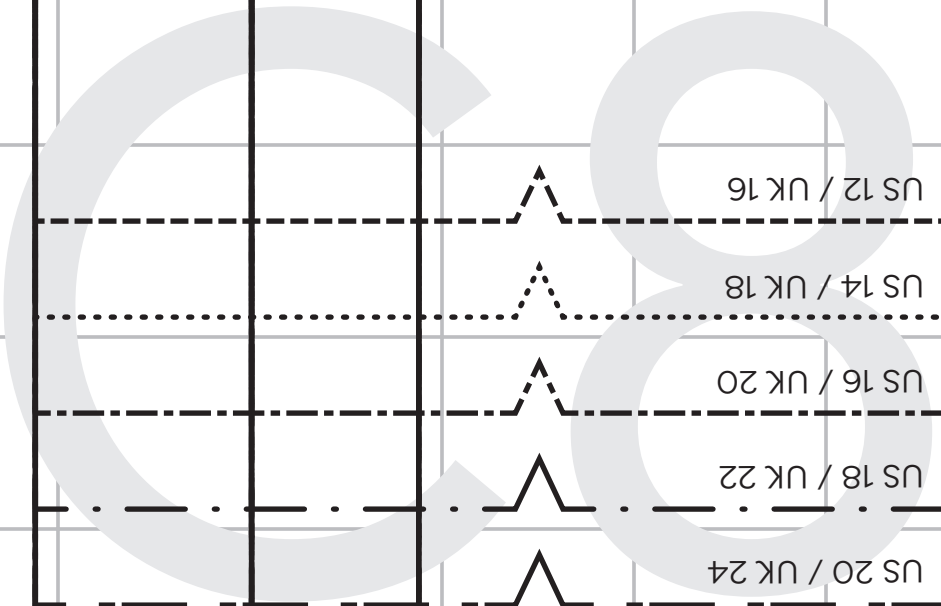
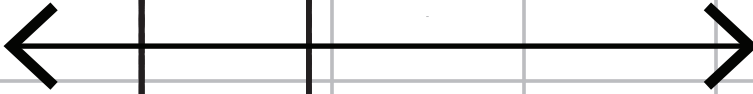
C4

THEN/SHORTEN LEG HERE









US 12 / UK 16

US 14 / UK 18

US 16 / UK 20

US 18 / UK 22

US 20 / UK 24

US 22 / UK 26

US 24 / UK 28

US 26 / UK 30

US 28 / UK 32

US 30 / UK 34

US 32 / UK 36



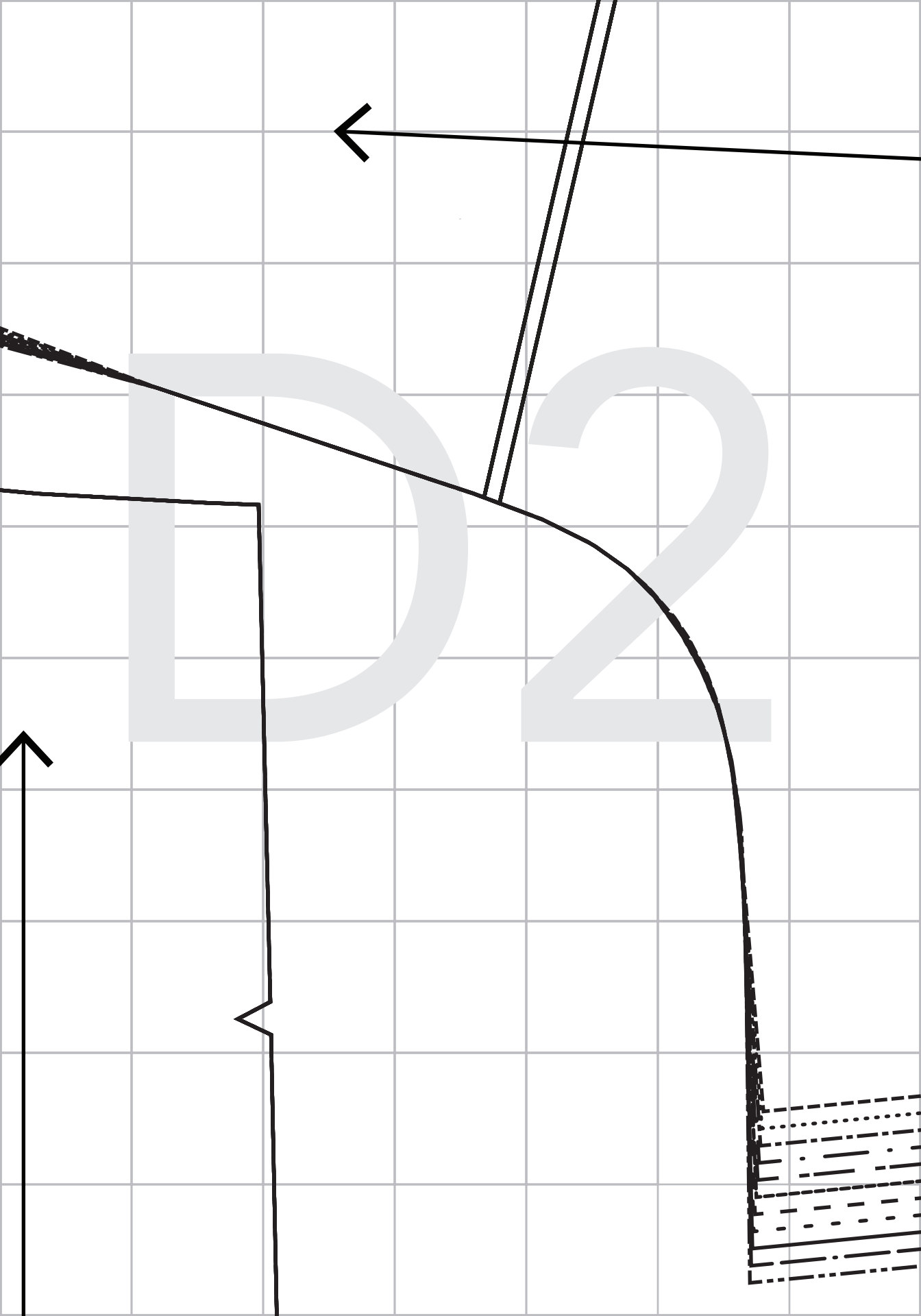
DM1

Cashmerette<sup>TM</sup>  
**Ardley Pants**

**2** POCKET FACING  
Cut 2 fabric

VIEW A

Seam Allowance:  
1/2" / 12 mm included

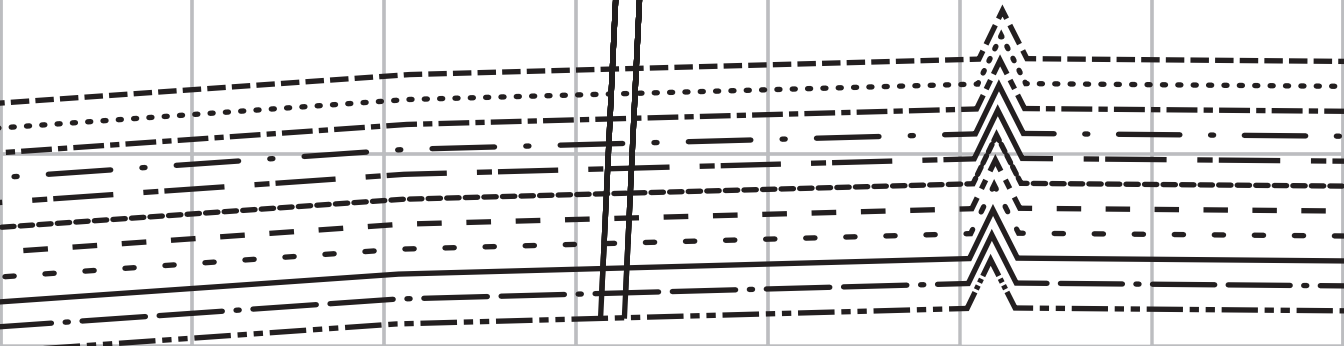




D3

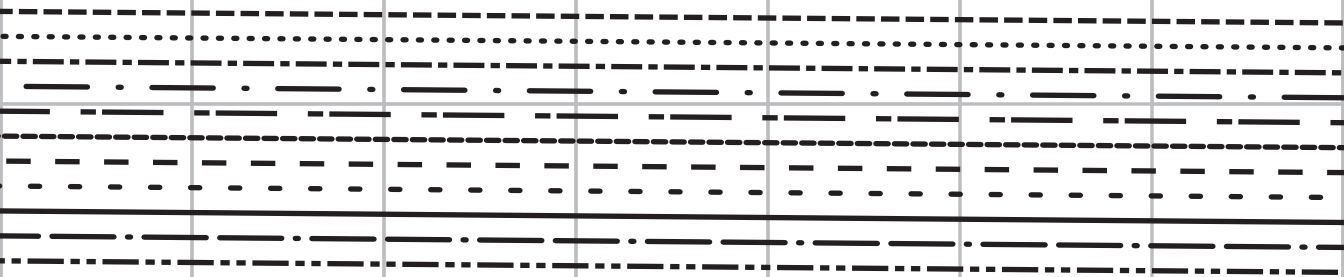
LENGTH

D4

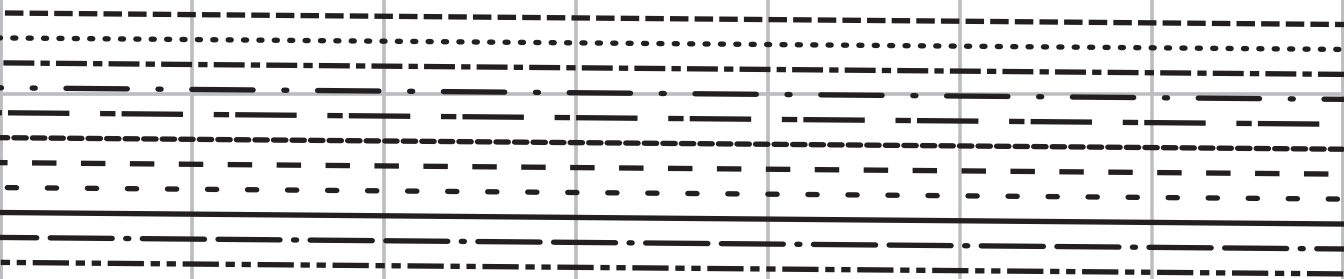




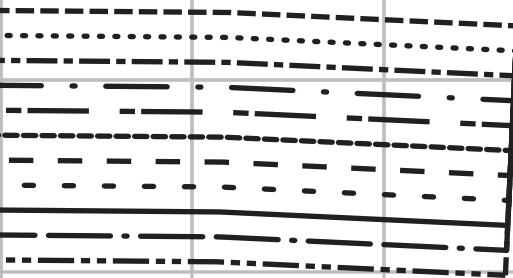
D5



Dó

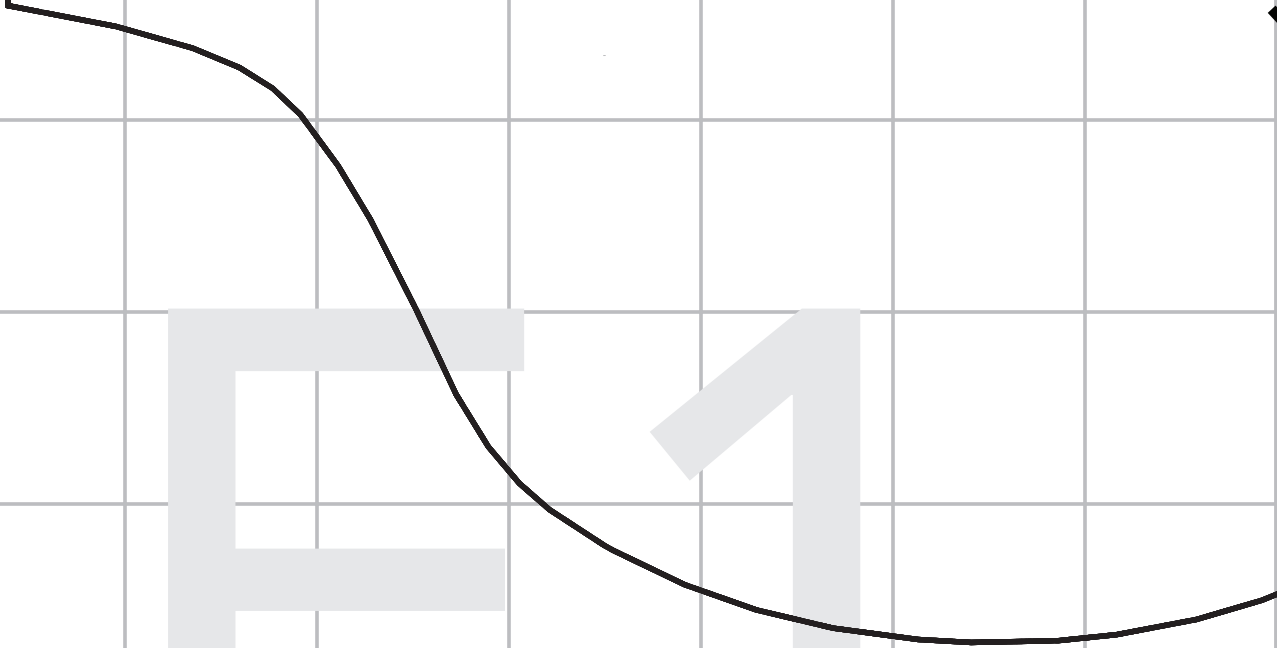


D7

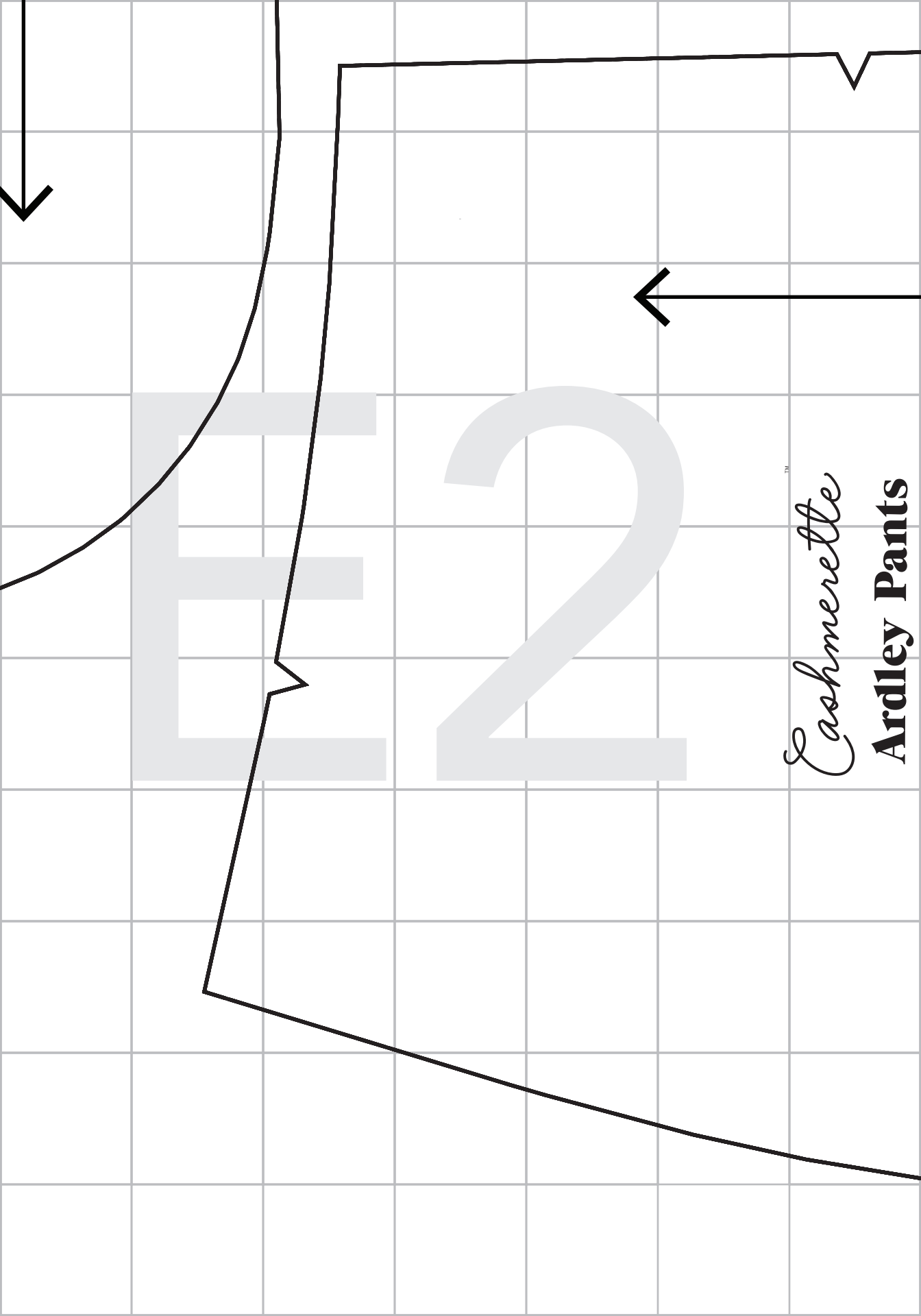


E

1







FREE

*Cashmerette*  
**Ardley Pants**

