

FOUNDATION PAPER PIECING
PROJECT

WINTER'S LANE

Evoking memories of chocolate-box villages blanketed in snow, roaring fires and warm winter woollens, Lynne Goldsworthy's cosy Christmas design is a festive showstopper!

Designed and made by **LYNNE GOLDSWORTHY**





BEHIND THE QUILT

STARRY NIGHT

“This project uses one quite simple foundation paper pieced template to create primary and secondary designs of stars and hexagons. Although there are a lot of templates to piece, the fabrics used in the templates will all be pre-cut to size, making the process much quicker and more streamlined.” – **Lynne Goldsworthy**

You will need

- Six (6) pale blue prints – One (1) fat quarter of each print
- Blue/cream print – 20in x WOF
- Four (4) brown prints – ½yd of each print
- Brown/cream print – ⅔yd
- Three (3) red prints – ¾yd of each print
- Cream branches print (blue) – 1yd
- Cream branches print (brown) – 1yd
- Cream background print – 1¼yds
- Red check for borders – 1yd
- Red branches (for cornerstones) – One (1) fat quarter
- Backing fabric – 4¾yds
- Binding fabric – 20in x WOF
- Batting – 86in square

- One-hundred (100) A and one-hundred (100) B templates (see Templates at end of project)

Fabric used

- Approx. 78in square

Fabric used

- “Return to Winter’s Lane” by Kate and Birdie Paper Co. for Moda Fabrics www.unitednotions.com
- Batting – 279 Cotton Mix 80-20 available from www.ladysewandsew.co.uk
- Aurifil 50wt for piecing and 40wt for quilting from www.aurifil.com

Notes

- Seam allowances are ¼in, unless otherwise noted.
- Press after each seam and press open, unless otherwise instructed.
- Press all fabrics well before cutting.
- WOF = width of fabric, assume a WOF of 42in.
- WOFQ = width of fat quarter, assume a WOF of 21in.
- FPP = foundation paper piecing.
- We cut our foundation pieces with a generous margin of error – more experienced foundation piecers may prefer to cut smaller pieces.

Cutting out

1 From the pale blue fat quarters, cut as follows:

- Twenty (20) $2\frac{1}{2}$ in x WOFQ strips. Sub-cut into one hundred (100) $2\frac{1}{2}$ in 45-degree diamonds for section 1 on the A templates.
- Seventeen (17) 3in x WOFQ strips. Sub-cut into one hundred (100) 3in x $3\frac{1}{2}$ in rectangles for section 7 of the A templates.

2 From the blue/cream print, cut five (5) 4in x WOF strips. Cut into fifty (50) 4in squares. Cut each in half on the diagonal once to make one-hundred (100) triangles for section 5 of the A templates.

3 From the brown fabrics, cut as follows:

- Ten (10) $2\frac{1}{2}$ in x WOF strips. Sub-cut into one hundred (100) $2\frac{1}{2}$ in 45-degree diamonds for section 1 of the B templates.
- Nine (9) 3in x WOF strips. Sub-cut into one hundred (100) 3in x $3\frac{1}{2}$ in rectangles for section 7 of the B templates.

4 From the brown/cream print, cut five (5) 4in x WOF strips. Sub-cut into fifty (50) 4in squares. Cut each in half on the diagonal once to make one-hundred (100) triangles for section 5 of the B templates.

5 From the red prints, cut twenty (20) $3\frac{1}{2}$ in x WOF strips and cut into two hundred (200) $3\frac{1}{2}$ in x 4in rectangles for section 4 of the templates.



6 From the cream and blue branches print, cut as follows:

- Four (4) 3in x WOF strips, subcut into fifty (50) 3in squares. Cut each square in half on the diagonal once to make one-hundred (100) triangles for sections 2 of the A templates.
- Five (5) $3\frac{1}{2}$ in x WOF strips, subcut into fifty (50) $3\frac{1}{2}$ in squares. Cut each square in half on the diagonal once to make one-hundred (100) triangles for sections 3 of the A templates.

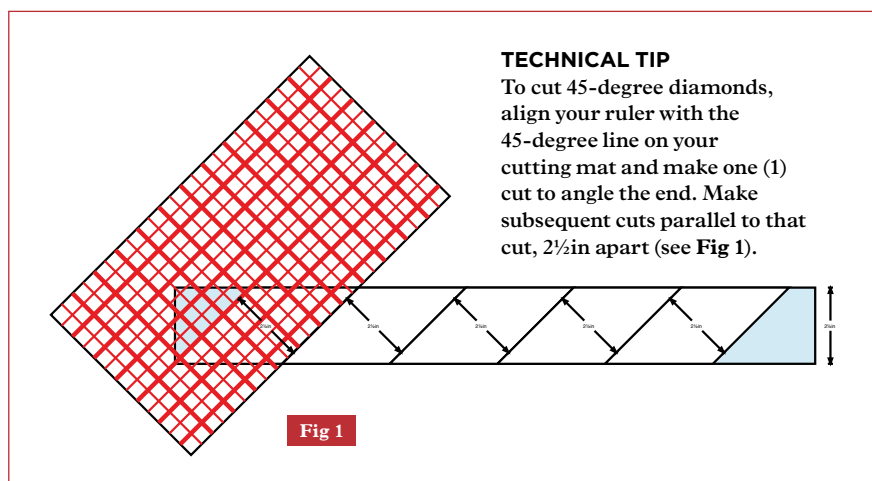
7 From the cream and brown branches print, cut as follows:

- Four (4) 3in x WOF strips, subcut into fifty (50) 3in squares. Cut each square half on the diagonal once to make one-hundred (100) triangles for sections 2 of the B templates.
- Five (5) $3\frac{1}{2}$ in x WOF strips subcut into fifty (50) $3\frac{1}{2}$ in squares. Cut each square in half on the diagonal once to make one-hundred (100) triangles for sections 3 of the B templates.

8 From the cream background print, cut as follows:

- Seventeen (17) $1\frac{3}{4}$ in x WOF strips. Cut into two hundred (200) $1\frac{3}{4}$ in x $3\frac{1}{2}$ in rectangles for section 6 on the templates.
- Seven (7) $1\frac{1}{2}$ in x WOF strips. Sub-cut four (4) $5\frac{1}{2}$ in lengths, then sew the remainder end-to-end. Cut into two (2) $60\frac{1}{2}$ in lengths and two (2) $72\frac{1}{2}$ in lengths.

9 From the red check fabric, cut six (6) $5\frac{1}{2}$ in x WOF strips. Sew end-to-end and sub-cut into four (4) $60\frac{1}{2}$ in lengths.





10 From the red branches fabric, cut four (4) 5½in cornerstone squares.

11 Cut the backing fabric into two (2) equal lengths and the binding fabric into eight (8) 2½in x WOF strips.

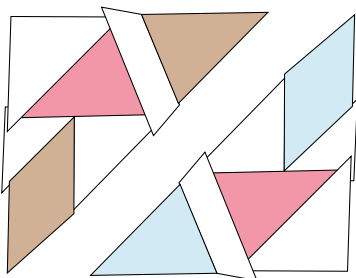


Fig 2

Making the quilt

12 Foundation paper piece all of the templates using the fabrics listed in the cutting directions. The templates indicate where the blue, brown and red fabrics are placed. Lynne used the blue/cream and blue

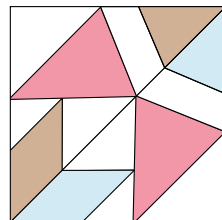


Fig 3

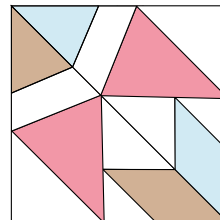
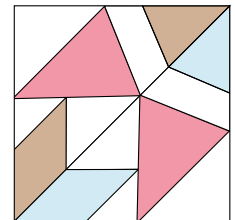


Fig 4



branches prints on the A templates and the brown/cream and brown branches prints on the B templates (Fig 2).

13 Trim to the dashed lines on the templates and carefully remove the papers from the back.

14 Sew the triangles into pairs along the diagonal lines (Fig 3). Press the seams open for a flatter finish. Sew the pairs together to make two (2) halves of each block. Ensure brown and blue fabrics alternate (Fig 4).

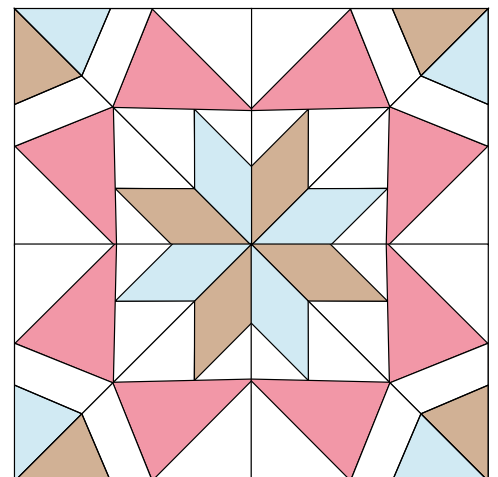


Fig 5

15 Sew the two (2) halves of each block together to finish the twenty-five (25) blocks (**Fig 5**). Blocks should measure $12\frac{1}{2}$ in square.

16 Sew the blocks together into five (5) rows of five (5). Sew the rows together to finish the centre of the quilt top.

17 Sew the $1\frac{1}{2}$ in x $60\frac{1}{2}$ in cream background strips to either side of the quilt top.

18 Sew the $5\frac{1}{2}$ in x $60\frac{1}{2}$ in red check strips to the two (2) sides of the quilt top, (**Fig 6**).

19 Sew the $1\frac{1}{2}$ in x $72\frac{1}{2}$ in cream background strips to the top and bottom of the quilt top.

20 Sew the $1\frac{1}{2}$ in x $5\frac{1}{2}$ in cream background strips to the ends of two (2) $5\frac{1}{2}$ in x $60\frac{1}{2}$ in red check strips, then sew $5\frac{1}{2}$ in red branches cornerstones to the ends of those strips (**Fig 7**).


21 Sew these strips to the top and bottom of the quilt top to finish.

Quilting and finishing

22 Sew the two (2) pieces of backing fabric together along the long sides using a $\frac{1}{2}$ in seam. Press the seam open.

23 Make a quilt sandwich basting together the backing, batting and quilt top.

24 Quilt as desired. Lynne quilted a diagonal cross-hatch of lines approx. 2in apart using a cream Aurifil 40wt thread.

25 Sew the binding strips end-to-end using diagonal or straight seams as preferred. Fold and press in half, wrong sides together, along the length. Bind the quilt, taking care to mitre corners. 

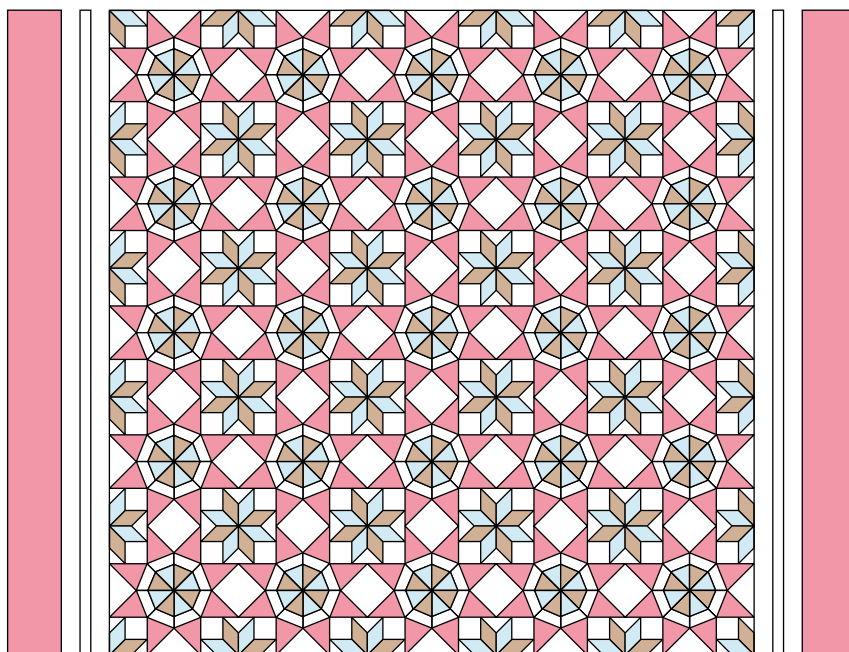


Fig 6

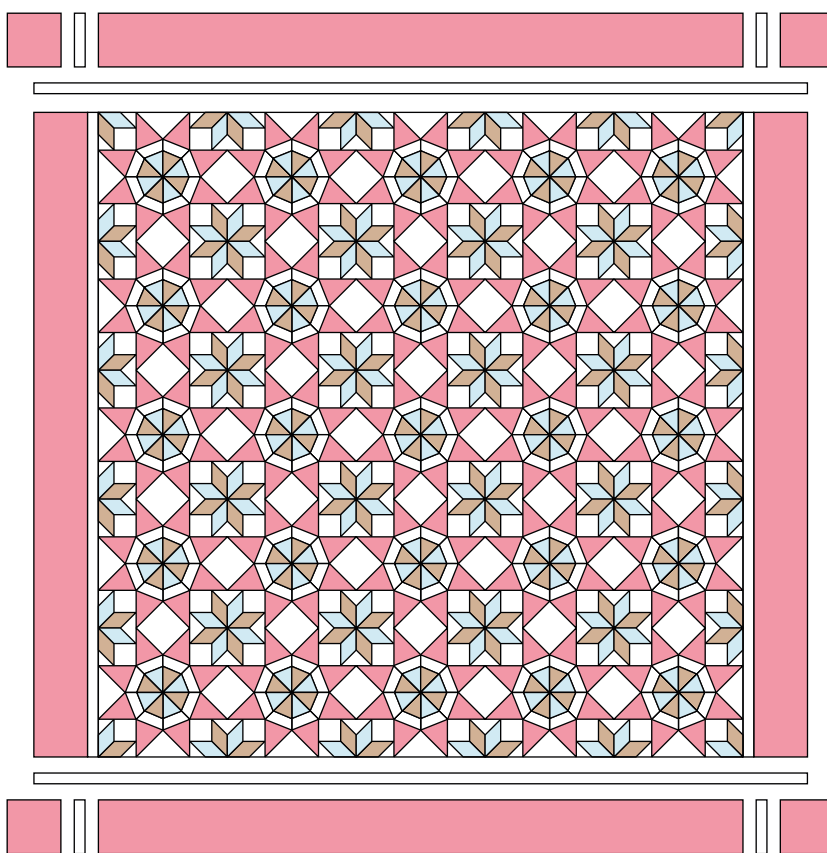


Fig 7



Meet the designer

Lynne Goldworthy from Lily's Quilts is a modern British quilter. She has been sewing since she was a young child and, on a business trip to America, she fell in love with American quilts and tried her hand at the craft. Then life and family happened and she didn't pick up another quilt for a few years, until she discovered Flickr, blogs and online shopping. She immediately ordered some pre-cuts, started her own blog and has never looked back.

www.lilysquilts.blogspot.co.uk [lilysquilts](https://www.instagram.com/lilysquilts) [@lilysquilts](https://www.facebook.com/lilysquilts)

Select your favourite festive fabrics for this showstopping quilt – it will be the pièce de résistance for your Christmas decorations!

WINTER'S LANE

FOUNDATION PAPER PIECING TEMPLATES



ACTUAL SIZE

Includes seam allowances

