

# Viki

S E W S

#VIKISEWS



*hoodie*

## LINDSEY

Size  
34-52

Skill level



«Intermediate»

**30% off**  
**all patterns**  
on [vikisews.com](https://vikisews.com)

use promo code  
**patterns30**



**Partially interface the following pieces:**

- Outer collar edges (1.5cm wide strip of interfacing)
- Back neckline edge (1cm wide strip of interfacing, 6cm long)
- Zipper area on the front piece (4cm wide strip of interfacing, 12cm long)
- Grown on pocket facings (4cm wide strip of interfacing, length according to pattern piece)
- Corners where yoke is attached on the back piece (1.5 x 1.5cm squares of interfacing)

Cut interfacing pieces on the grainline.

Prior to interfacing the garment pieces, we recommend testing the interfacing and/or seam tape interfacing on a scrap piece of the main fabric. Also check your iron settings: what temperature suits your fabric, can the interfacing be applied with steam, as well as the time needed to hold the iron over the interfacing for perfect adhesion.

To interface, put the gluey side of the interfacing (the side that feels rough to the touch) on top of the wrong side of the fabric piece (or a section thereof) and press with the iron. Do not iron the piece, but instead press it section by section, holding it down with the iron a few seconds until that section is adhered and then pressing down the next section. You may use a cotton pressing cloth to protect your iron sole. Once the interfacing process complete, leave the piece on a hard flat surface for 15 minutes for it to cool down.

**First fitting**

We recommend doing a first fitting for any garment.

**For what purpose?** The first fitting is done with the goal of checking the balance of the garment (this is how a garment hangs on the body; the vertical seams should be straight and perpendicular to the floor, and the horizontal seams should be straight and parallel to the floor), correction of volumes (only to reduce the volume and in case you didn't make a muslin and didn't make any pattern modifications prior to cutting fabric), correction of garment and sleeve length, checking of the neckline depth and shape.

**How?** After applying fusible and seam tape interfacings, we recommend basting the garment (including sleeves) along the main construction seams (shoulder seams, sides, princess seams), baste the yoke. Sew on the collar and baste the zipper. Baste the cuff to the sleeve and the waistband to the bottom of the garment.

To ensure a well-fitting garment, it's important to properly assemble it for the first fitting, so pay attention to the notches during construction. When you pin pieces together, pin first at the notches, then at the ends and between the notches, making sure the fabric is laying smoothly.

To baste the garment, use either a long straight machine stitch (stitch length 4-5mm) or baste by hand (stitch length approximately 1cm).

**Important!** In situations where the needle leaves marks in the fabric (leather, suede, nylon, silk, etc.), in order to check the fit and evaluate possible issues, we recommend making a muslin first! In this case, you won't need to do fittings, simply try on the assembled muslin to evaluate the length of garment. We recommend testing on a scrap piece of fabric first to see whether your material is prone to be marked by needles.

During basting, if it so happens that one piece is longer than the other, don't rush to true them by cutting the excess or stretching the shorter piece. First make sure that the notches are properly matched, lay the pieces on a flat surface and try to re-baste the pieces together. If the pieces still don't match in length, for example if one stretched or if there was a mistake during cutting, then the truing can be done after the first fitting, during construction of the garment.

After assembly, seams should be lightly pressed flat, then pressed to one side or pressed open.

#### **What to look for during fitting?**

The left and right sides of the garment should look the same.

Verify the balance of the garment – the side seams should be vertical, the shoulder seam should lie on the natural slope of the shoulder.

Since the hem is curved, verify the lines against the pattern pieces.

Evaluate the side view of the front and back of the garment (look at yourself sideways in the mirror). The front and back should not sag or be pulled up. The back should not have any horizontal wrinkles nor any pulling across the shoulder blades, the shoulders and underneath the stand collar.

Evaluate the side seams from the front or back. The sides should not sag or pull up.

Check the fit of the sleeve. It must lie smoothly, without any draglines.

Check the length of the garment.

Verify the shape and the height of the stand collar. On the back, the collar should lay flush against the neck.

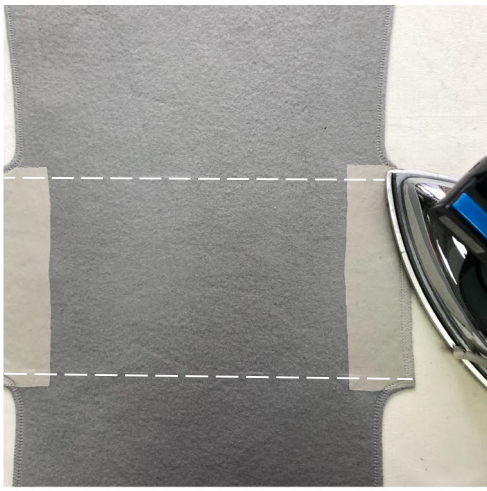
Check for fit issues associated with individual features of the body (for example an asymmetrical figure with uneven shoulders, etc.)

Check for garment volume, there should be enough volume and it should feel comfortable.

After the fitting, mark changes symmetrically to both sides of the garment; if needed, baste once more and try on again.



Overlock the princess seam edges on the side front pieces with the wrong side facing up. Press.



Overlock the princess seam edges on the front piece with the wrong side facing up. Press.

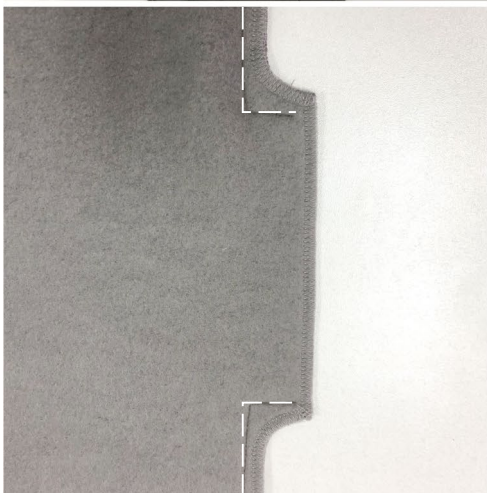
Mark and hand baste the topstitching lines on the front piece. Use light coloured hand basting thread, in order to avoid marking the fabric during pressing and steaming.



Stitch on the bottom topstitching line on the front piece. Stitch on the right side with a stitch length of 4mm. Backstitch at the beginning and end.



Place the front piece and the side front pieces right sides together along the princess seams. Align the edges, pin and baste.



Stitch the pieces on the sewing machine.

Stitch from the underarm up to the point of pocket opening, then perpendicularly towards to the edge of the grown on facing, stopping 1cm short of the edge. Backstitch at the beginning and end.

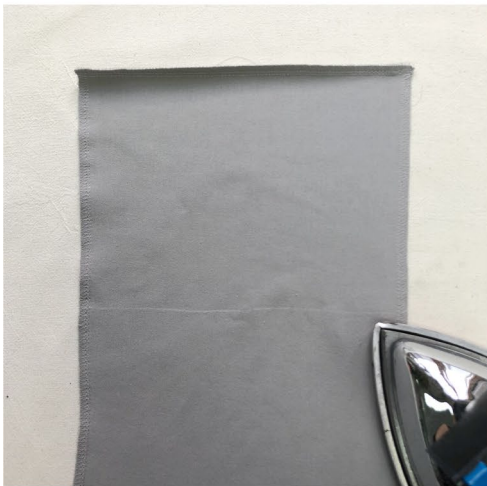
Next start stitching 1cm away from the grown on facing edge, stop at the pocket opening point and continue along the princess seam all the way to the bottom edge. Backstitch at the beginning and end.



Press the seams.



Press the seam allowances towards the front piece.



Overlock the pocket lining edges with the wrong side facing up. Press.



Place the pocket lining wrong sides together with the front piece. The top edge of the lining piece should be above the upper topstitching line.



Place the edge of the front piece grown on facing on top of the pocket lining edge. The facing edge should extend by 0.5cm beyond the seam allowance of the lining.

Pin the seam allowances, baste and stitch. Sew at 1cm from the facing edge. Backstitch at the beginning and end.



Press the seam.



Fold the lining piece along the foldline, place it on top of the grown on facing. Align the top edges.



Pin the lining edges to the edges of the side piece grown on facing. Baste and stitch. Stitch on the side of the facing. Backstitch at the beginning and end.



Press the seam.



Pin, baste and stitch the bottom part of the pocket lining.  
Backstitch at the beginning and end.



Press the seam.



Align the top edges of the lining, pin, baste and stitch.  
Backstitch at the beginning and end.



Pin and baste the top edge of the lining to the front piece at the topstitching line.



Topstitch the lining on the sewing machine. Stitch on the right side of the front piece between the princess seams, with a stitch length of 4mm. Backstitch at the beginning and end.



Press the seam.



Pin and baste the pocket openings along the fold on the front piece.





Topstitch the pocket openings at 0.8cm from the edge, with a stitch length of 4mm. Backstitch at the beginning and end.

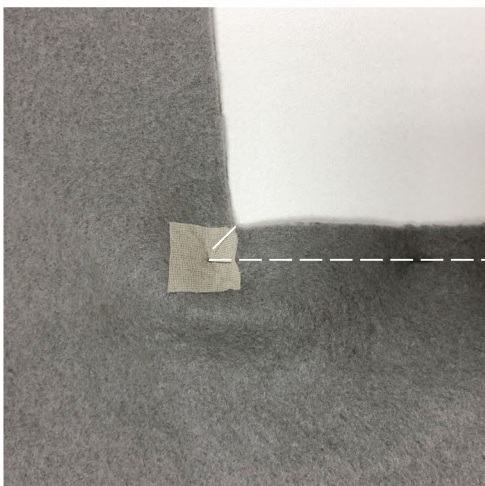


Press the topstitching.

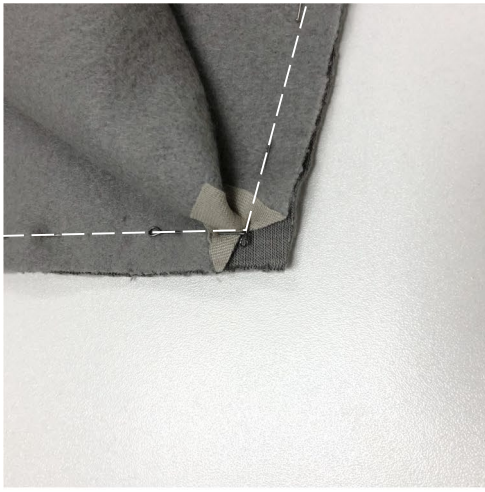


Place the back yoke bottom edge right sides together with the bottom edge of the back piece yoke insertion area. Align the edges, pin and baste.

Stitch, leaving 1cm from the yoke side edges unstitched.



Make a diagonal clip on the back piece corners, stopping 2mm short of the stitching line.



Align the yoke and back pieces along the side edges; open up the sides around the clipped corner to help them line up. Pin and baste.



Stitch the yoke to the back. Overlock the seam allowances with the yoke facing up.



Press.



Press the seam allowances towards the back piece.



Mark the cutting lines for the zipper on the wrong side of the front piece. Cut along the straight line; do not cut the diagonal lines.



Place the front and back pieces right sides together along the shoulder and side seams.

Align the shoulder edges, pin, baste, and stitch on the sewing machine. Backstitch at the beginning and end. Overlock the seam allowances with the back piece facing up.

Align the side seams, pin, baste, and stitch on the overlocker with a 7mm seam allowance. Serge with the back piece facing up and cutting off 3mm.



Press the shoulder seam.



Press the seam allowance towards the front.



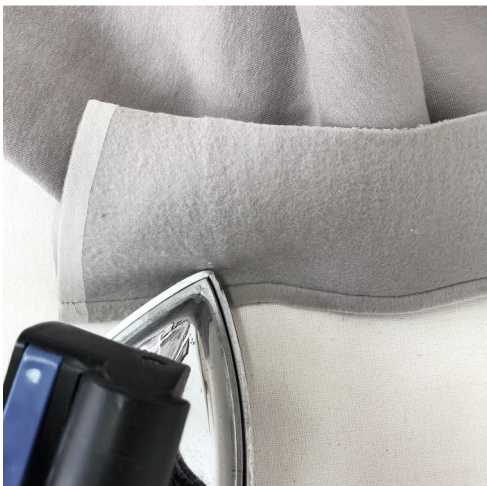
Press the side seam.



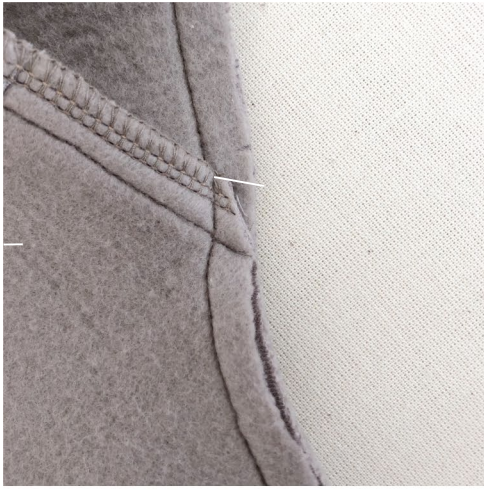
Press the seam allowance towards the front.



Place the bottom edge of the outer collar right sides together with the neckline edge. Align the edges, pin, baste, and stitch on the sewing machine.



Press the seam.



Make a clip into the front neckline seam allowance near the shoulder seam, stopping 2mm short of the stitching line.



Press the back neckline seam allowances towards the collar.



Press the front neckline seam allowances open up to the clips.



Carefully steam the zipper tape in order to avoid shrinkage once it's inserted in the garment.

Open the zip. Place one side of the zip to the right side of the front in such a way that the top stop is 1cm below the top edge of the collar. Pin. Mark a line with a chalk or a disappearing pen on the zipper tape at the level of the collar and bodice seam.



Close the zip. Mark a line on the opposite side of the zipper tape at the collar seam level.



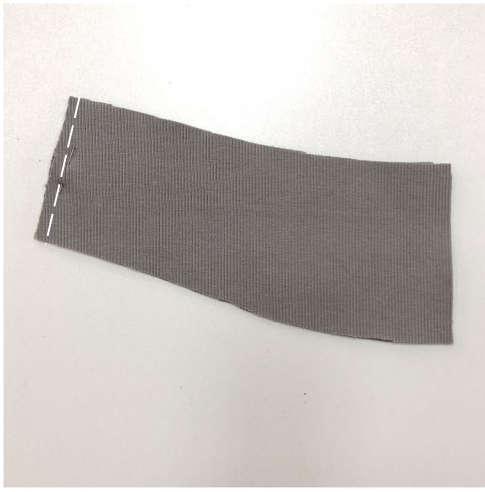
Pin the second side of the zip to the opening edge. Align the edges, match the marked lines. The top stops should be 1cm below the collar top edge.



Fold and pin the zipper top tape extensions.  
Baste and stitch the zipper on the sewing machine. Stitch at 7mm from the edge and stop at the bottom corner of the marked zipper frame. Backstitch at the beginning and end.



Press the seams.

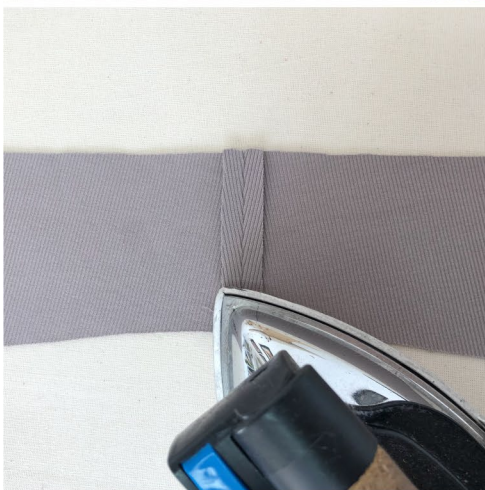


Place the inner collar pieces right sides together along the center edge.

Align the edges, pin, baste, and stitch on the sewing machine. Backstitch at the beginning and end.



Press the seam.



Press the seam allowances open.



Overlock the curved bottom edge of the front facing piece with the right side facing up. Press.



Press the front facing shoulder edges to the wrong side by 1cm.

Mark and cut along the straight cutting line on the front facing; do not cut the diagonal lines.



Place the inner collar and the front facing pieces right sides together along the neckline edge. Align the edges, pin, baste, and stitch on the sewing machine. Backstitch at the beginning and end.



Make sure to catch the pressed shoulder edge on the front facing piece in the stitching.



Clip into the front facing seam allowance, stopping 2mm short of the stitching line.





Press the seam.



Press the seam allowances open up to the clip.



Place the inner collar with the front facing piece right sides together with the front of the garment. Align the cut opening edges and the top edges of the outer and inner collar pieces.

Pin the cut opening edges of the front facing and inner collar piece to the opening edges of the front piece, baste, and stitch on the sewing machine. Stitch exactly on top of the zipper stitching line up to the bottom corner of the zipper frame. Backstitch at the beginning and end.

Cut along the diagonal lines on the bottom of the opening, stopping 1mm short of the stitching.



Align the top edges of the outer and inner collar pieces, pin, baste, and stitch on the sewing machine. Start and end stitching at the beginning of the zipper stitching lines. Backstitch at the beginning and end.



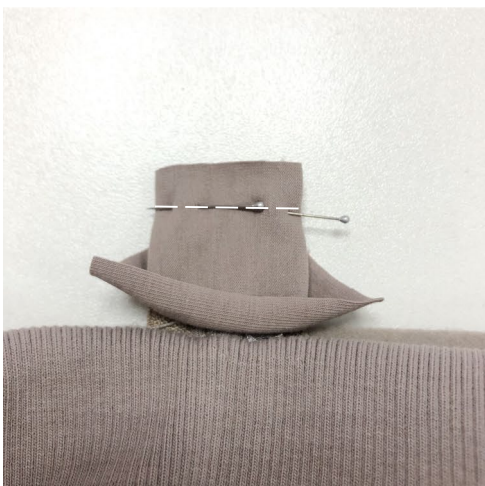
Trim the corners, but don't cut off the top of the zipper tape. Trim the outer and inner collar seam allowances down to 5mm.



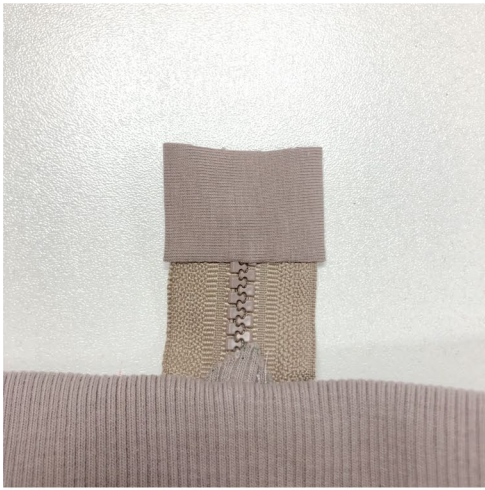
Trim the inner collar and front facing seam allowances down to 2mm.



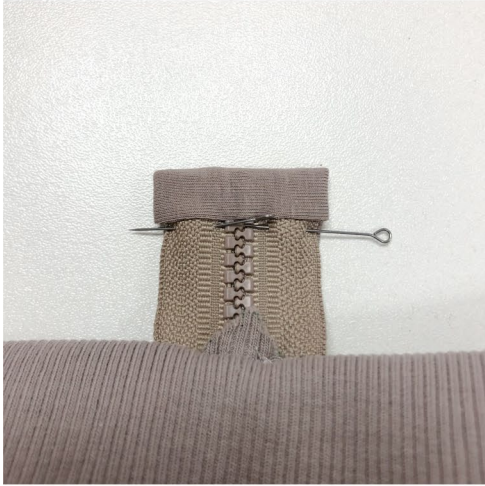
Pass the bottom edge of the zipper between the front and the front facing. Flip the triangle and hand stitch it to the zipper. Stitch on the sewing machine. Backstitch at the beginning and end. Turn the hand wheel manually when you reach the zipper teeth, to avoid breaking the needle.



Cut a 6x3cm rectangle out of jersey. Place the long edge of the rectangle right side down on the bottom edge of the zipper; fold both sides around the zip. Pin, baste, and stitch on the sewing machine. Backstitch at the beginning and end.



Turn the rectangle to the right side and press.



Fold the free edge of the rectangle over the zip end, pin, baste, and stitch.



Stitch right in the ditch of the first stitching line. Backstitch at the beginning and end. Press.



Press around the zip area on the right side.



Hand baste around the zip and along the top edge of the collar.



Pin together the seam allowances of the front neckline and the front facing, baste and stitch. Start stitching at the clip and stop 4cm short of the zipper insertion seam. Backstitch at the beginning and end.



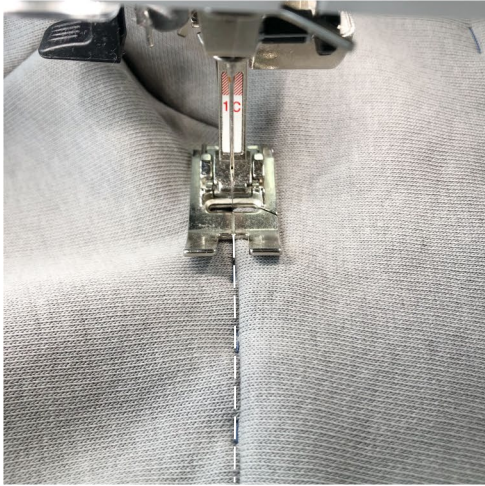
Pin and baste the folded front facing shoulder edge to the shoulder seam.



Stitch-in-the-ditch to attach the shoulder edge of the facing to the shoulder seam of the garment. Backstitch at the beginning and end.



Fold the bottom edge of the inner collar to the wrong side by 1cm. Pin and hand baste. Baste exactly on top of the seam where the collar is attached to the garment.



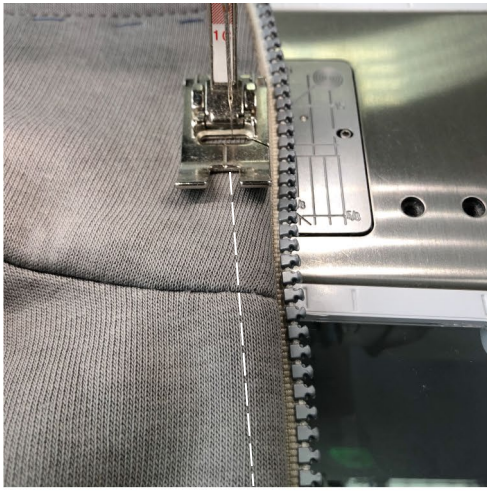
Stitch the inner collar bottom edge on the sewing machine. Stitch-in-the-ditch on the right side of the back piece between the shoulder seams, right in the seam where the upper collar is attached to the garment. Backstitch at the beginning and end.



Press the seam.



Topstitch the top edge of the collar and around the zip area. Stitch on the upper collar, starting at the center, at 8mm from the edge and with a stitch length of 4mm.



Around the zip, stitch at 8mm from the zipper insertion seam.



Press.



Fold the sleeve piece right sides together. Align the underarm edges, pin, baste, and stitch on the overlocker with a seam allowance of 7mm, cutting off 3mm while serging.



Press the seam flat.



Press the seam allowances towards the back.



Fold the cuff piece, align the short edges, pin, baste and stitch on the sewing machine. Backstitch at the beginning and end.



Press the seam flat, then press the seam allowances open.



Fold the cuff wrong sides together and press.



Place the cuff to the right side of the sleeve's bottom edge. Align the edges, pin, and baste.



Turn the sleeve right side out.  
Turn the garment wrong side out.  
Place the sleeve into the armhole right sides together. Align the edges, match notches, pin, and baste.

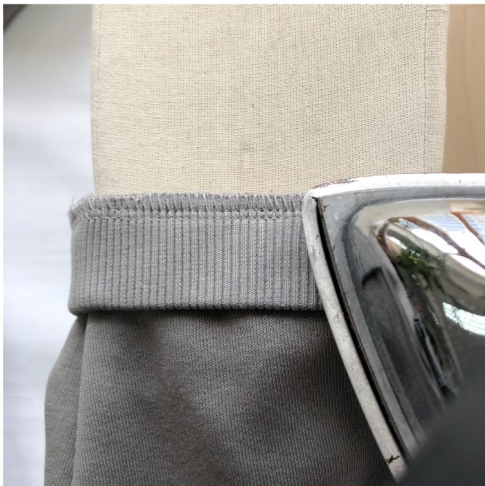
**Second fitting for garments with sleeves.**

**What for?** To verify the fit of the sleeve cap, the sleeve's width and length, as well as the cuff width.

**How?** We recommend doing this second fitting prior to permanently attaching the sleeves.

**What are we looking for?** We are checking the fit of the sleeve; it must lie smoothly, without any folds or draglines.

Set the sleeve in with two lines of stitching. First stitch one line, then a second right on top of the first one. Backstitch at the beginning and end. Overlock the seam allowances with the sleeve facing up.

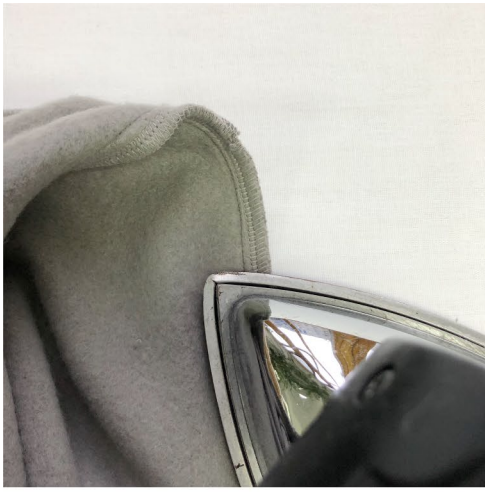


Now stitch the cuff on the overlocker with the cuff facing up at a 7mm seam allowance, cutting off 3mm while serging. Press the seam.



Press the seam allowance towards the sleeve.

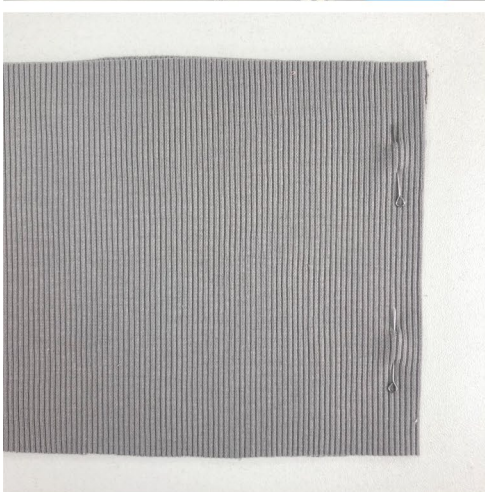




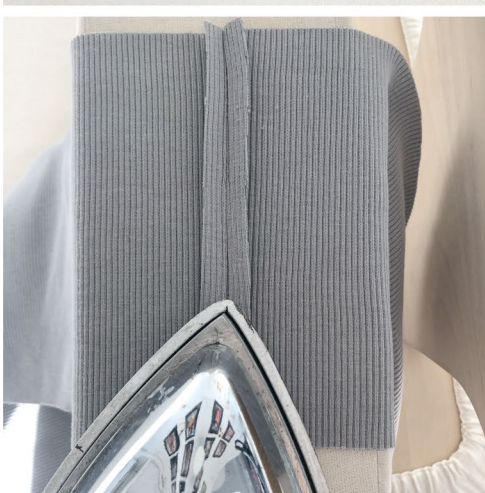
Press the armhole seam as sewn.



Press the armhole seam allowances towards the bodice.



Place the front and back waistband pieces right sides together. Align the side edges, pin, baste, and stitch on the sewing machine. Backstitch at the beginning and end.



Press the seams flat.  
Press the seam allowances open.



Fold the waistband in half wrong sides together. Align the long edges and press.



Place the raw edge of the waistband to the right side of the garment's lower edge, with the front waistband at the front, and the back waistband at the back. Match the side seams of the waistband and the garment.

Pin, baste, and stitch on the overlocker at 7mm seam allowance.

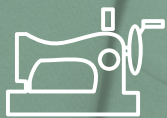
Serge with the waistband facing up, cutting off 3mm. Press the seam.



Press the seam allowance towards the garment.



Give the garment a final press.



**TADAAAAAAAA!!!**

*Publish your finished makes on  
Instagram using the hashtag  
#vikisews and #vikisews\_lindsey  
and win sewing prizes!*