



# Templates

## Issue 110

PRINT AT 100% SIZE

When printed  
at the correct  
size, this box  
will measure  
1in / 26mm  
square

# ROUND THE BEND

Emma Mary Newman page 20

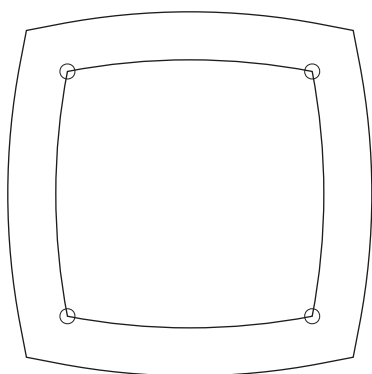
## PIECING TEMPLATES



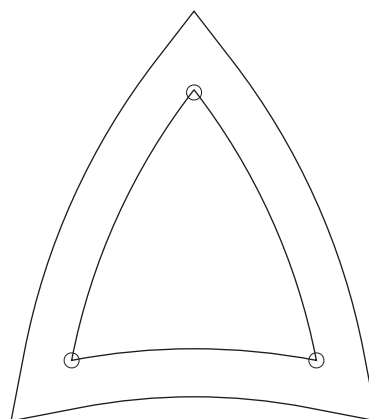
ACTUAL SIZE

PLEASE NOTE: Templates include seam allowances.

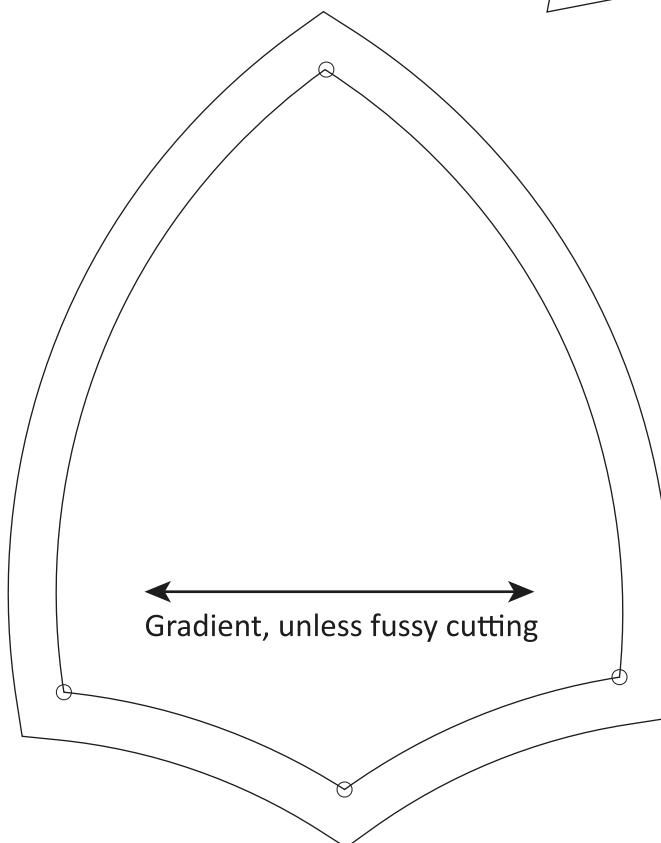
**TEMPLATE A**



**TEMPLATE B**



**TEMPLATE C**



When printed  
at the correct  
size, this box  
will measure  
1in / 26mm  
square

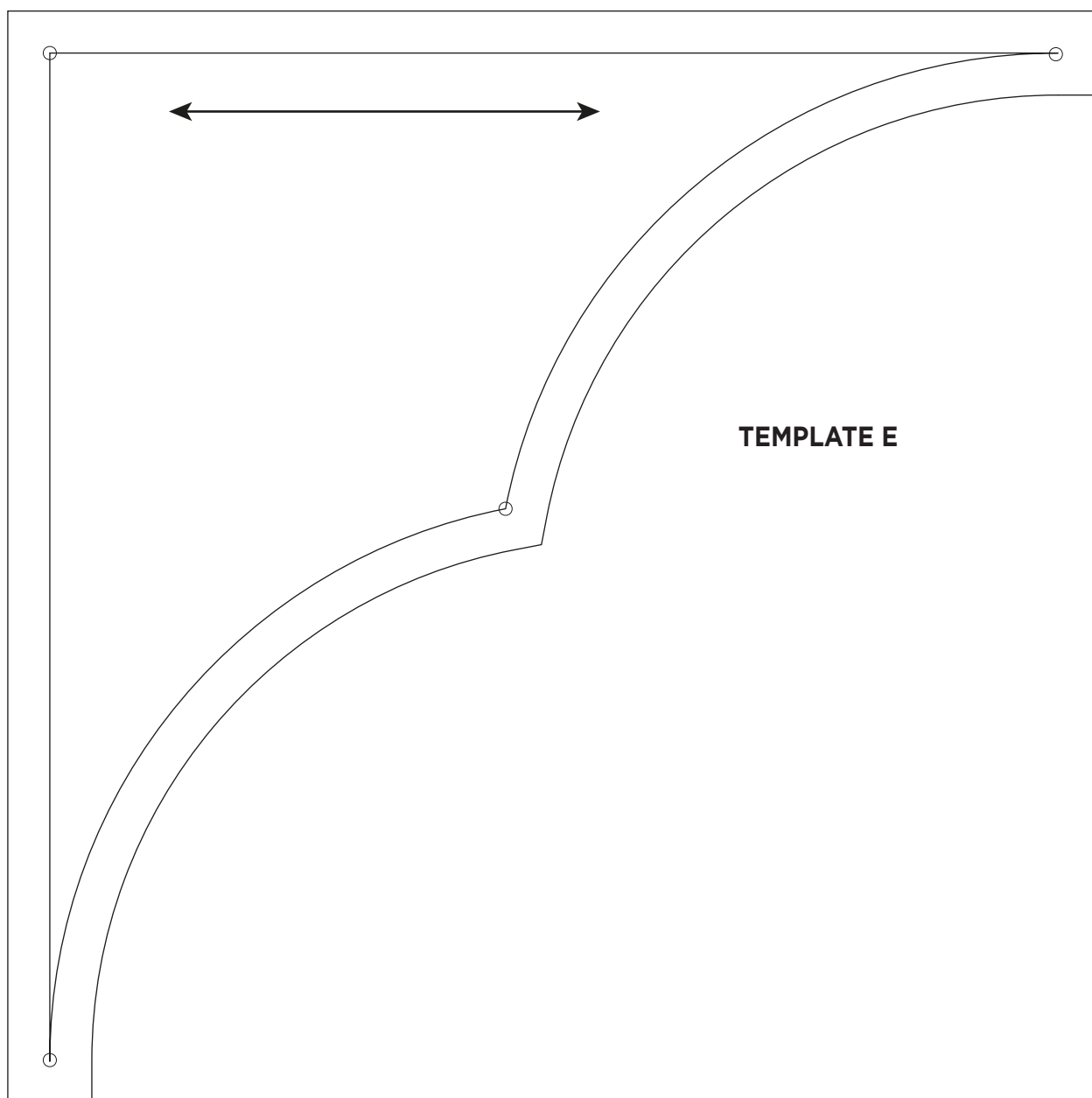
# ROUND THE BEND

Emma Mary Newman page 20

## PIECING TEMPLATES

← —  
ACTUAL SIZE

PLEASE NOTE: Templates include seam allowances.



When printed  
at the correct  
size, this box  
will measure  
1in / 26mm  
square

# ROUND THE BEND

Emma Mary Newman page 20

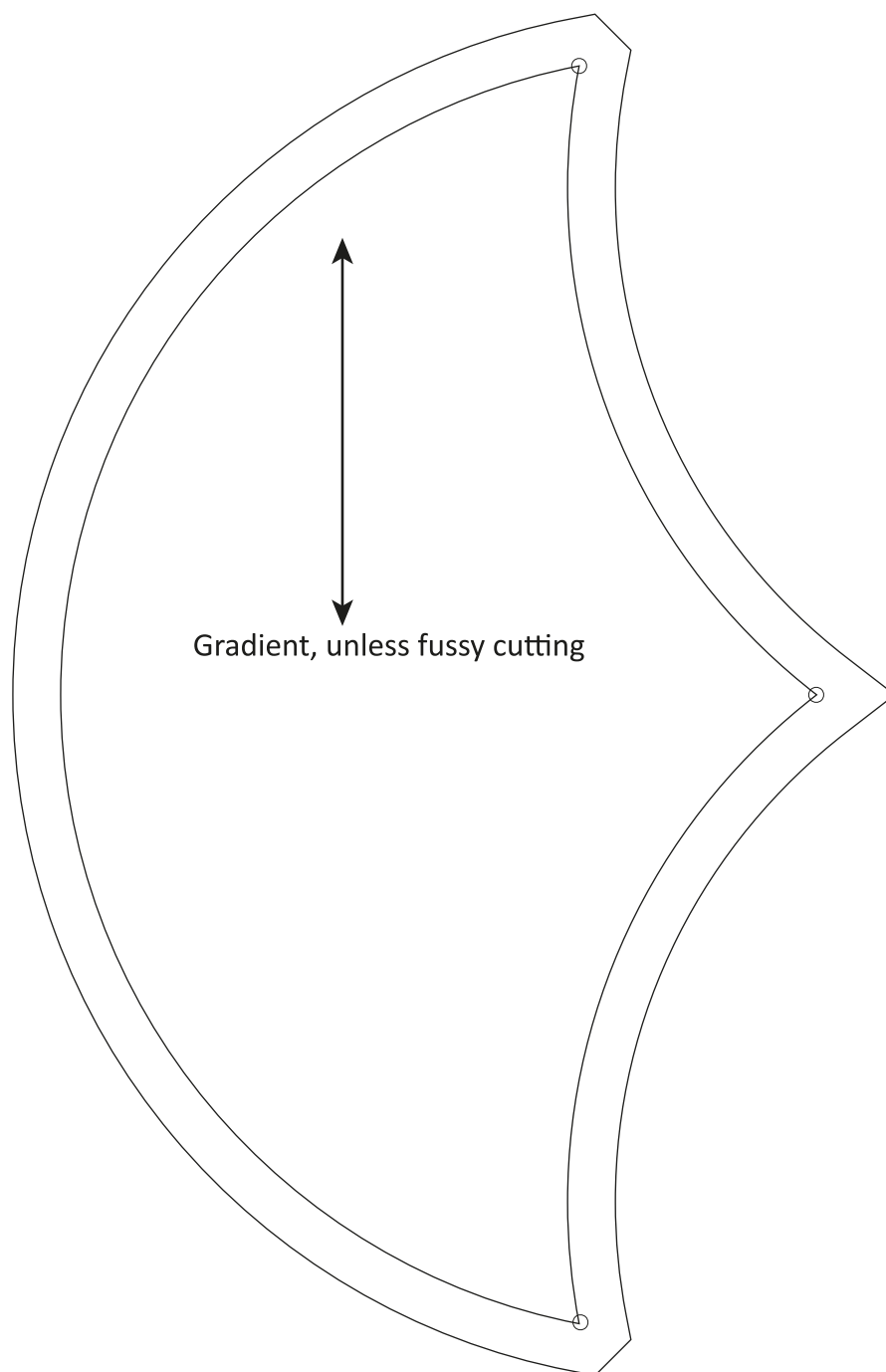
## PIECING TEMPLATES

— —

ACTUAL SIZE

PLEASE NOTE: Templates include seam allowances.

**TEMPLATE D**





When printed  
at the correct  
size, this box  
will measure  
1in / 26mm  
square

# SILVER JUBILEE

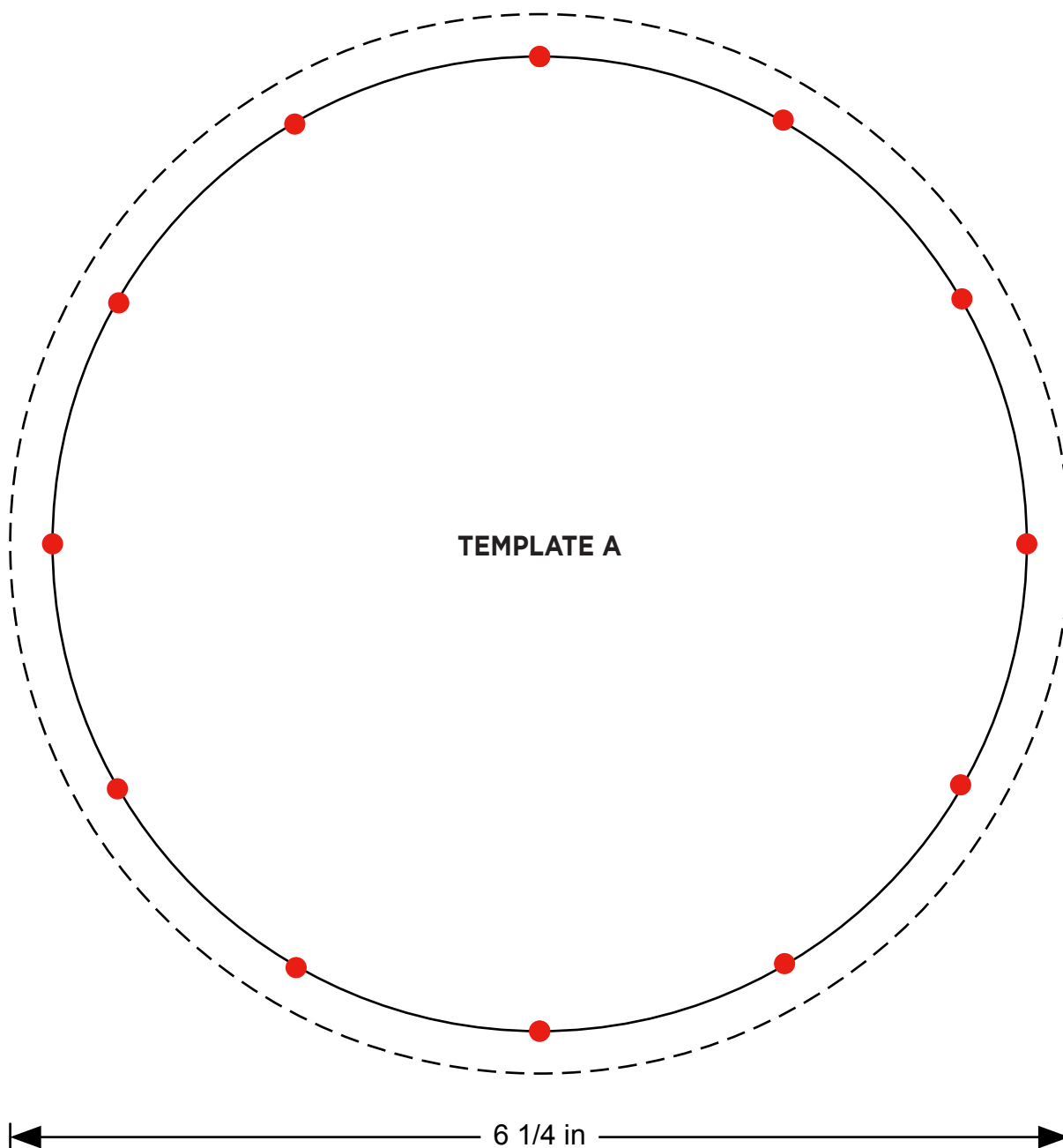
Lynne Goldsworthy page 27

## PIECING AND FPP TEMPLATES



ACTUAL SIZE

PLEASE NOTE: Templates include seam allowances.



When printed  
at the correct  
size, this box  
will measure  
1in / 26mm  
square

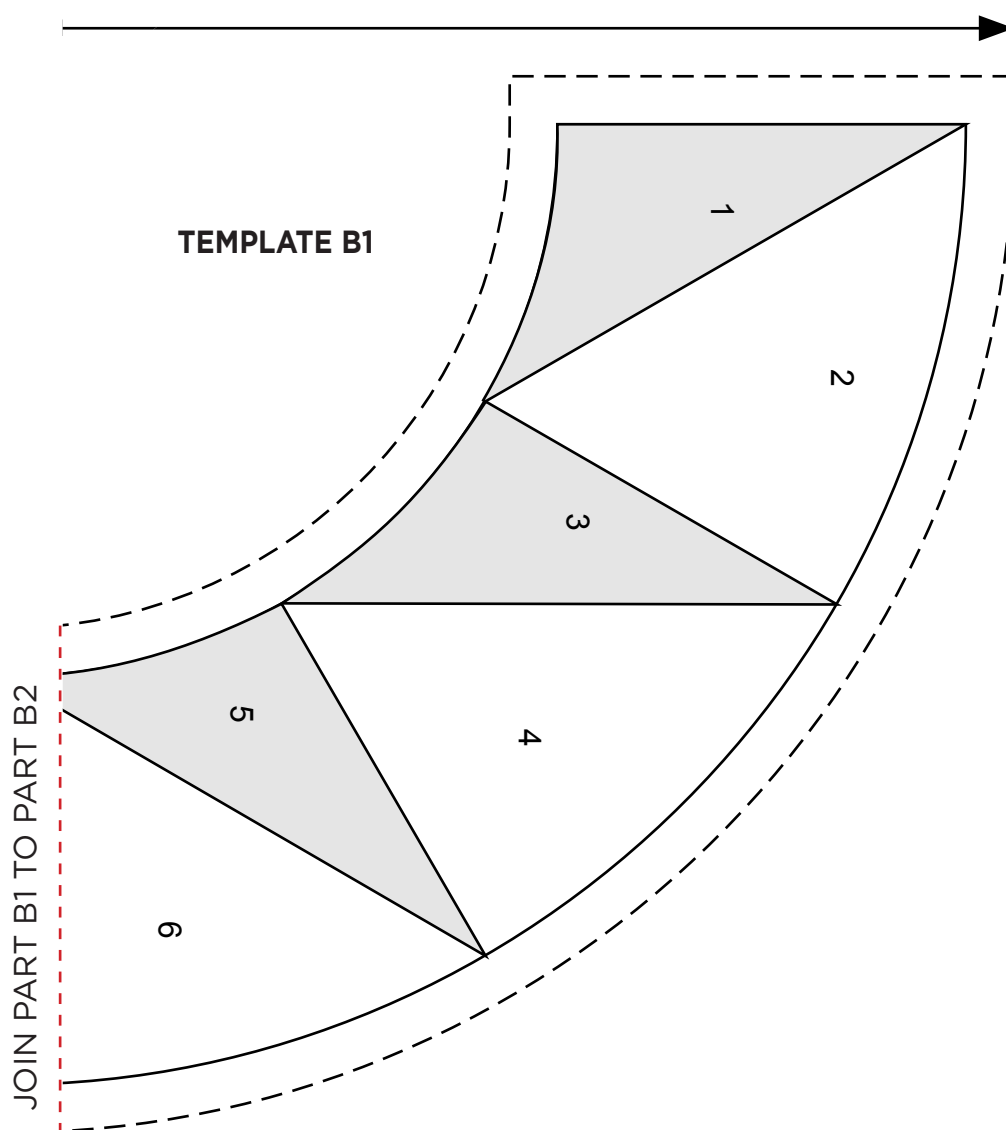
# SILVER JUBILEE

Lynne Goldsworthy page 27

## PIECING AND FPP TEMPLATES

← —  
ACTUAL SIZE

PLEASE NOTE: Templates include seam allowances.



When printed  
at the correct  
size, this box  
will measure  
1in / 26mm  
square

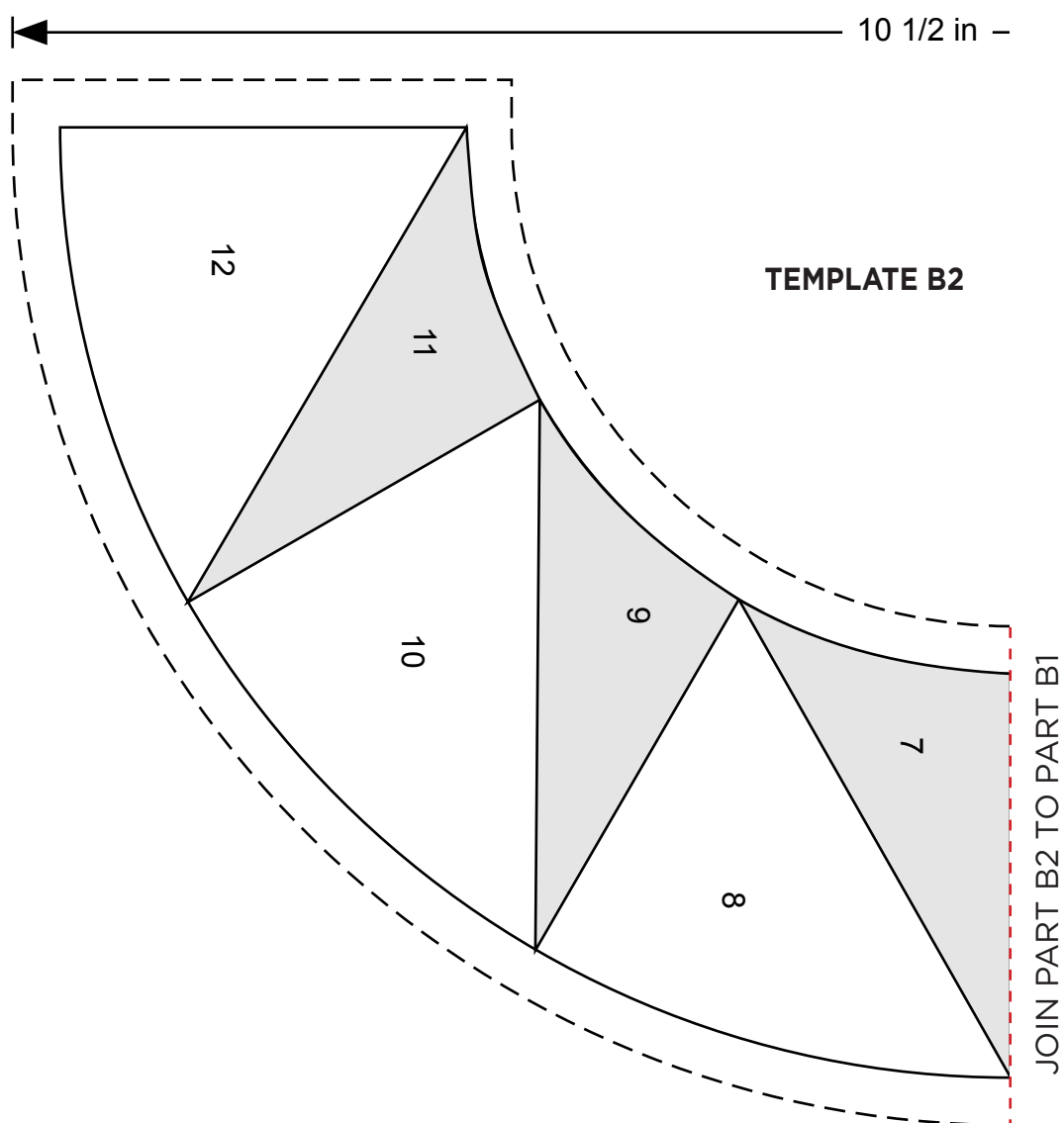
# SILVER JUBILEE

Lynne Goldsworthy page 27

## PIECING AND FPP TEMPLATES

← —  
ACTUAL SIZE

PLEASE NOTE: Templates include seam allowances.



When printed  
at the correct  
size, this box  
will measure  
1in / 26mm  
square

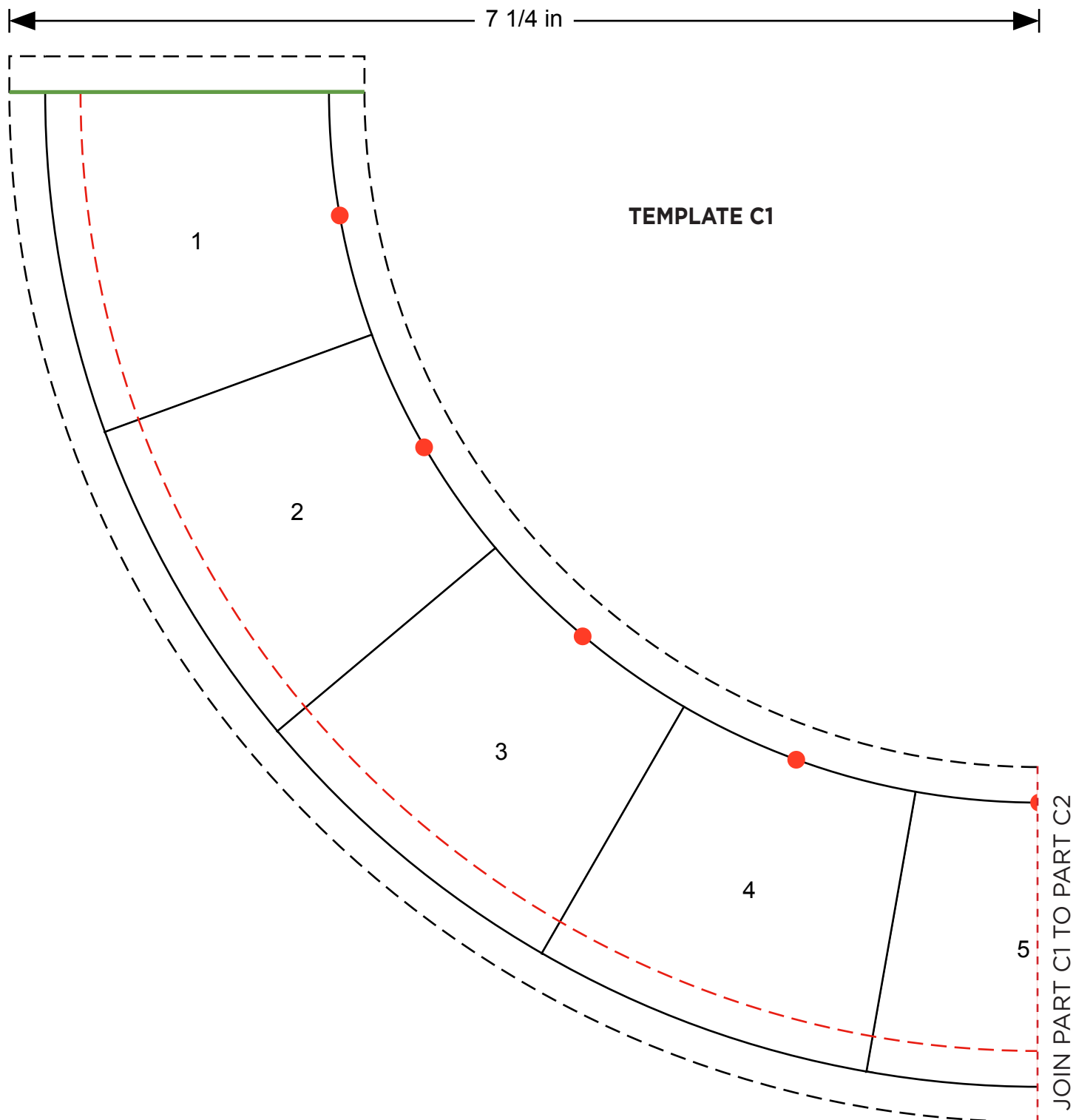
# SILVER JUBILEE

Lynne Goldsworthy page 27

## PIECING AND FPP TEMPLATES

ACTUAL SIZE

PLEASE NOTE: Templates include seam allowances.



When printed  
at the correct  
size, this box  
will measure  
1in / 26mm  
square

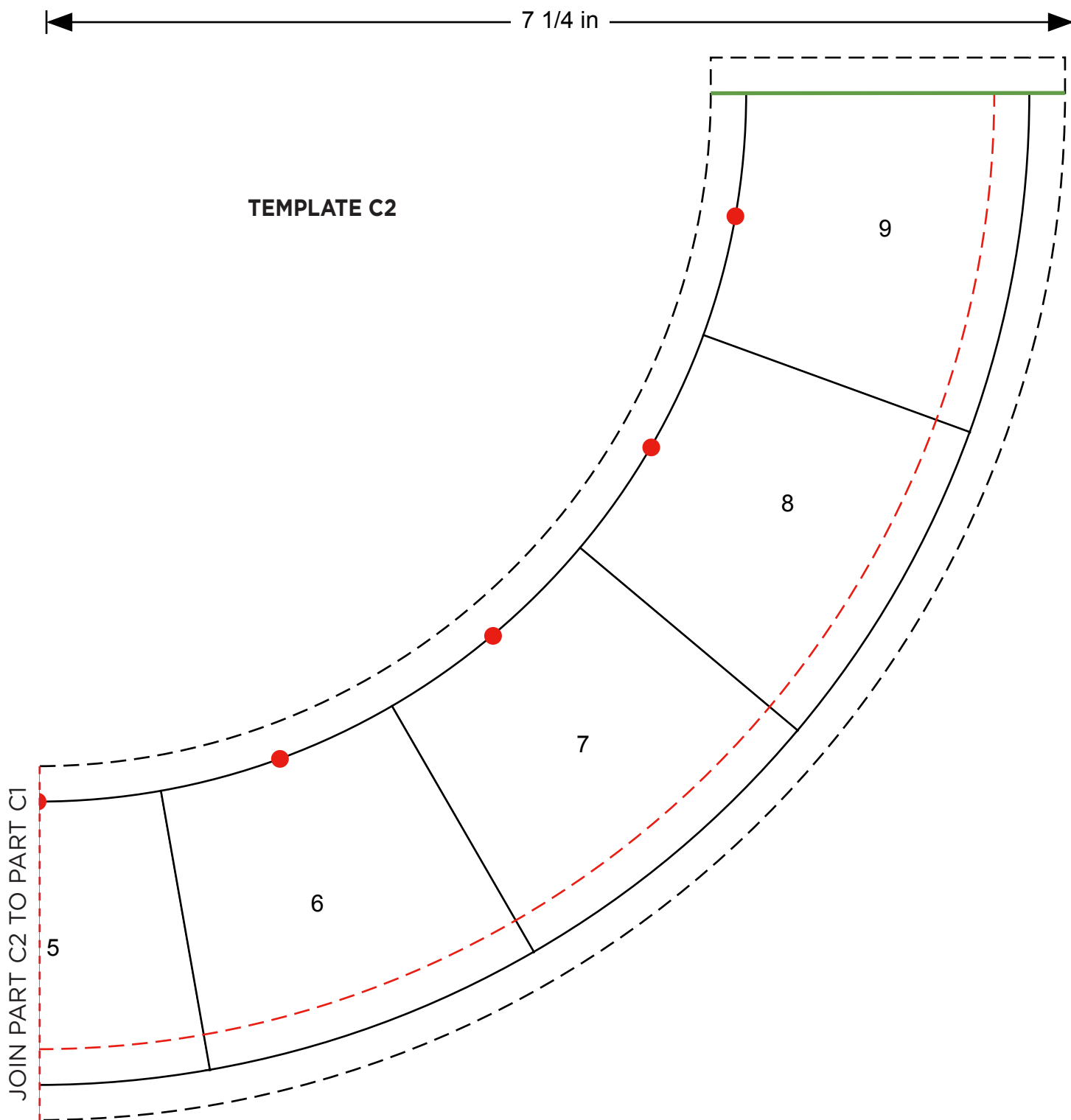
# SILVER JUBILEE

Lynne Goldsworthy page 27

## PIECING AND FPP TEMPLATES

ACTUAL SIZE

PLEASE NOTE: Templates include seam allowances.



When printed  
at the correct  
size, this box  
will measure  
1in / 26mm  
square

# WINTER BEAUTY

Yasmeen Branton page 39

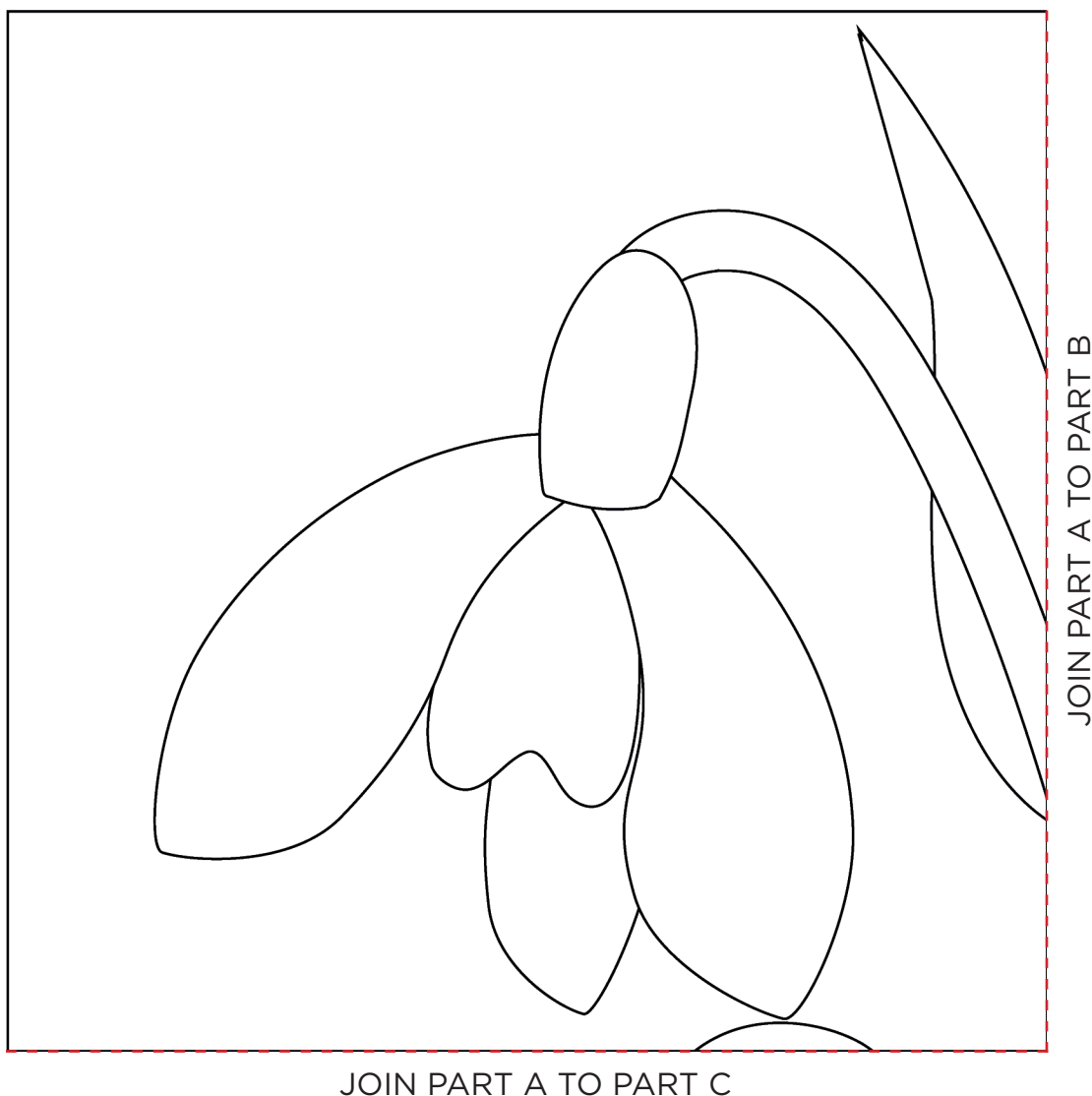
## APPLIQUÉ AND LAYOUT TEMPLATES



ACTUAL SIZE

PLEASE NOTE: All templates DO NOT include seam allowances.

### PART A



When printed  
at the correct  
size, this box  
will measure  
1in / 26mm  
square

# WINTER BEAUTY

Yasmeen Branton page 39

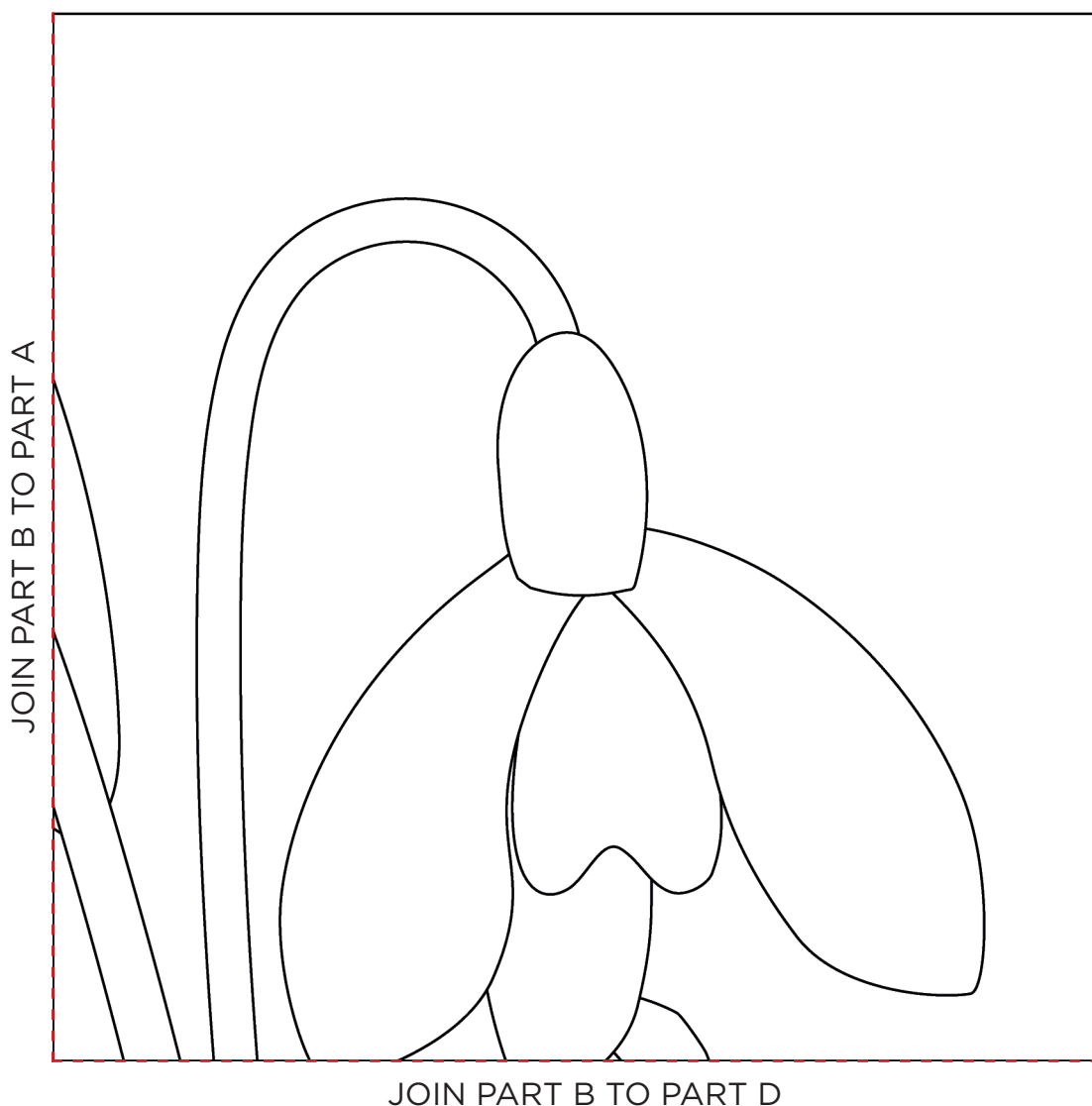
## APPLIQUÉ AND LAYOUT TEMPLATES

← —

ACTUAL SIZE

PLEASE NOTE: All templates DO NOT include seam allowances.

### PART B



When printed  
at the correct  
size, this box  
will measure  
1in / 26mm  
square

# WINTER BEAUTY

Yasmeen Branton page 39

## APPLIQUÉ AND LAYOUT TEMPLATES

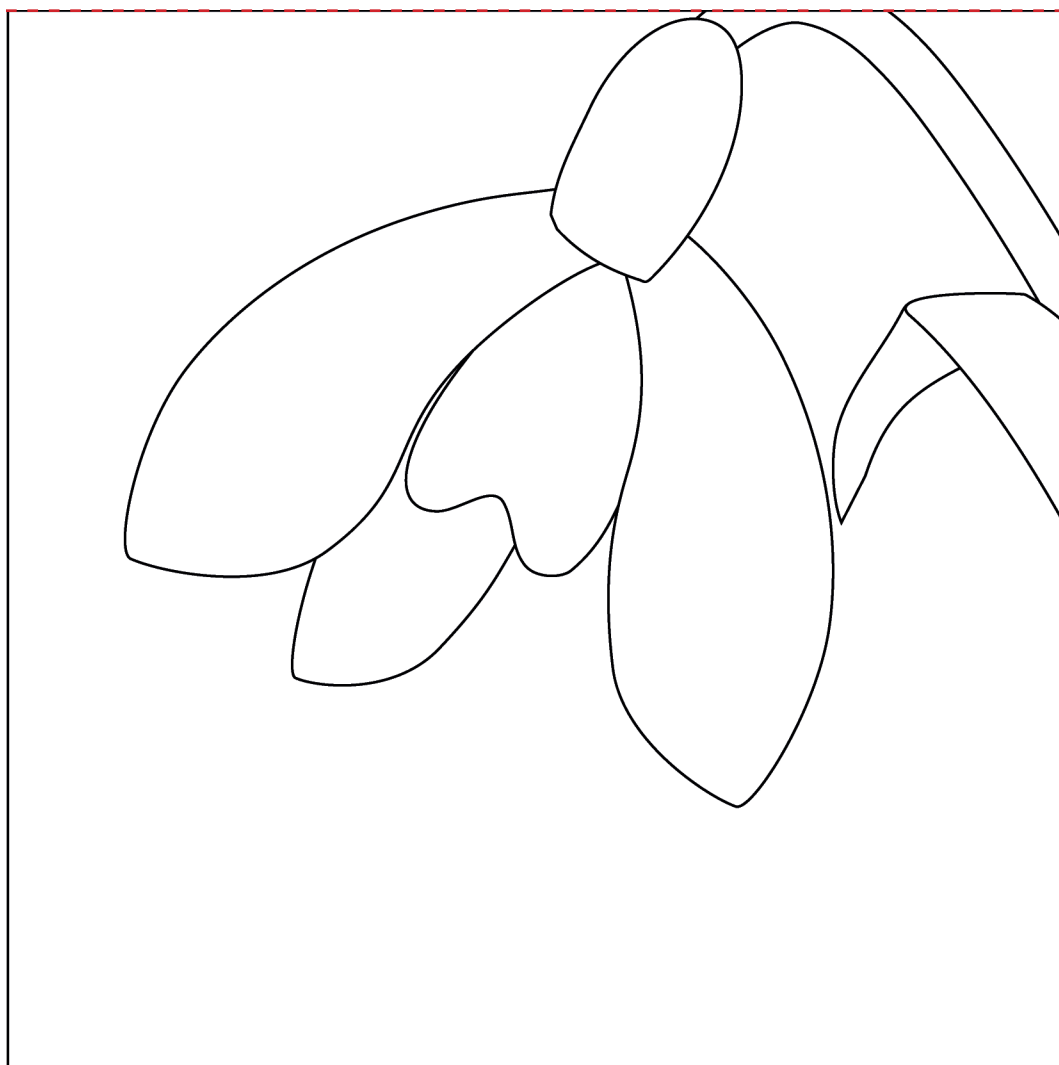


ACTUAL SIZE

PLEASE NOTE: All templates DO NOT include seam allowances.

PART C

JOIN PART C TO PART A



JOIN PART C TO PART D



When printed  
at the correct  
size, this box  
will measure  
1in / 26mm  
square

# WINTER BEAUTY

Yasmeen Branton page 39

## APPLIQUÉ AND LAYOUT TEMPLATES

← —

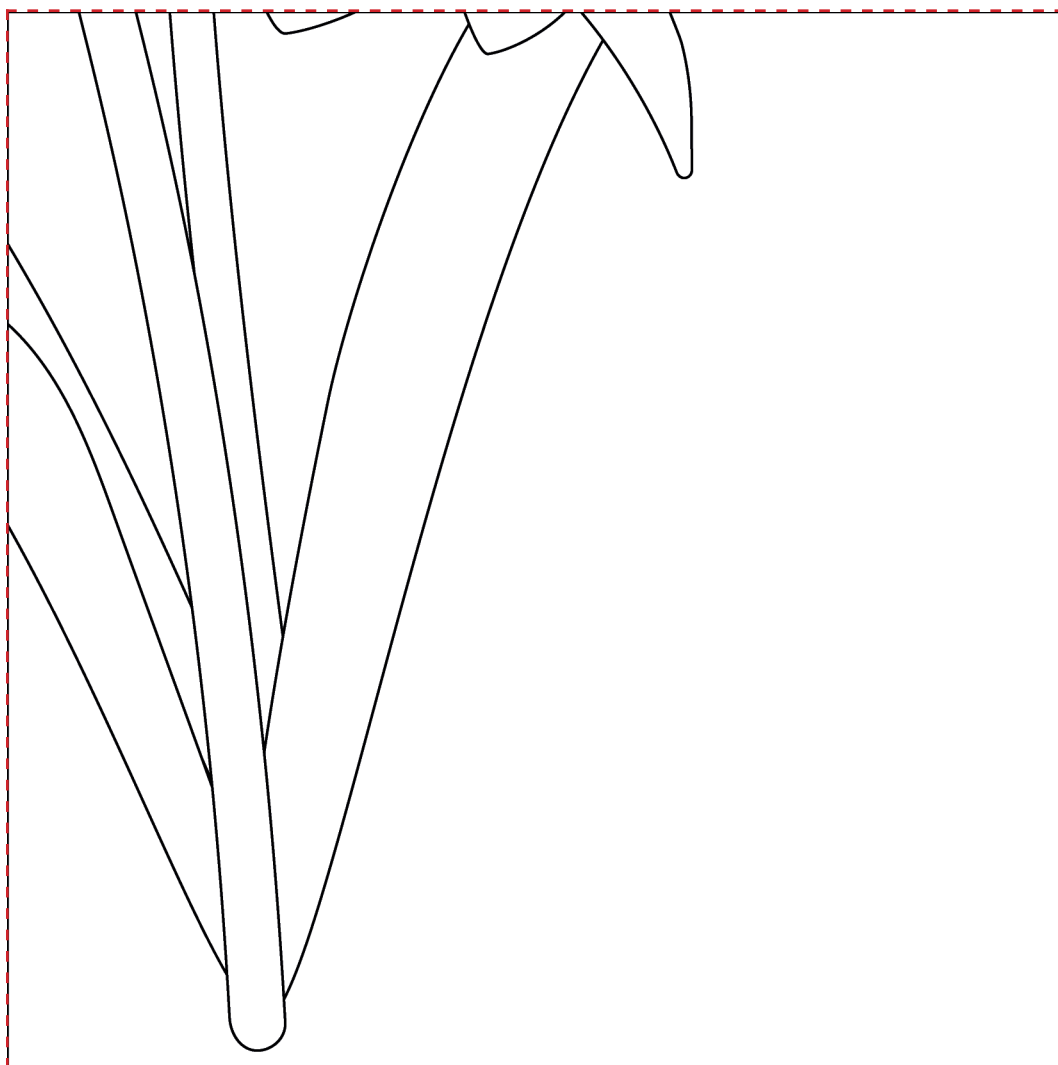
ACTUAL SIZE

PLEASE NOTE: All templates DO NOT include seam allowances.

PART D

JOIN PART D TO PART B

JOIN PART D TO PART C



When printed  
at the correct  
size, this box  
will measure  
1in / 26mm  
square

# WINTER BEAUTY

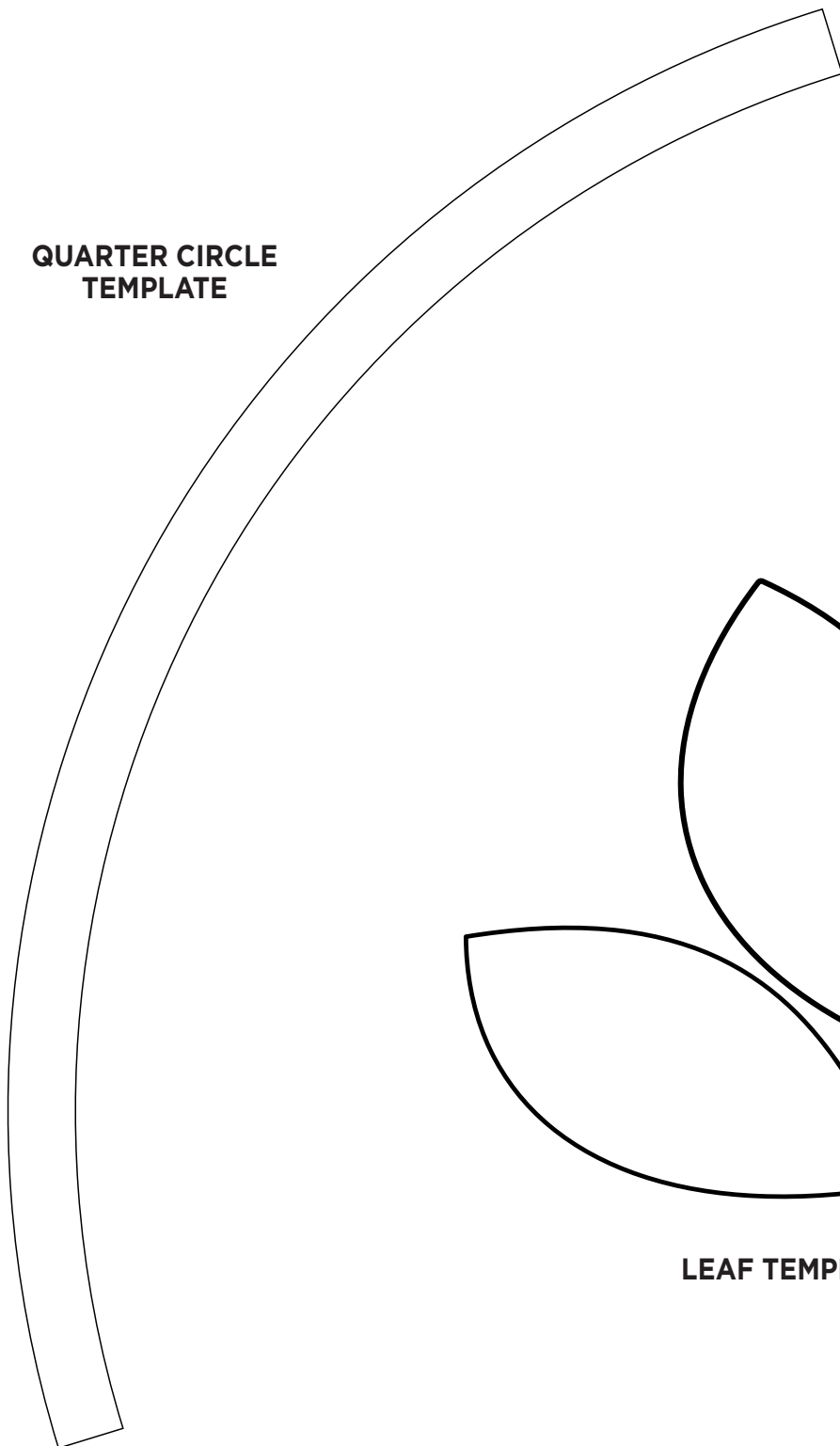
Yasmeen Branton page 39

## APPLIQUÉ AND LAYOUT TEMPLATES

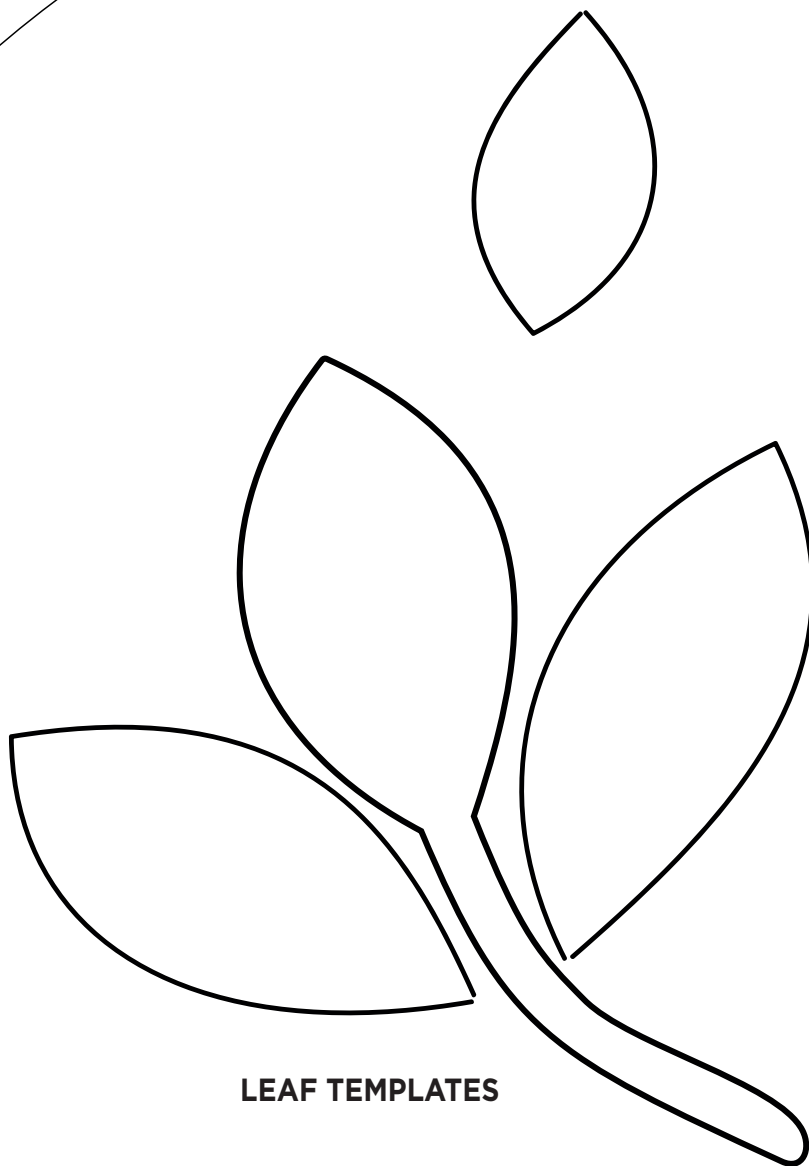
ACTUAL SIZE

PLEASE NOTE: All templates DO NOT include seam allowances.

**QUARTER CIRCLE  
TEMPLATE**



**LEAF TEMPLATES**



When printed  
at the correct  
size, this box  
will measure  
1in / 26mm  
square

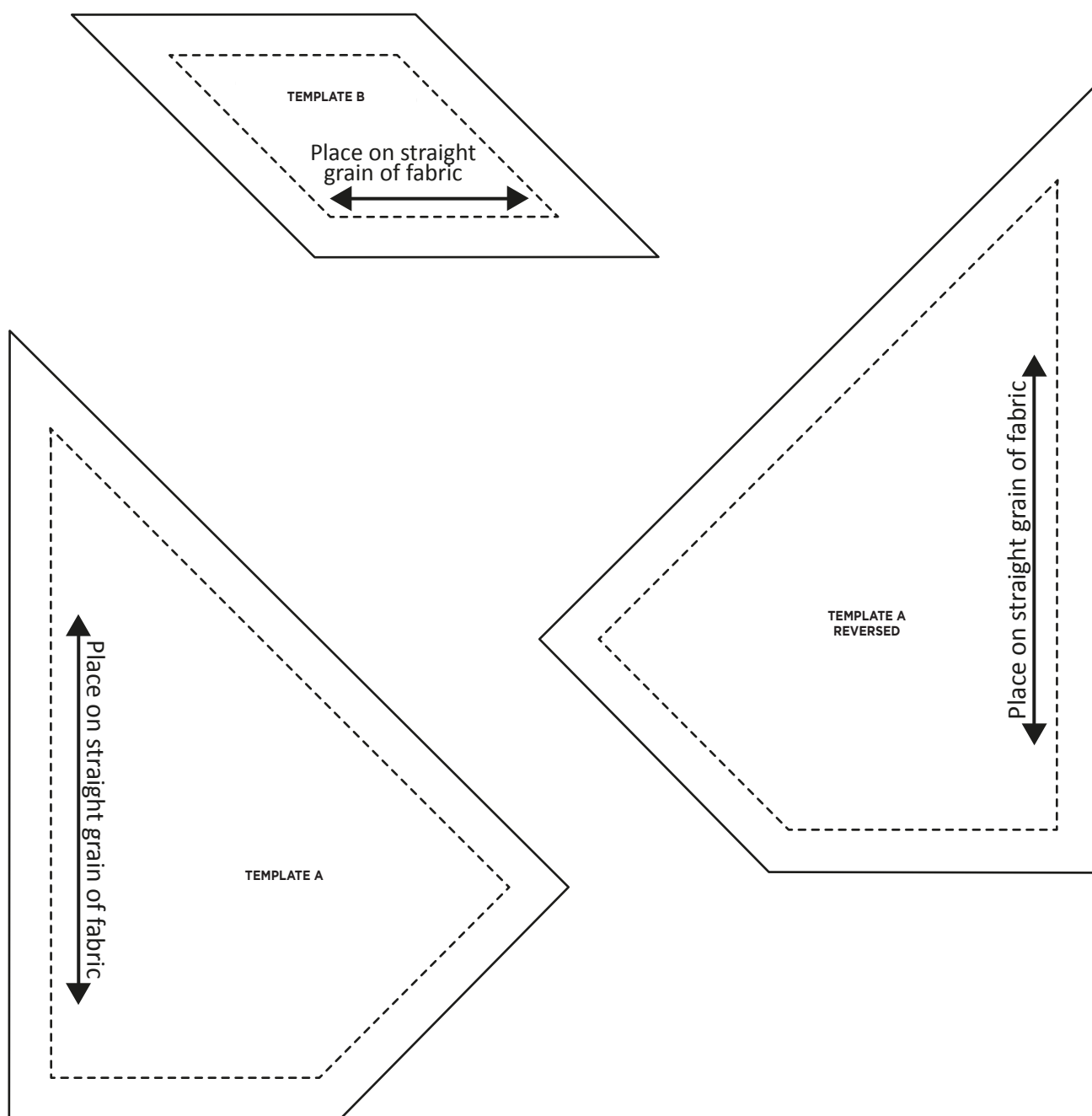
# ESSENTIAL GUIDE

Lin Clements page 45

## PIECING AND HST TEMPLATES

ACTUAL SIZE

PLEASE NOTE: All templates include seam allowances.



When printed  
at the correct  
size, this box  
will measure  
1in / 26mm  
square

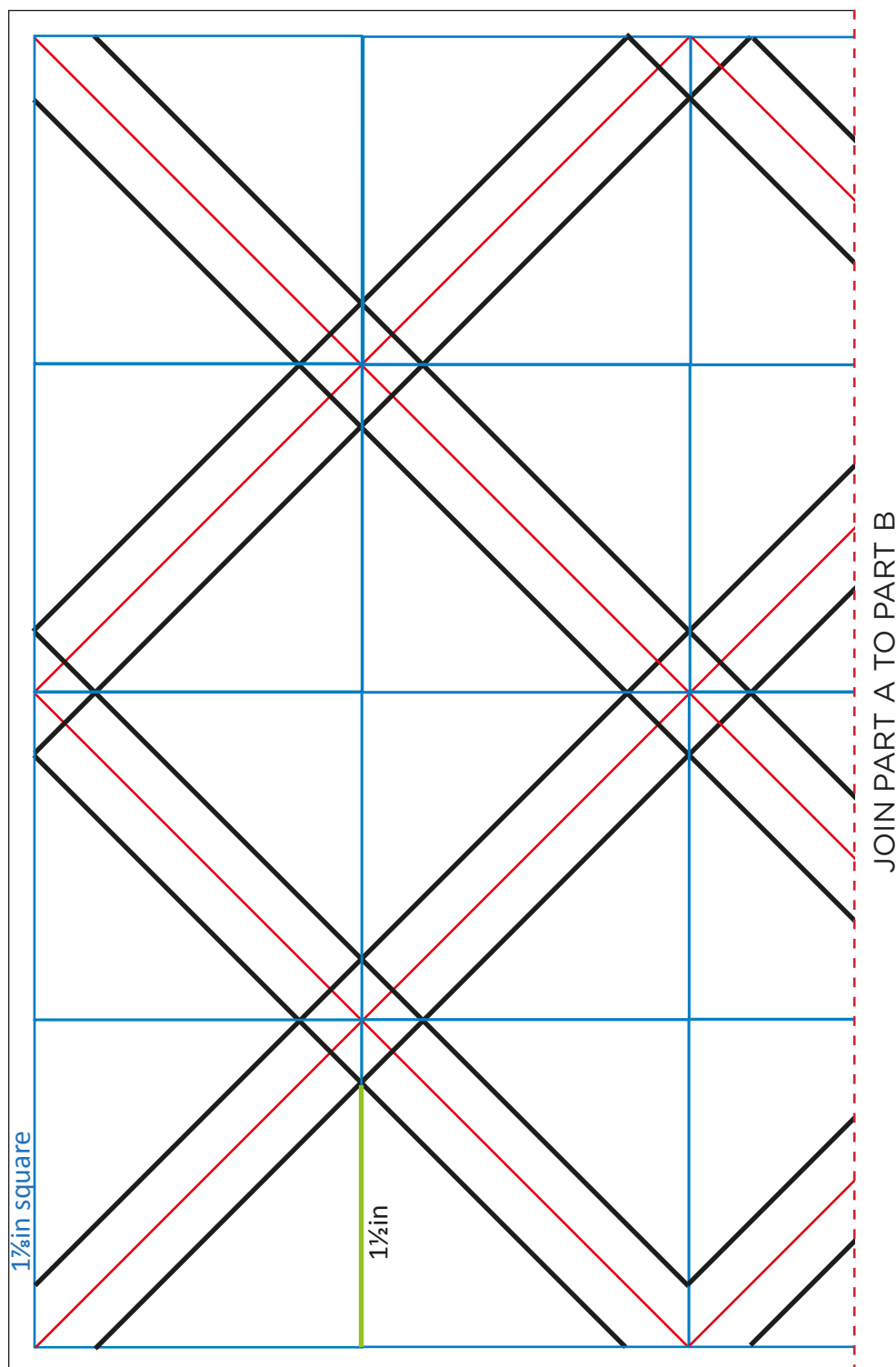
# ESSENTIAL GUIDE

Lin Clements page 45

## PIECING AND HST TEMPLATES

ACTUAL SIZE

PLEASE NOTE: All templates include seam allowances.



HST TEMPLATE 1

PART A

When printed  
at the correct  
size, this box  
will measure  
1in / 26mm  
square

# ESSENTIAL GUIDE

Lin Clements page 45

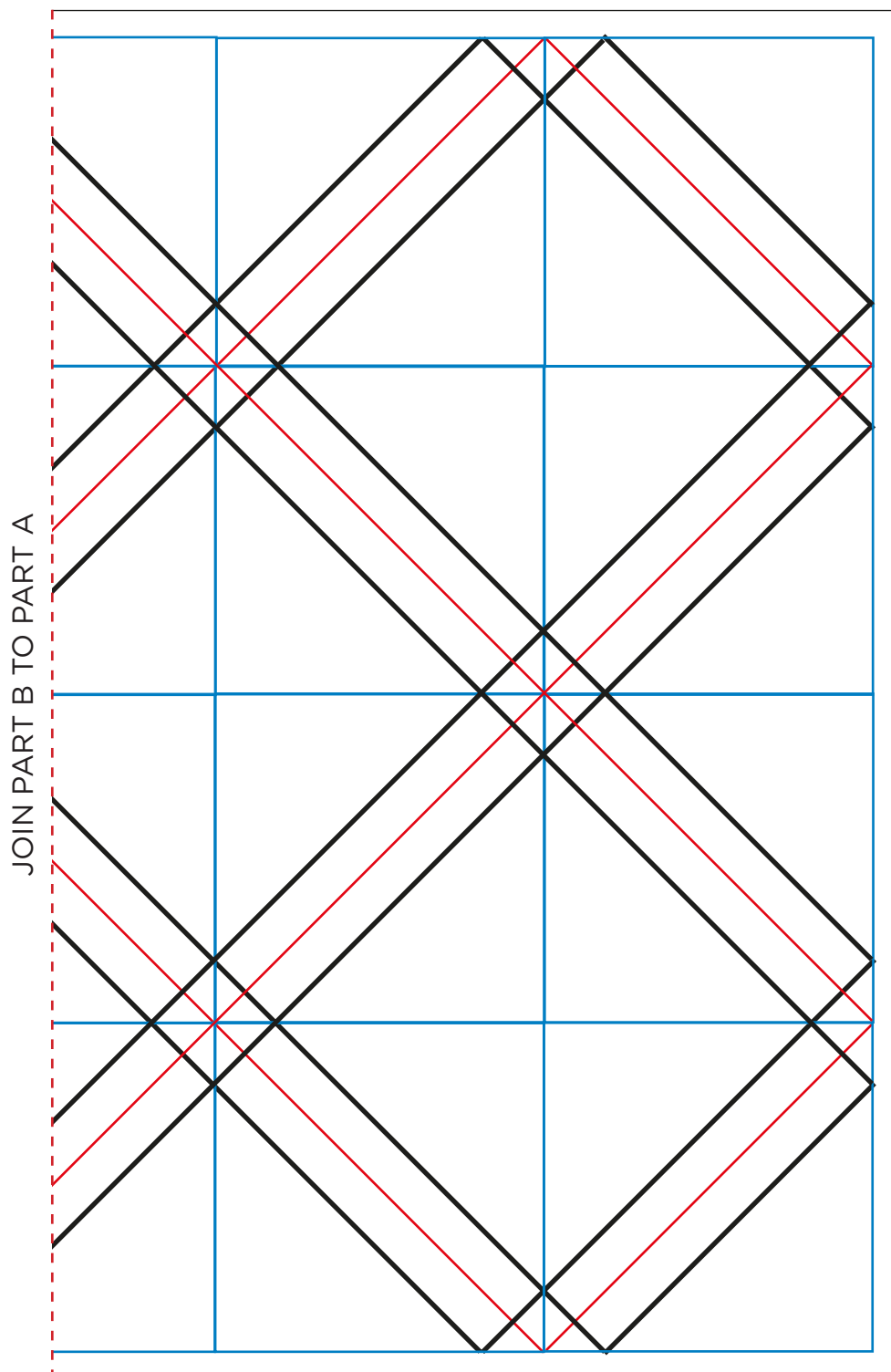
## PIECING AND HST TEMPLATES

ACTUAL SIZE

PLEASE NOTE: All templates include seam allowances.

### HST TEMPLATE 1

#### PART B



When printed  
at the correct  
size, this box  
will measure  
1in / 26mm  
square

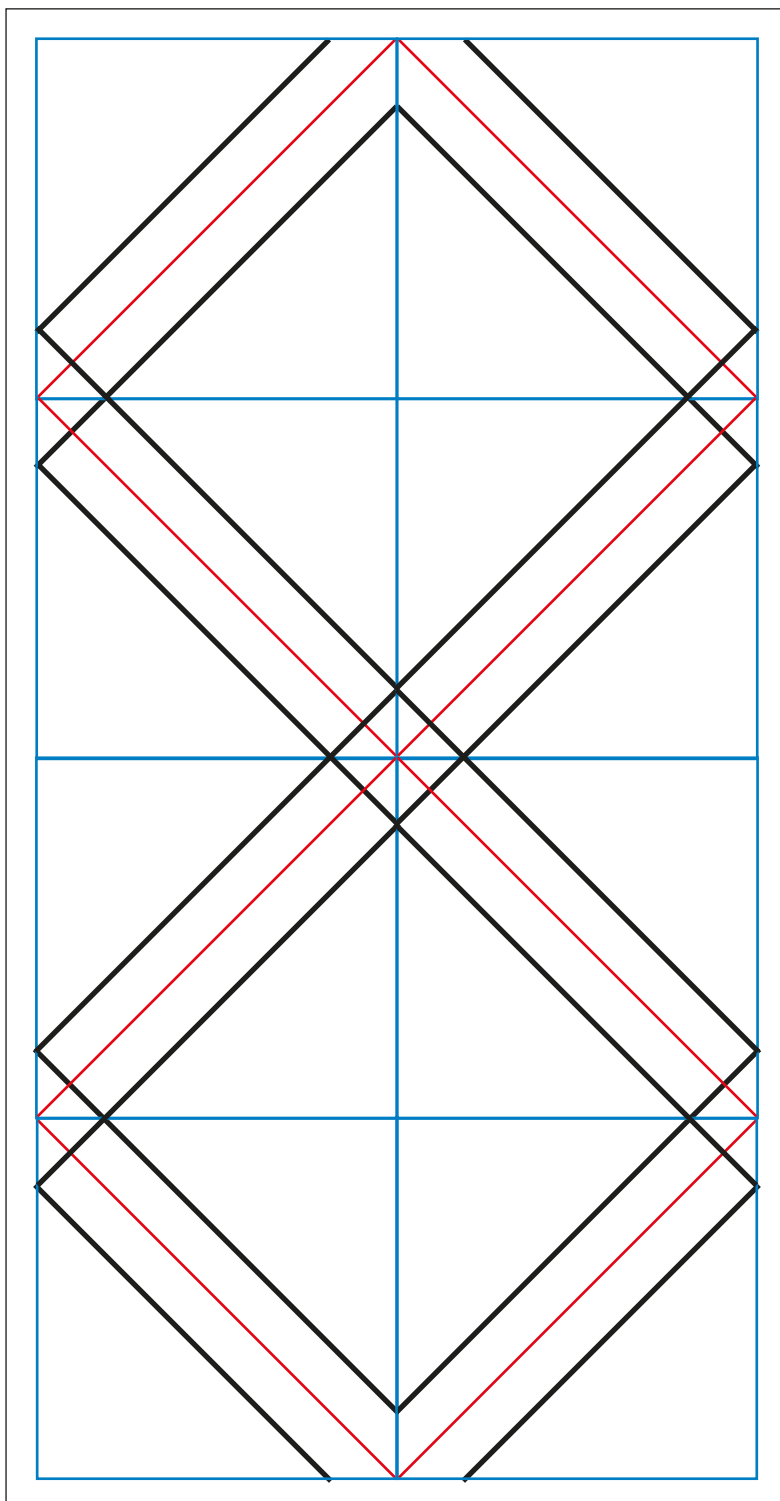
# ESSENTIAL GUIDE

Lin Clements page 45

## PIECING AND HST TEMPLATES

← —  
ACTUAL SIZE

PLEASE NOTE: All templates include seam allowances.



TEMPLATE 2

When printed  
at the correct  
size, this box  
will measure  
1in / 26mm  
square

# CHARLIE'S WINTER WONDERLAND

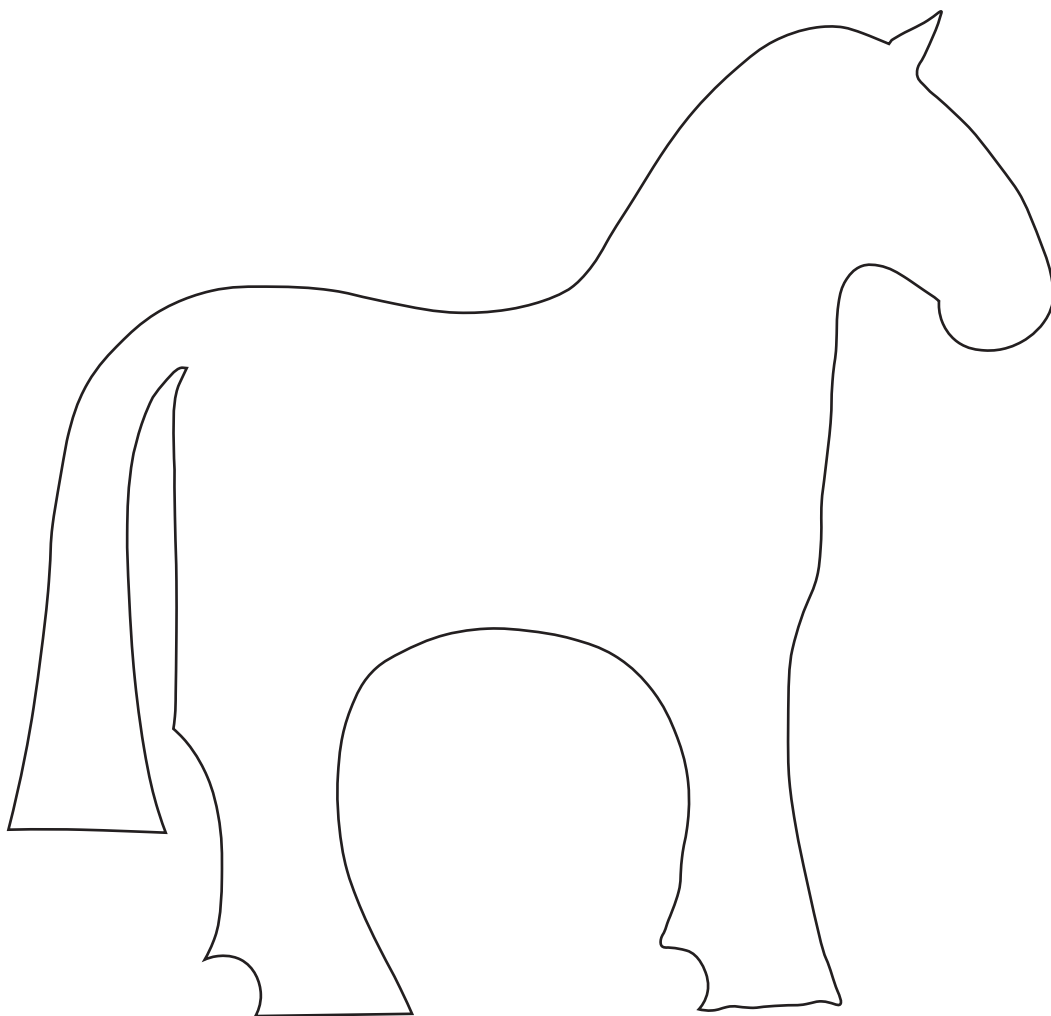
Jo Colwill page 54

## APPLIQUÉ TEMPLATES

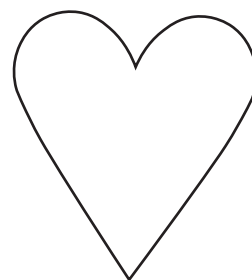


ACTUAL SIZE

PLEASE NOTE: Templates DO NOT include seam allowances.



**SMALL HORSE  
TEMPLATE**



**SMALL HEART  
TEMPLATE**

When printed  
at the correct  
size, this box  
will measure  
1in / 26mm  
square

# CHARLIE'S WINTER WONDERLAND

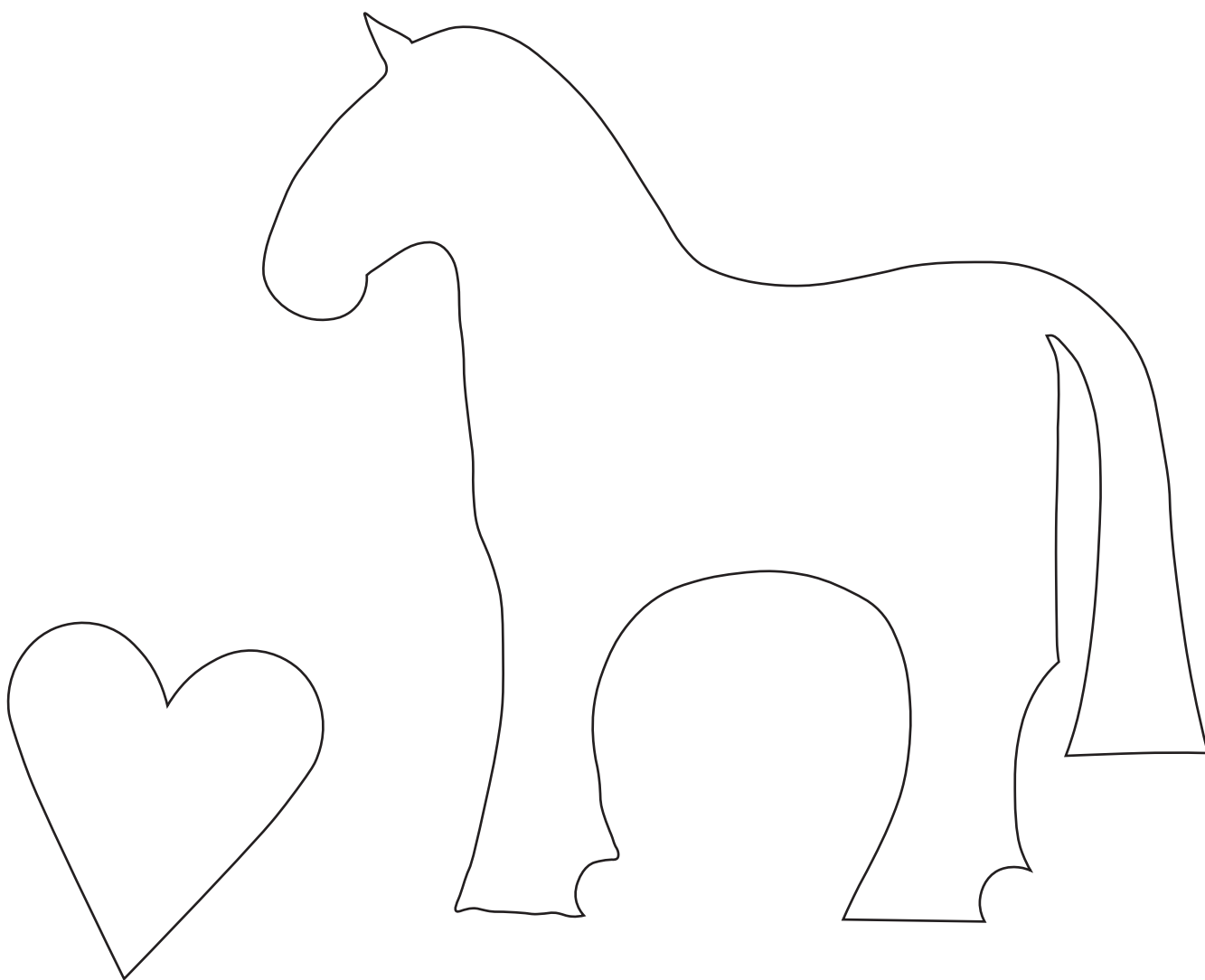
Jo Colwill page 54

## APPLIQUÉ TEMPLATES



ACTUAL SIZE

PLEASE NOTE: Templates DO NOT include seam allowances.



**LARGE HEART  
TEMPLATE**

**SMALL HORSE  
TEMPLATE**



When printed  
at the correct  
size, this box  
will measure  
1in / 26mm  
square

# CHARLIE'S WINTER WONDERLAND

Jo Colwill page 54

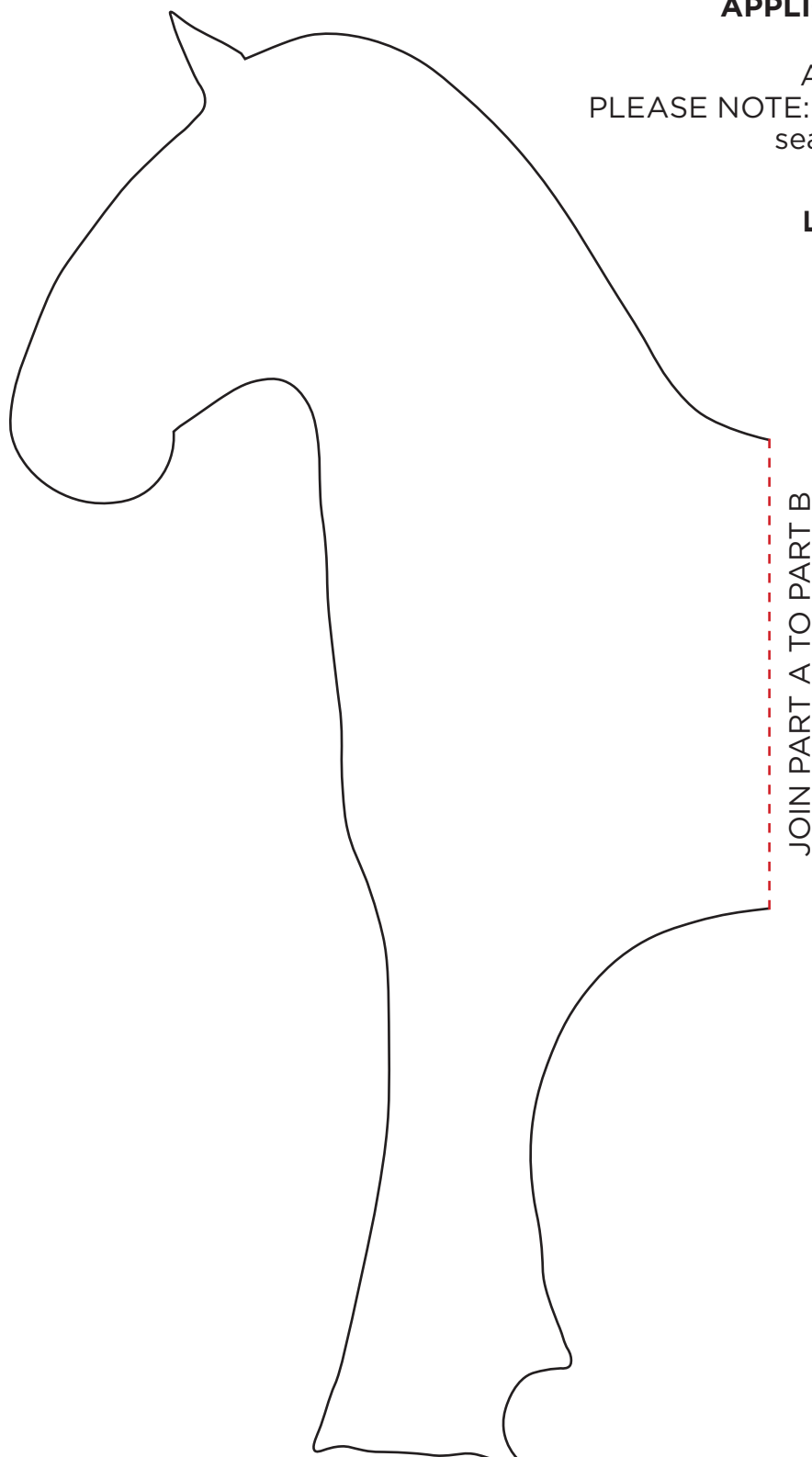
## APPLIQUÉ TEMPLATES

ACTUAL SIZE

PLEASE NOTE: Templates DO NOT include  
seam allowances.

### LARGE HORSE TEMPLATE

PART A



When printed  
at the correct  
size, this box  
will measure  
1in / 26mm  
square

# CHARLIE'S WINTER WONDERLAND

Jo Colwill page 54

## APPLIQUÉ TEMPLATES



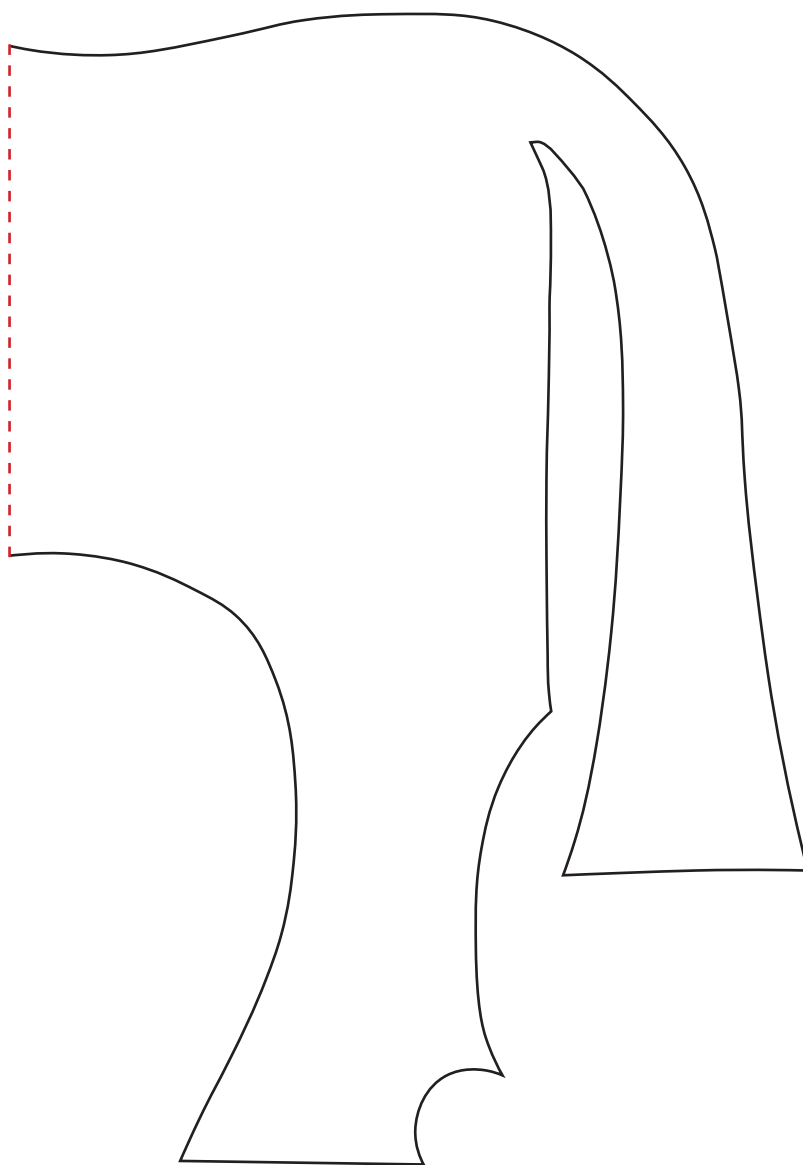
ACTUAL SIZE

PLEASE NOTE: Templates DO NOT include seam allowances.

### LARGE HORSE TEMPLATE

PART B

JOIN PART B TO PART A



When printed  
at the correct  
size, this box  
will measure  
1in / 26mm  
square

# CHARLIE'S WINTER WONDERLAND

Jo Colwill page 54

## APPLIQUÉ TEMPLATES



ACTUAL SIZE

PLEASE NOTE: Templates DO NOT include seam allowances.

PART A



When printed  
at the correct  
size, this box  
will measure  
1in / 26mm  
square

# CHARLIE'S WINTER WONDERLAND

Jo Colwill page 54

## APPLIQUÉ TEMPLATES

ACTUAL SIZE

PLEASE NOTE: Templates DO NOT include seam allowances.

### PART B



When printed  
at the correct  
size, this box  
will measure  
1in / 26mm  
square

# CHARLIE'S WINTER WONDERLAND

Jo Colwill page 54

## APPLIQUÉ TEMPLATES

← —

ACTUAL SIZE

PLEASE NOTE: Templates DO NOT include seam allowances.

PART C



When printed  
at the correct  
size, this box  
will measure  
1in / 26mm  
square

# CHARLIE'S WINTER WONDERLAND

Jo Colwill page 54

## APPLIQUÉ TEMPLATES



ACTUAL SIZE

PLEASE NOTE: Templates DO NOT include seam allowances.

PART D

JOIN PART D TO PART A



JOIN PART D TO PART E

JOIN PART D TO PART G

When printed  
at the correct  
size, this box  
will measure  
1in / 26mm  
square

# CHARLIE'S WINTER WONDERLAND

Jo Colwill page 54

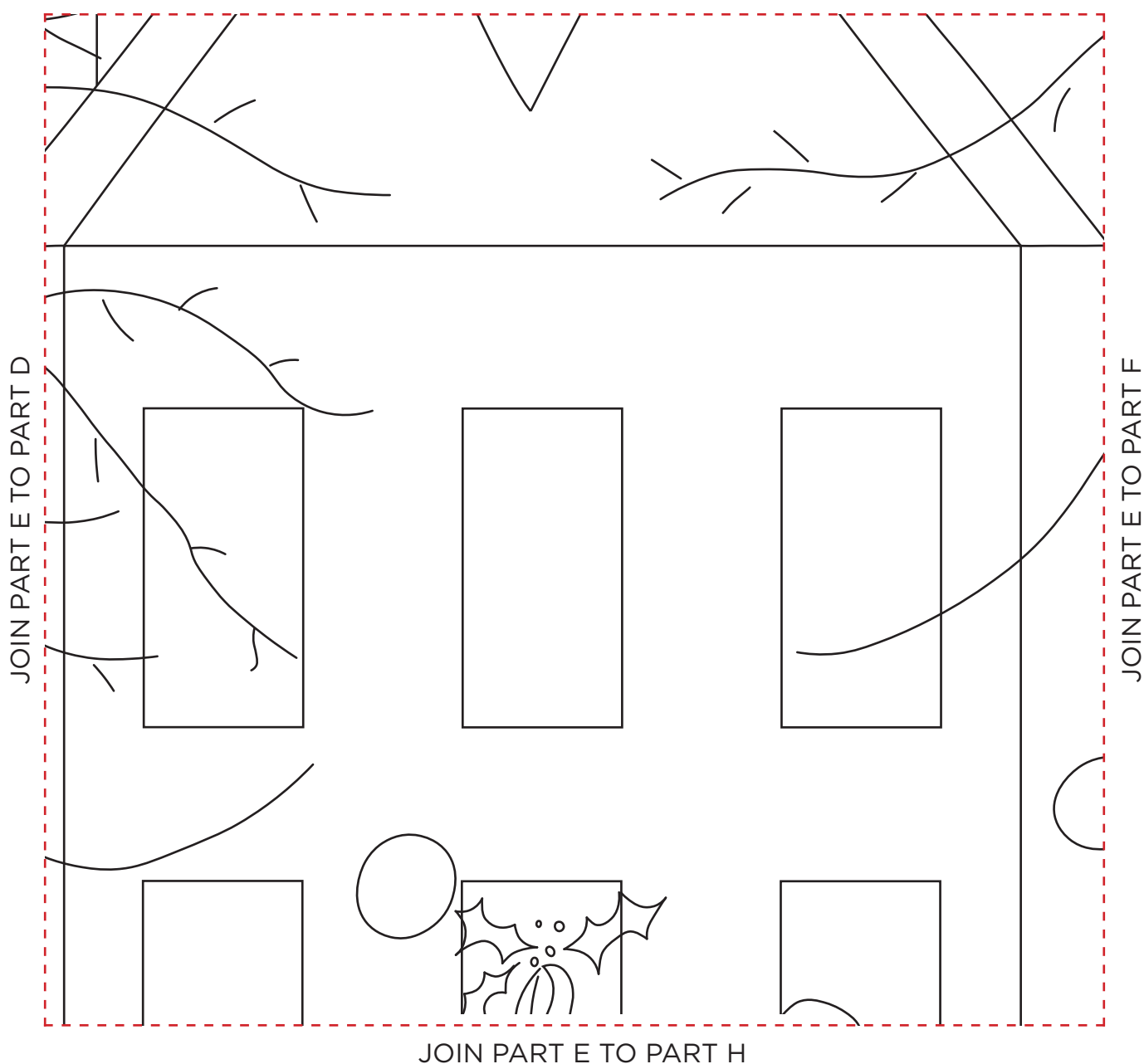
## APPLIQUÉ TEMPLATES

← —  
ACTUAL SIZE

PLEASE NOTE: Templates DO NOT include seam allowances.

PART E

JOIN PART E TO PART B



When printed  
at the correct  
size, this box  
will measure  
1in / 26mm  
square

# CHARLIE'S WINTER WONDERLAND

Jo Colwill page 54

## APPLIQUÉ TEMPLATES

ACTUAL SIZE

PLEASE NOTE: Templates DO NOT include seam allowances.

PART F

JOIN PART F TO PART C



JOIN PART F TO PART I



When printed  
at the correct  
size, this box  
will measure  
1in / 26mm  
square

# CHARLIE'S WINTER WONDERLAND

Jo Colwill page 54

## APPLIQUÉ TEMPLATES

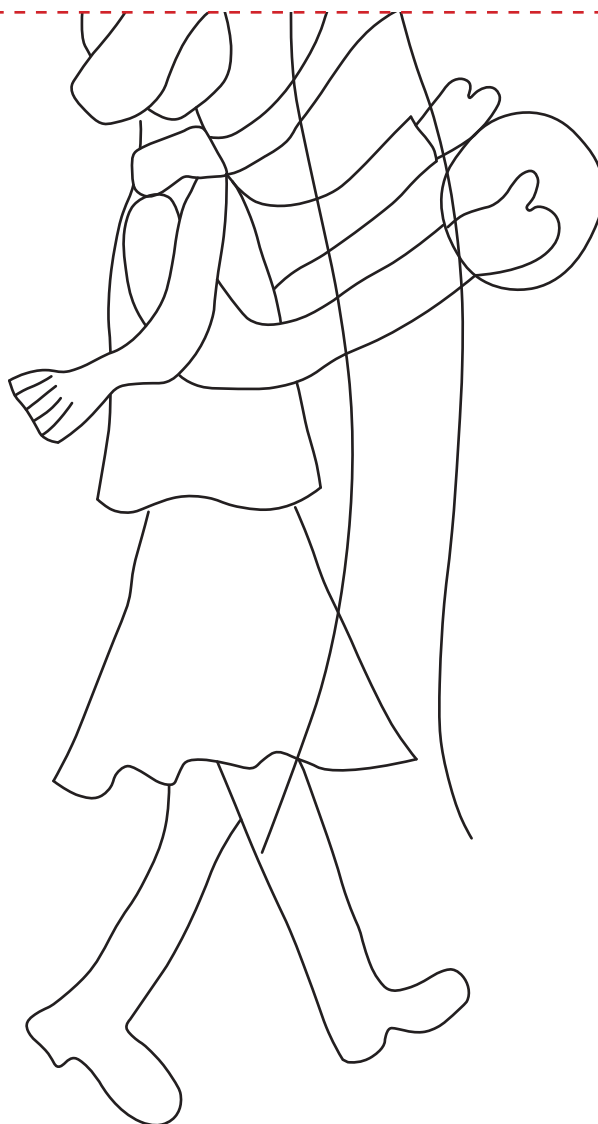


ACTUAL SIZE

PLEASE NOTE: Templates DO NOT include seam allowances.

PART G

JOIN PART G TO PART D



JOIN PART G TO PART H

When printed  
at the correct  
size, this box  
will measure  
1in / 26mm  
square

# CHARLIE'S WINTER WONDERLAND

Jo Colwill page 54

## APPLIQUÉ TEMPLATES

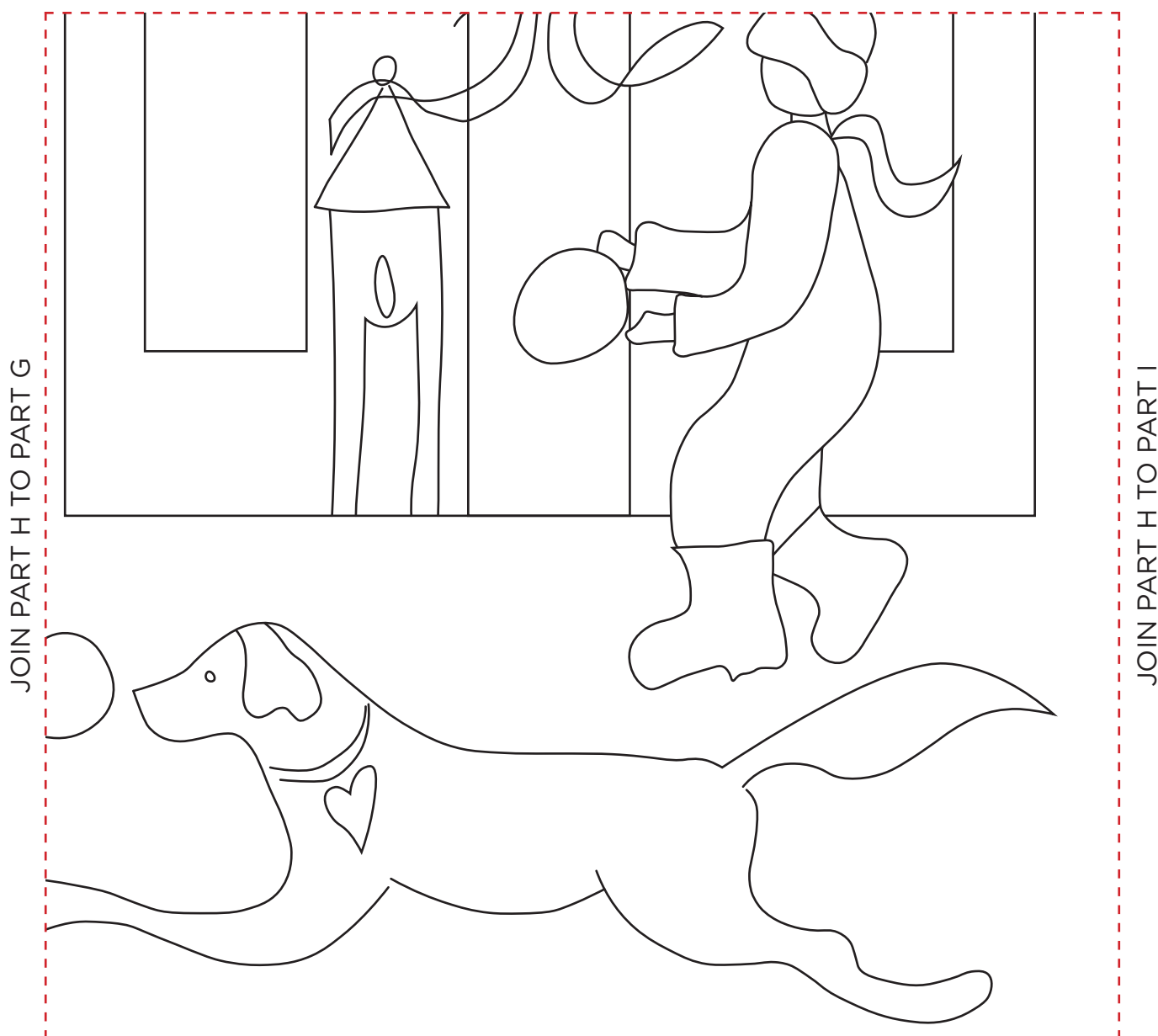
← —

ACTUAL SIZE

PLEASE NOTE: Templates DO NOT include seam allowances.

PART H

JOIN PART H TO PART E



When printed  
at the correct  
size, this box  
will measure  
1in / 26mm  
square

# CHARLIE'S WINTER WONDERLAND

Jo Colwill page 54

## APPLIQUÉ TEMPLATES



ACTUAL SIZE

PLEASE NOTE: Templates DO NOT include seam allowances.

PART I

JOIN PART I TO PART F

JOIN PART I TO PART H



When printed  
at the correct  
size, this box  
will measure  
1in / 26mm  
square

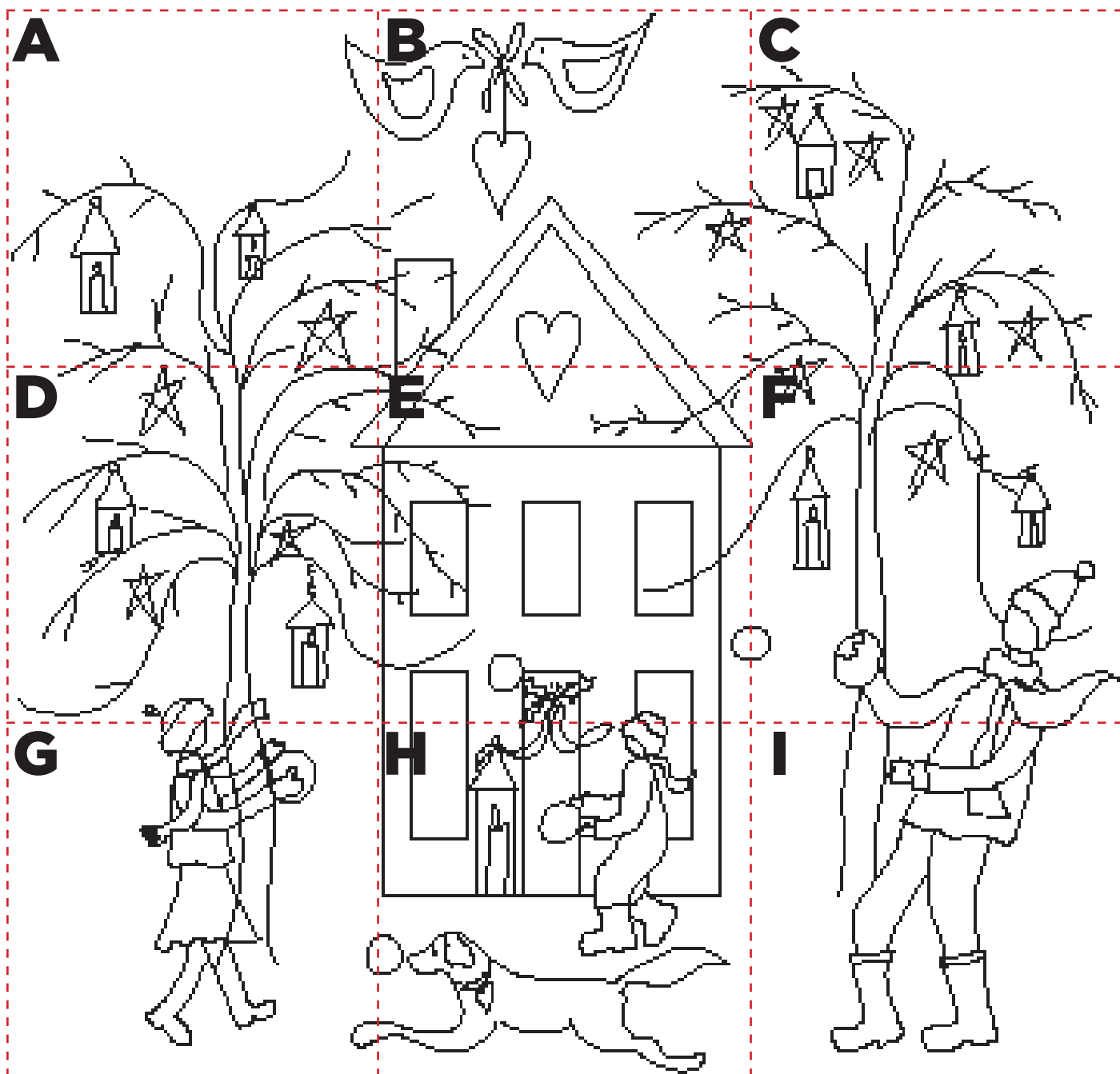
# CHARLIE'S WINTER WONDERLAND

Jo Colwill page 54

## APPLIQUÉ TEMPLATE PLAN

ACTUAL SIZE

PLEASE NOTE: Plan DOES NOT include seam allowances.



When printed  
at the correct  
size, this box  
will measure  
1in / 26mm  
square

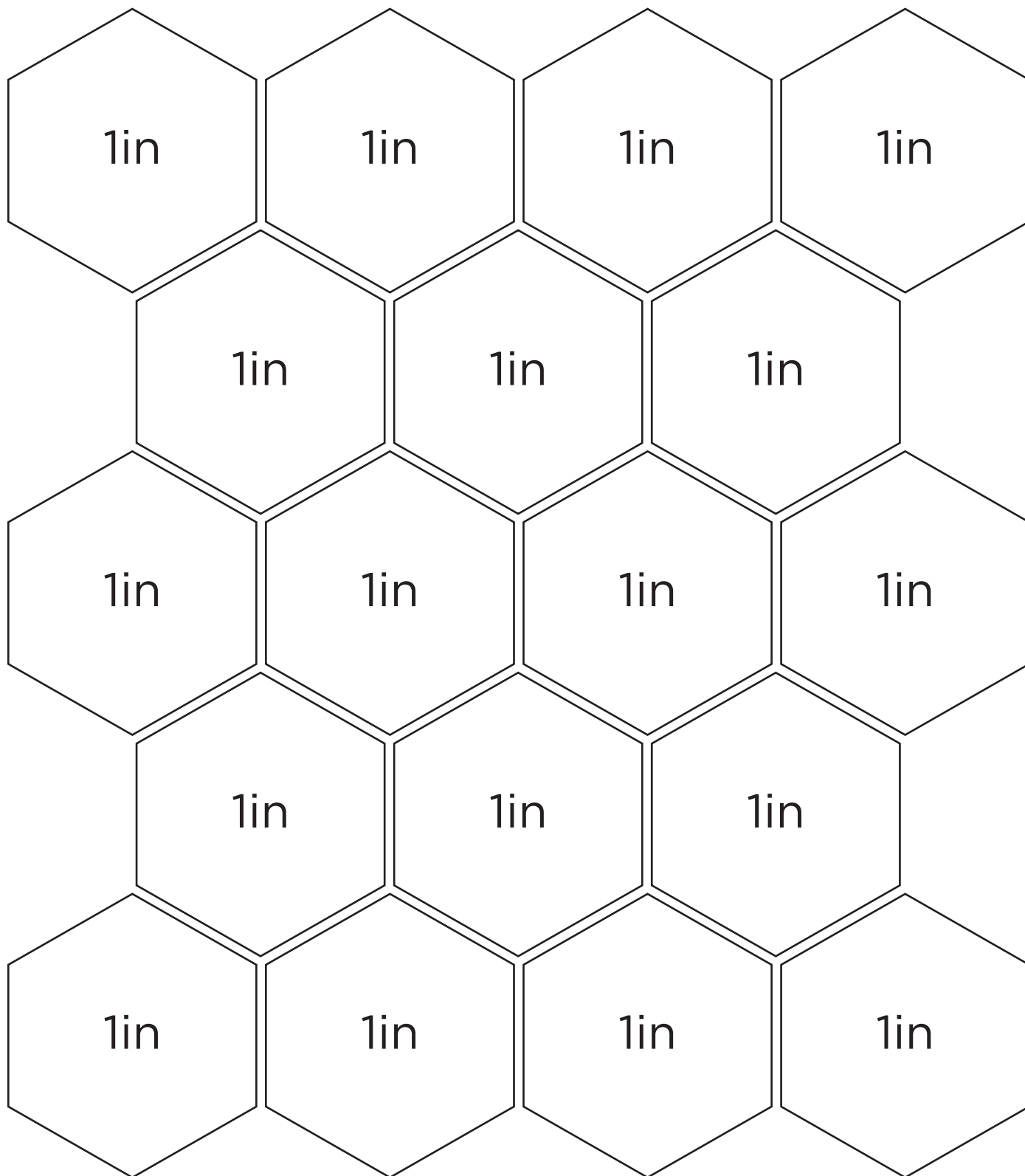
# CHARLIE'S WINTER WONDERLAND

Jo Colwill page 54

## EPP HEXAGONS

ACTUAL SIZE

PLEASE NOTE: Templates DO NOT include seam allowances.





# TRY 6 ISSUES FOR £12\*

## WHEN YOU SUBSCRIBE TODAY!



**TODAY'S QUILTER** – your favourite magazine with  
a fresh take on traditional quilting

—★—  
**PROJECTS** by stars of the quilt world

—★—  
**BEAUTIFUL PHOTOGRAPHY** that showcases stunning quilt creations

*Subscribe online, it's quick and easy!*

Visit [www.buysubscriptions.com/TQHA23](http://www.buysubscriptions.com/TQHA23)

or call **03330 162 154<sup>†</sup>** QUOTE CODE **TQHA23**

Lines are open 8am-6pm weekdays and 9am-1pm Saturday (orders only on Saturday)

\*All savings are calculated as a percentage of Basic Annual Rate. The UK Basic annual rate is £91.87, which includes event issues (issues charged higher than standard cover price) published in a 12 month period. Your subscription will start with the next available issue. This offer is a special introductory offer for new UK print subscribers paying by direct debit only. If you cancel within 2 weeks of receiving your 5th issue you will pay no more than £12. Otherwise your subscription will continue at £30.49 every 6 issues. Full details of the Direct Debit guarantee are available upon request. **Offer ends: 31st December 2023.** <sup>†</sup>UK calls will cost the same as other standard fixed line numbers (starting 01 or 02) and are included as part of any inclusive or free minutes allowances (if offered by your phone tariff). Outside of free call packages call charges from mobile phones will cost between 3p and 55p per minute.