

Chinese New Year

✦ Cross stitch in two strands

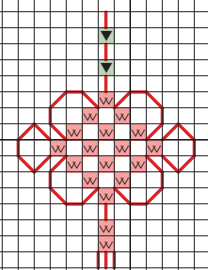
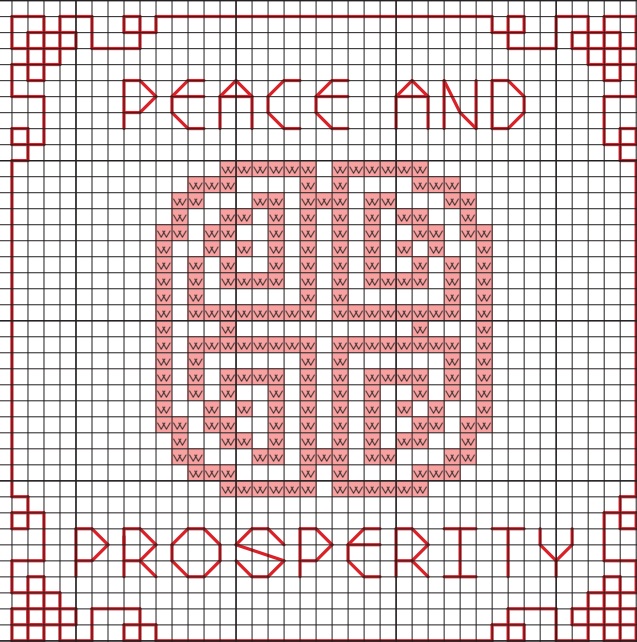
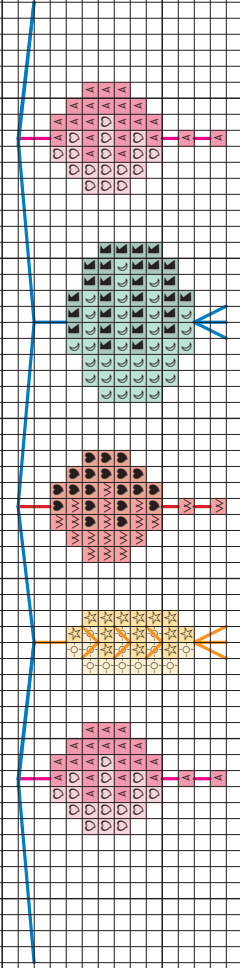
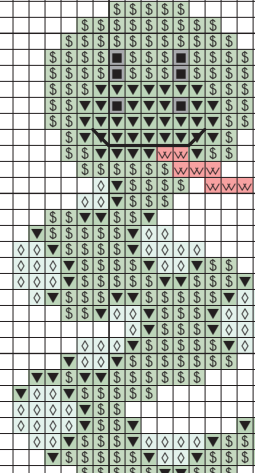
	DMC	Anchor	Madeira
∩	B5200	1	2401
s	ecru	926	2404
⦿	168	1096	1708
⦿	169	1040	1707
■	310	403	2400
♥	321	9046	510
♣	434	310	2009
x	436	1045	2011
▼	562	210	1205
§	563	208	1207
◇	564	206	1208
⦿	600	63	703
A	602	57	702
♥	604	55	614
⦿	741	304	202
☆	743	302	113
☼	745	300	111
Q	842	1080	1910
☾	959	186	1114
⋈	3770	1009	2314
W	3801	1098	411
⬛	3848	1074	1108

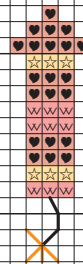
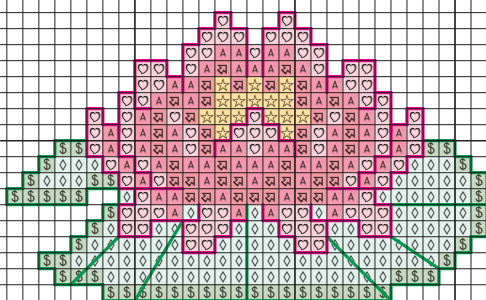
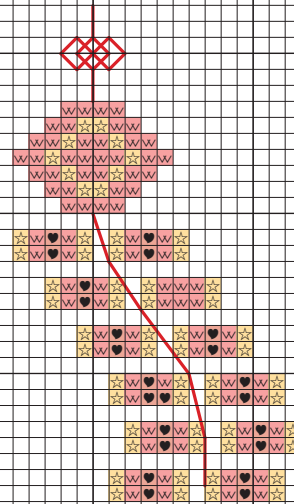
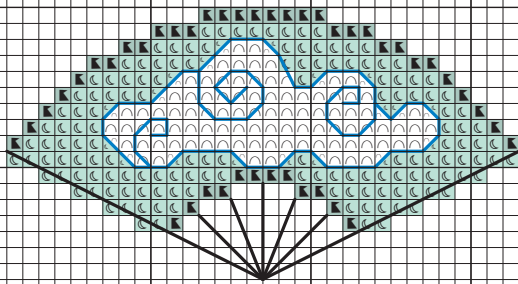
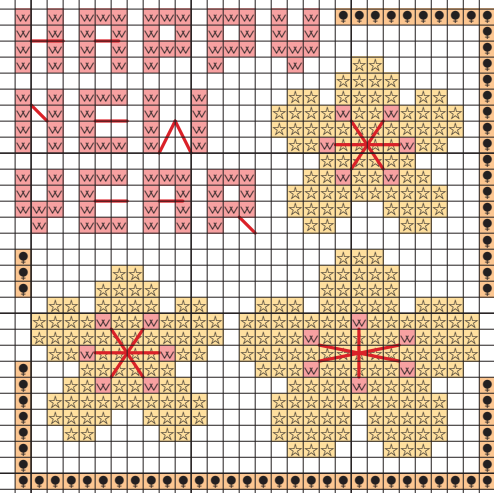
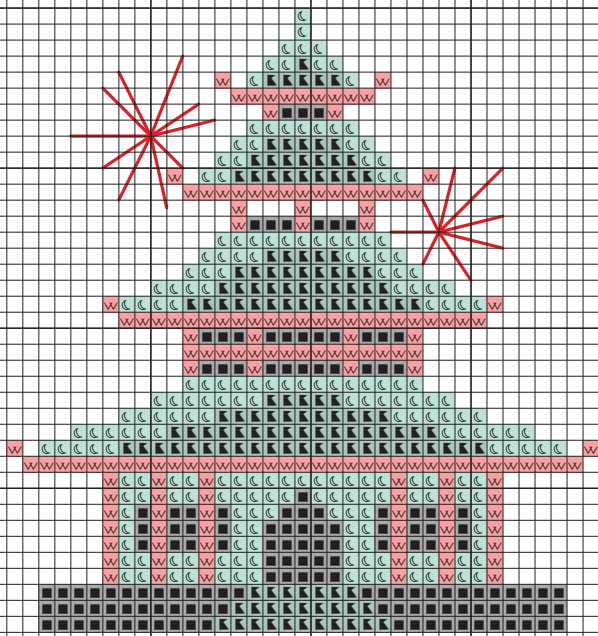
✦ Backstitch in one strand

—	310	403	2400
—	434	310	2009
—	562	210	1205
—	600	63	703
—	741	304	202
—	3801	1098	411
—	3848	1074	1108

✦ Whole stitches only

Max. stitch count 39 (h) x 60 (w)
Design area on 14-count fabric
7x11cm (2¾x4¼in)





ABCDEFGHIJKLMNOPQRSTUVWXYZ

These patterns are by Cheryl McKinnon (@tinymodernist) for *Cross Stitch Crazy* magazine 224. For personal use only, not for distribution. For more great charts, subscribe to The World of Cross Stitching at www.ourmediashop.com/the-world-of-cross-stitching-magazine

