

# TEMPLATES

Here are the full-size templates for the projects in issue 119

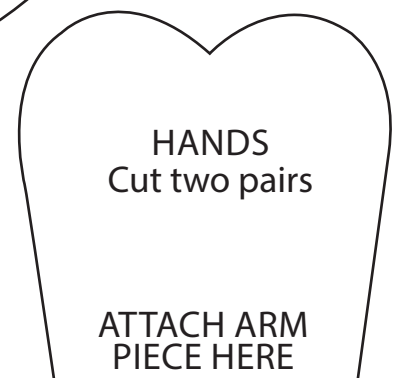
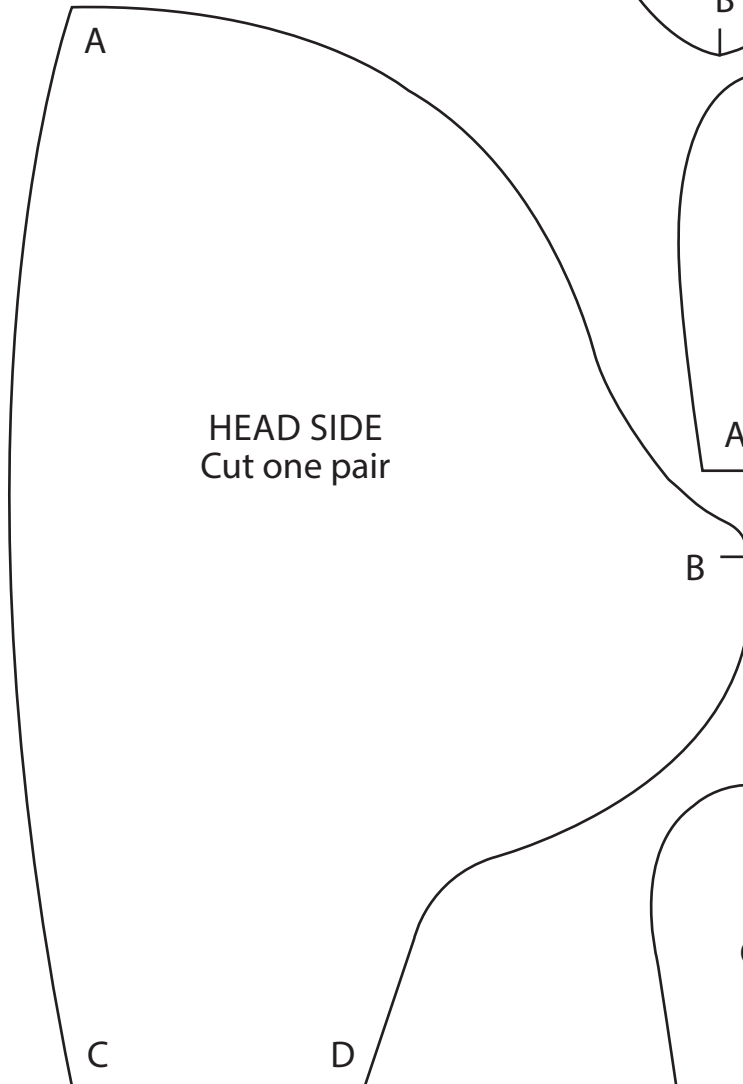
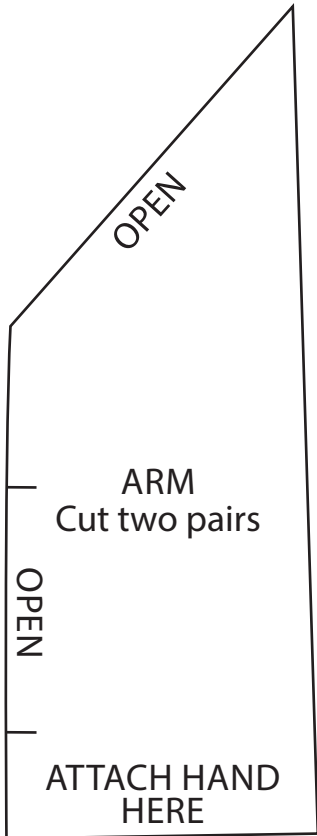
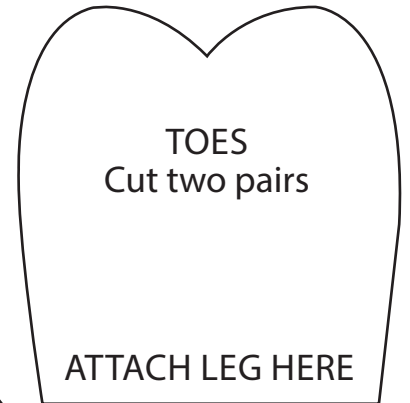
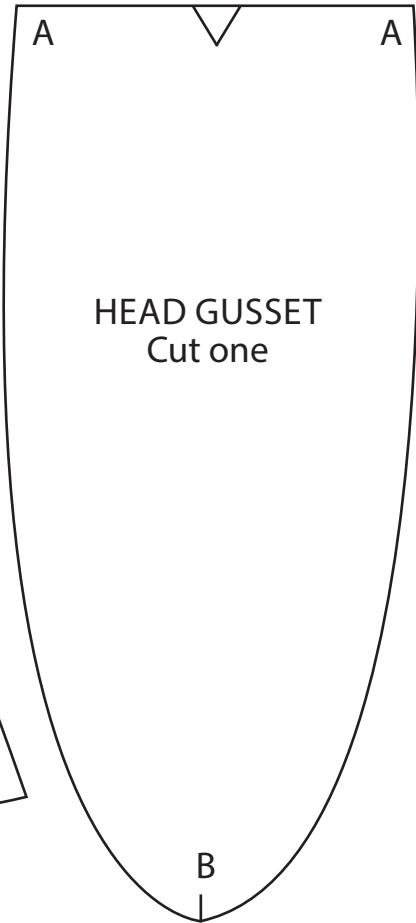
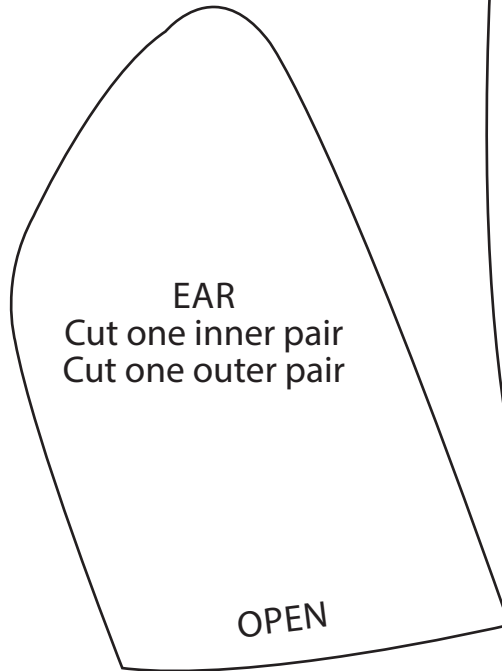
ALPACA

PAGE 69

ACTUAL SIZE



*All templates are available to download from gathered.how. Scan the code to go straight to the templates page!*



TEMPLATES

FRONT

ALPACA  
PAGE 69  
ACTUAL SIZE

NECK EDGE

PLACE ON FOLD OF FABRIC

JUMPER  
Cut one pair

ARM EDGE

PLACE ON FOLD OF FABRIC

HAIR  
Cut one outer  
Cut one lining

BACK

CENTRE SEAM

HEAD BACK  
Cut one pair

E

C

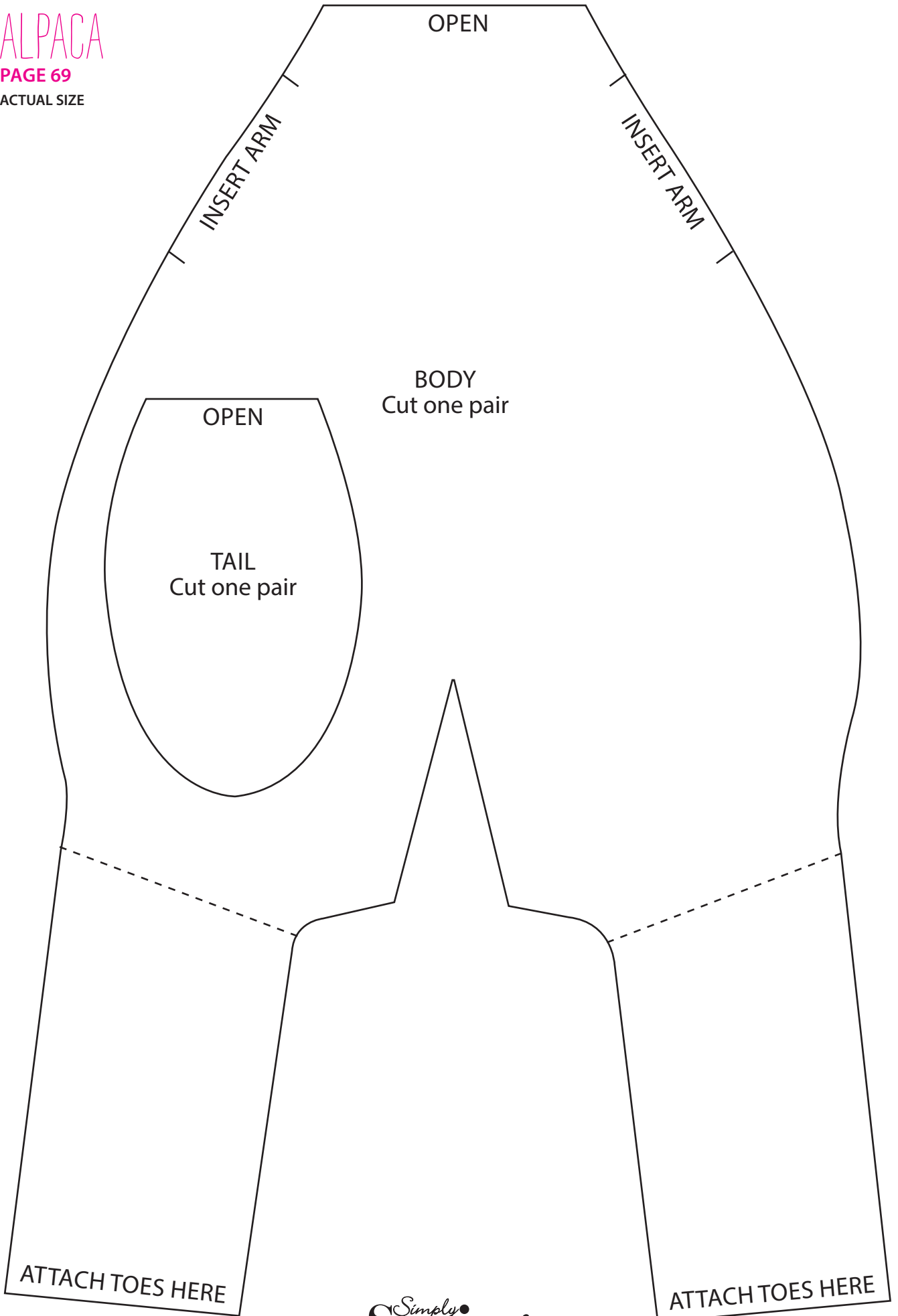
A

—→ TEMPLATES ←—

ALPACA

PAGE 69

ACTUAL SIZE



# DENIM JACKET

PAGE 20

PART A - JOIN TO PART B

ACTUAL SIZE



ATTACH PART B HERE

# DENIM JACKET

PAGE 20

PART B - JOIN TO PART A

ACTUAL SIZE

ATTACH PART A HERE

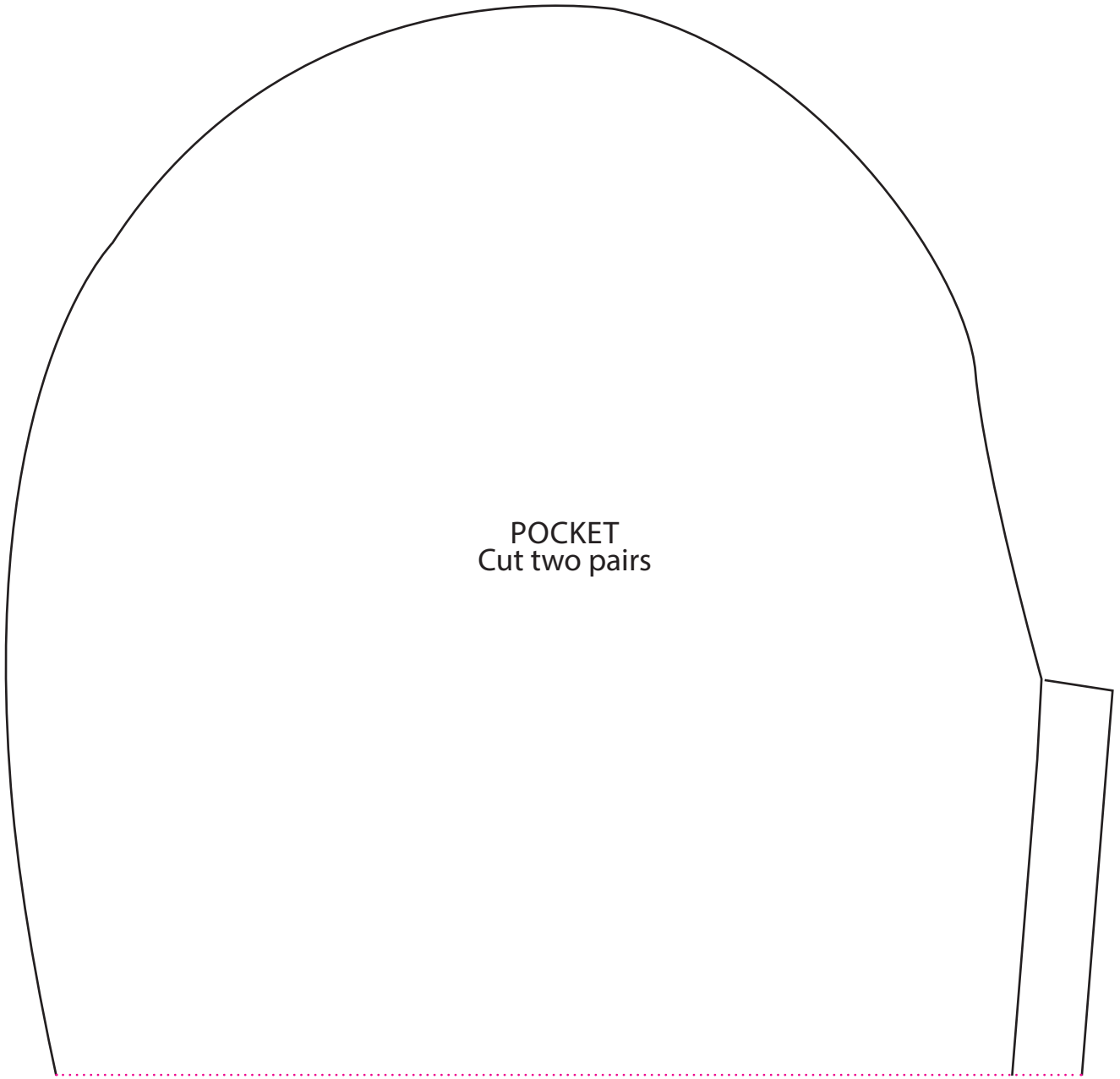


# SELF DRAFT TROUSERS

**PAGE 52**

**PART A - JOIN TO PART B**

**ACTUAL SIZE**



POCKET  
Cut two pairs

ATTACH PART B HERE

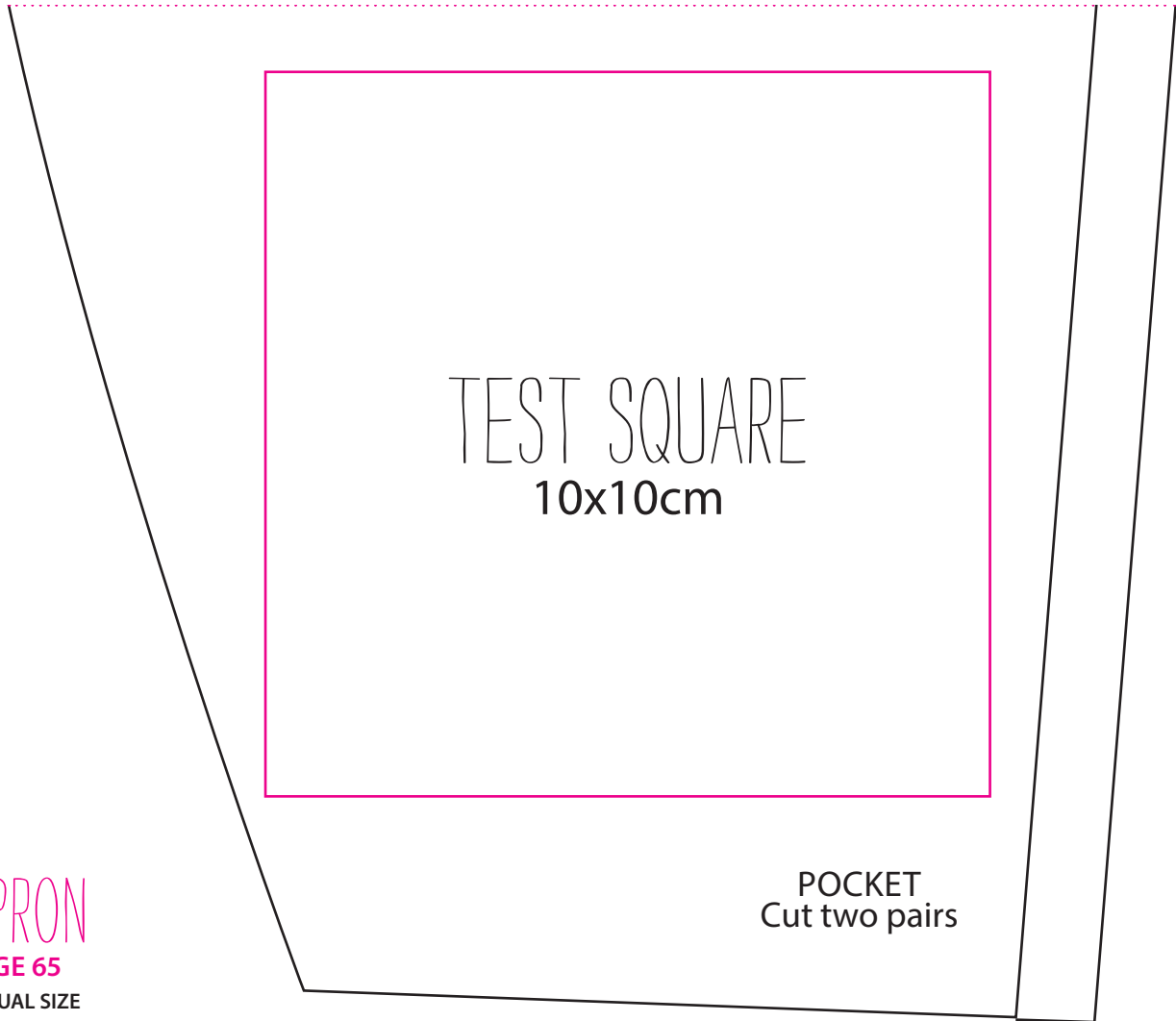
# SELF DRAFT TROUSERS

PAGE 52

PART B - JOIN TO PART A

ACTUAL SIZE

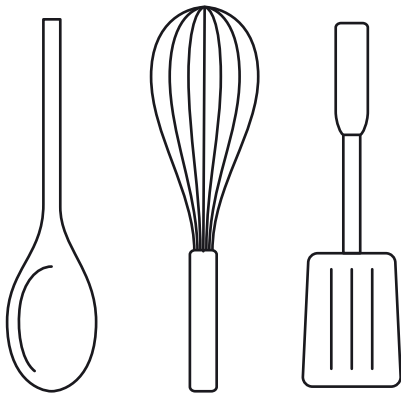
ATTACH PART A HERE



# APRON

PAGE 65

ACTUAL SIZE



Thank you for making these projects from *Simply Sewing*.

The copyright for these templates belongs to the designer of the project.

They work hard to create projects for you to enjoy, so please don't re-sell or distribute their work without permission. Please do not make any part of the templates or instructions available to others through your website or a third party, or copy it multiple times without our permission. Copyright law protects creative work and unauthorised copying is illegal.

We appreciate your help.