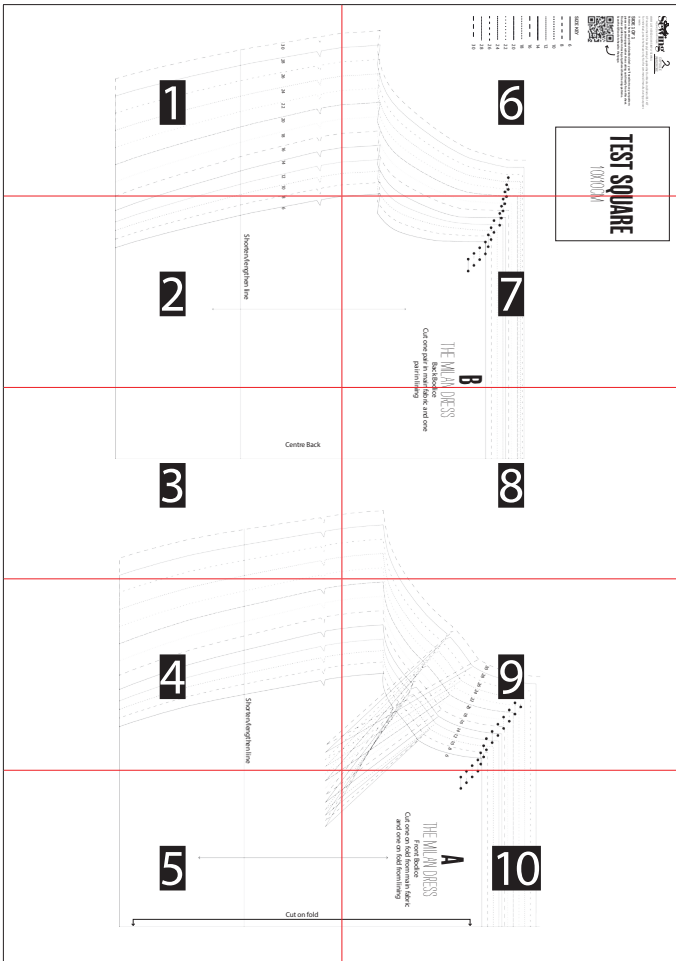
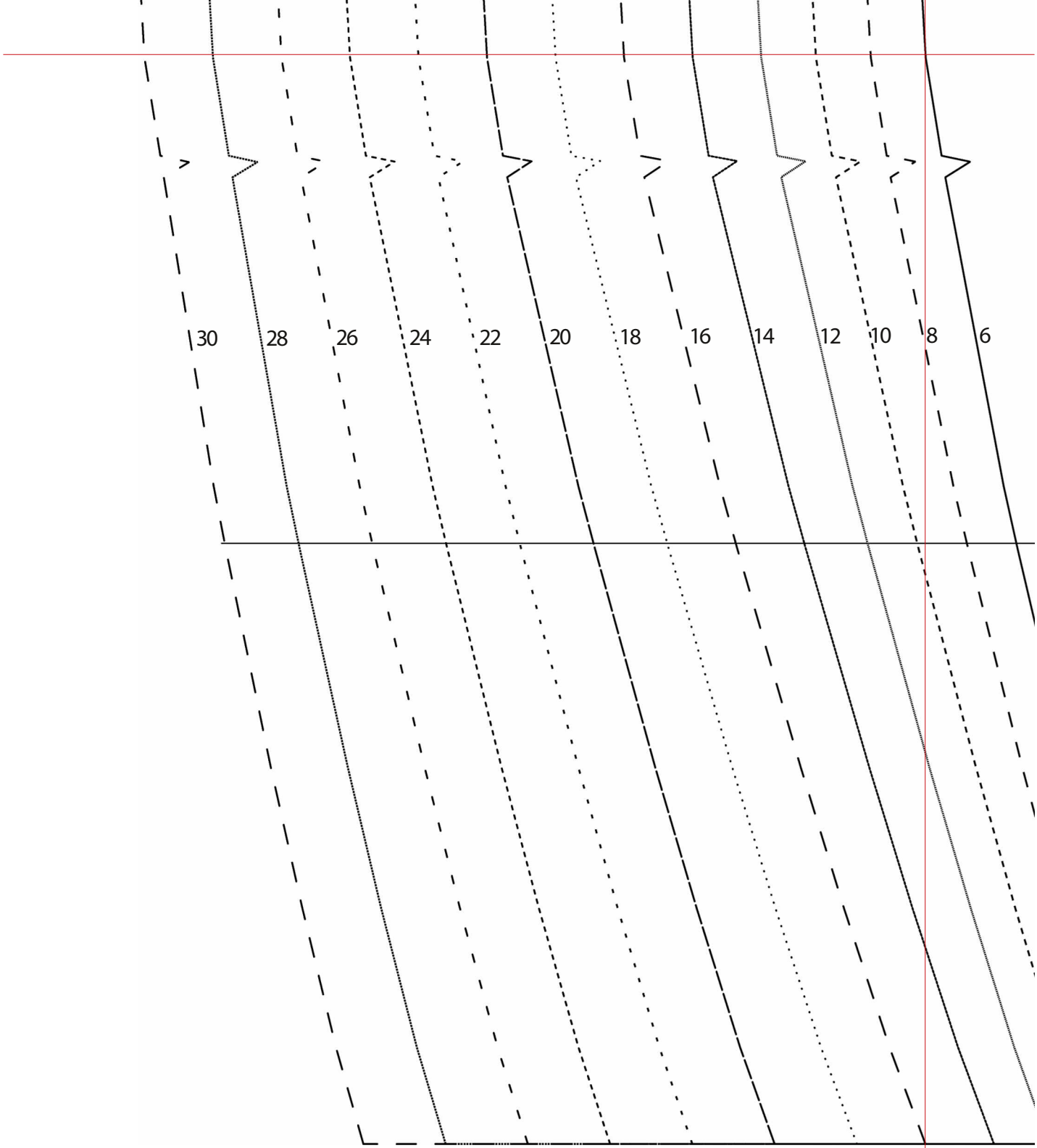
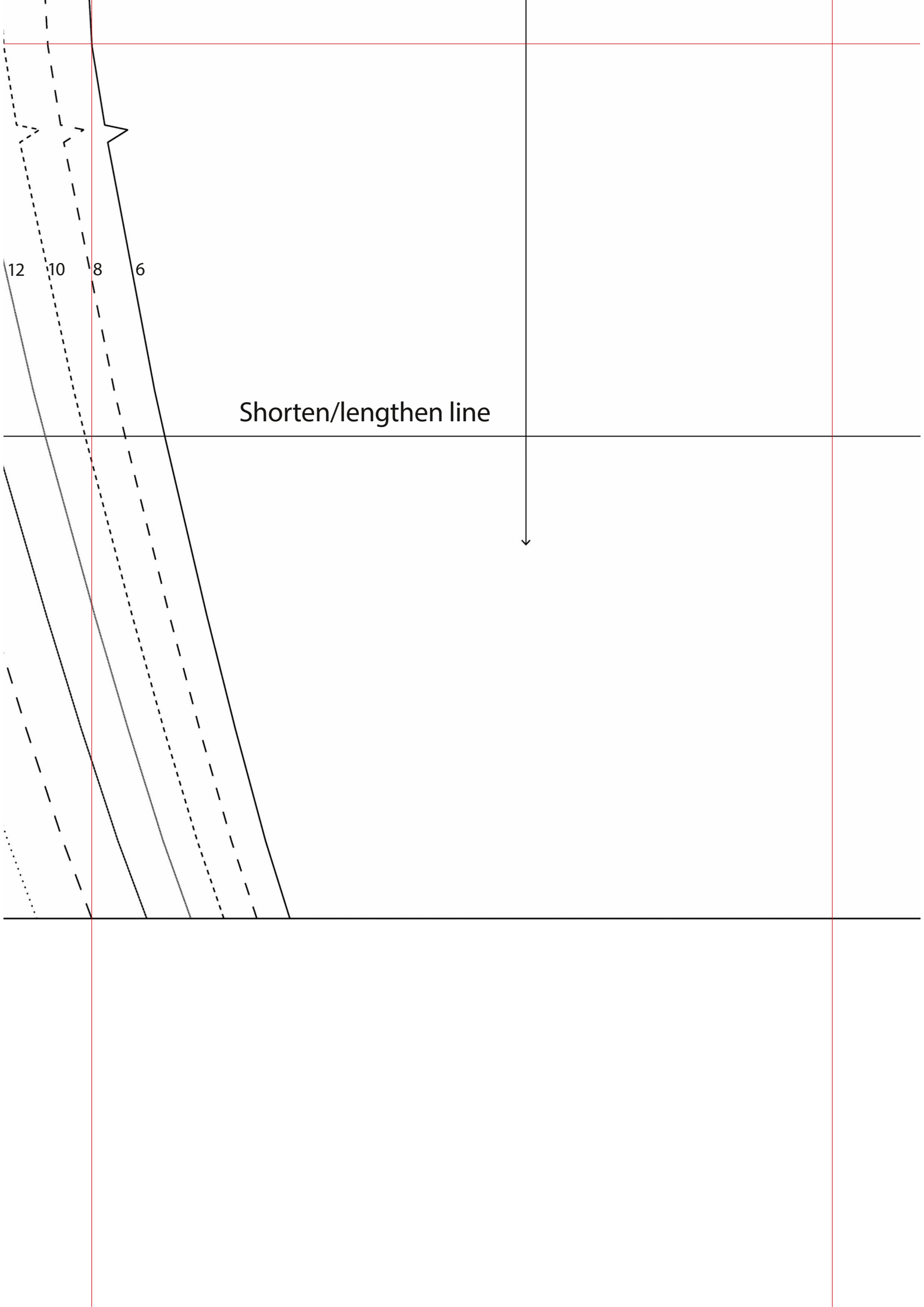


HOW TO PRINT THIS PATTERN

Print out the following pages on A4 paper at 100%.
Overlap the red lines and tape the sheets in place using the guide below.



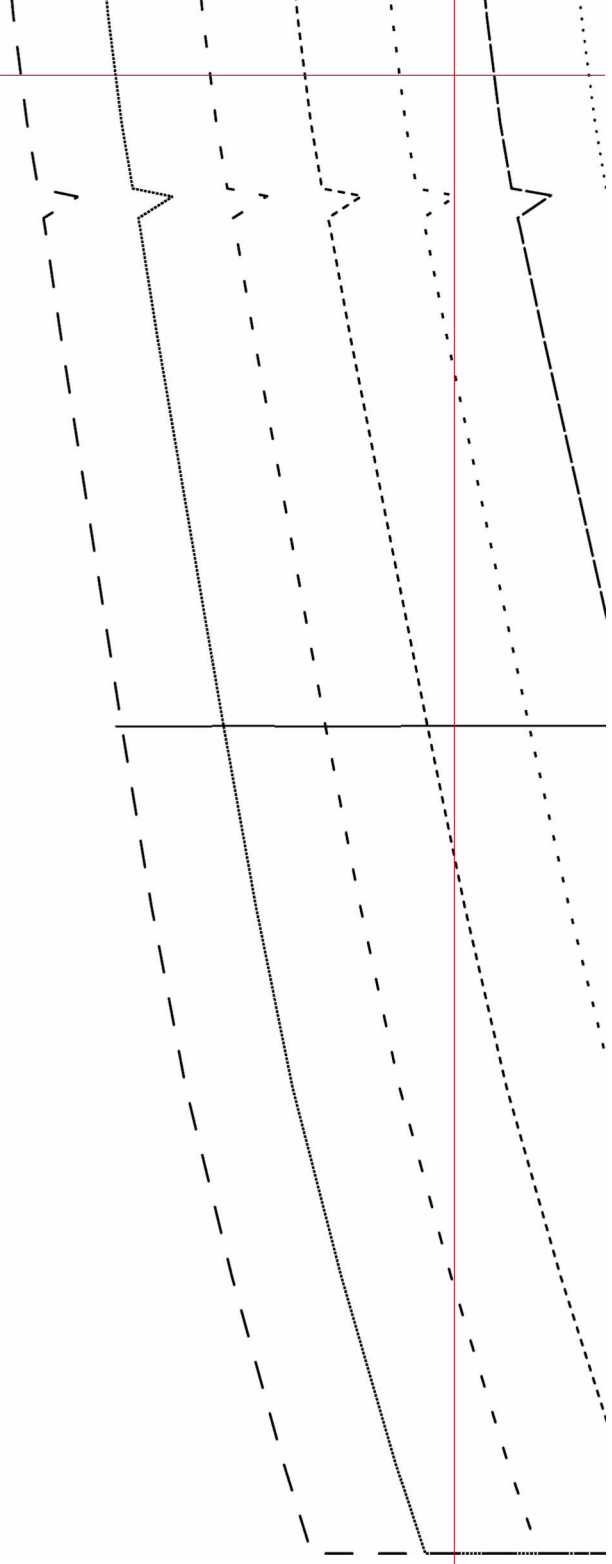


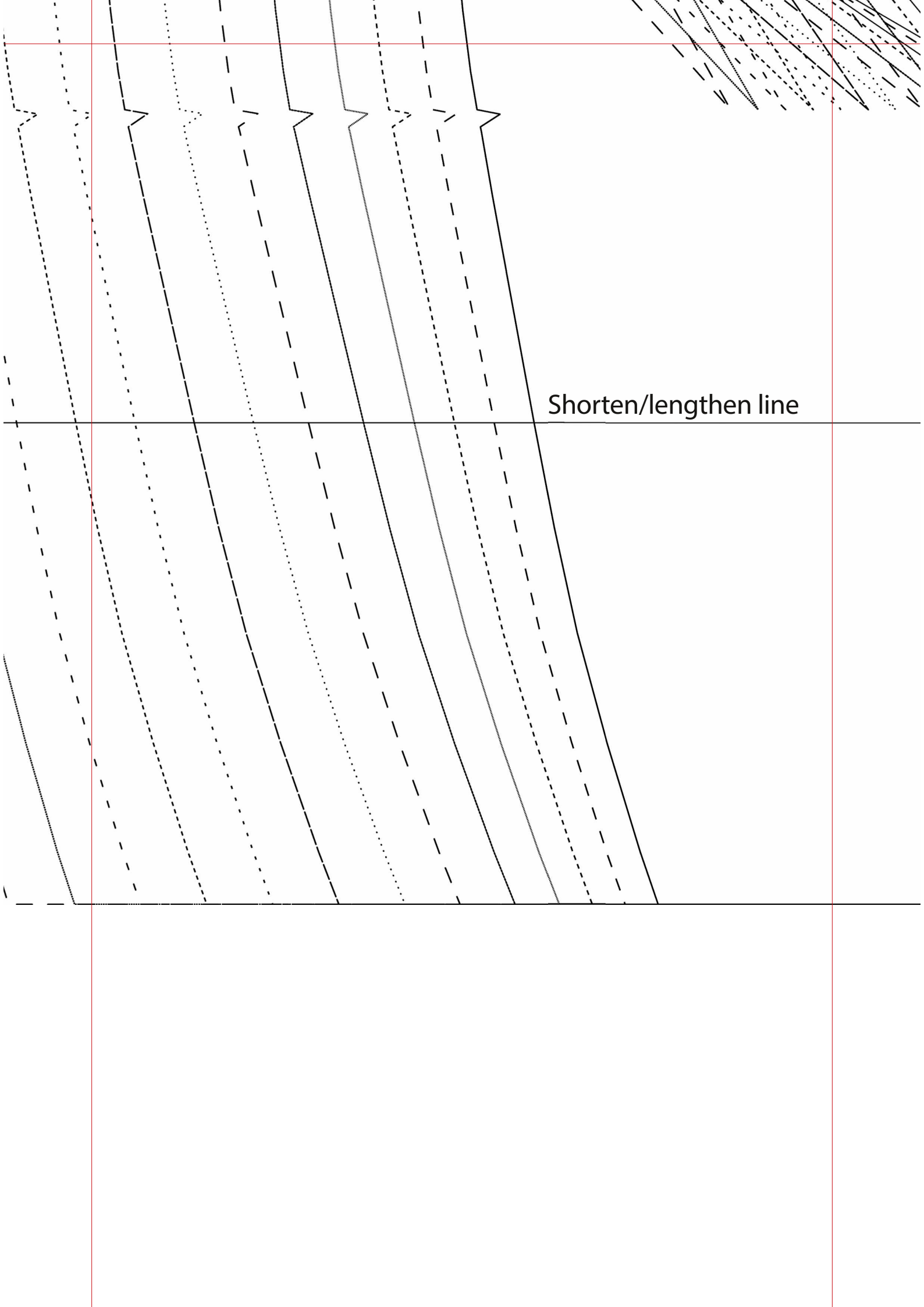


Shorten/lengthen line

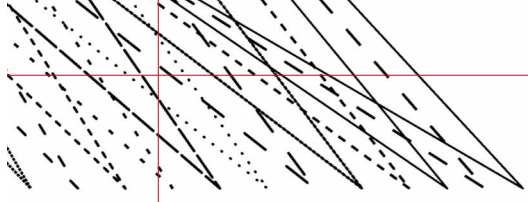
12 10 8 6

Centre Back





Shorten/lengthen line



1 line

Cut on fold



SIDE 1 OF 1

Pattern sheets are printed double sided – you'll need to trace your pattern pieces onto pattern paper rather than cutting out directly from this sheet.
Find our guide to pattern tracing at gathered.how/tracing-patterns.
Scan the QR code to head to that page.

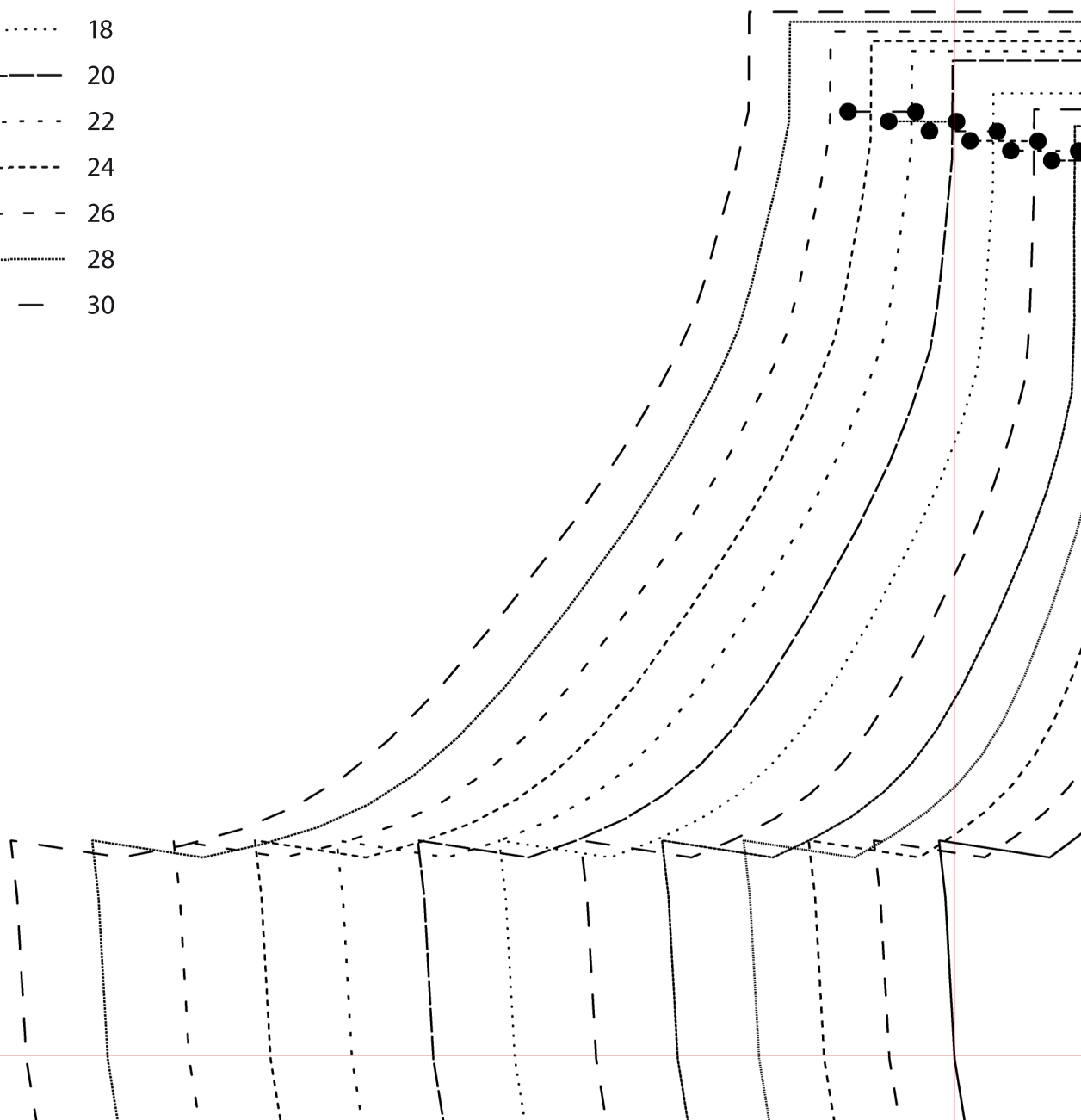


SIZE KEY

—————	6
- - - - -	8
.....	10
.....	12
—————	14
- - - - -	16
.....	18
—————	20
- - - - -	22
.....	24
- - - - -	26
.....	28
- - - - -	30

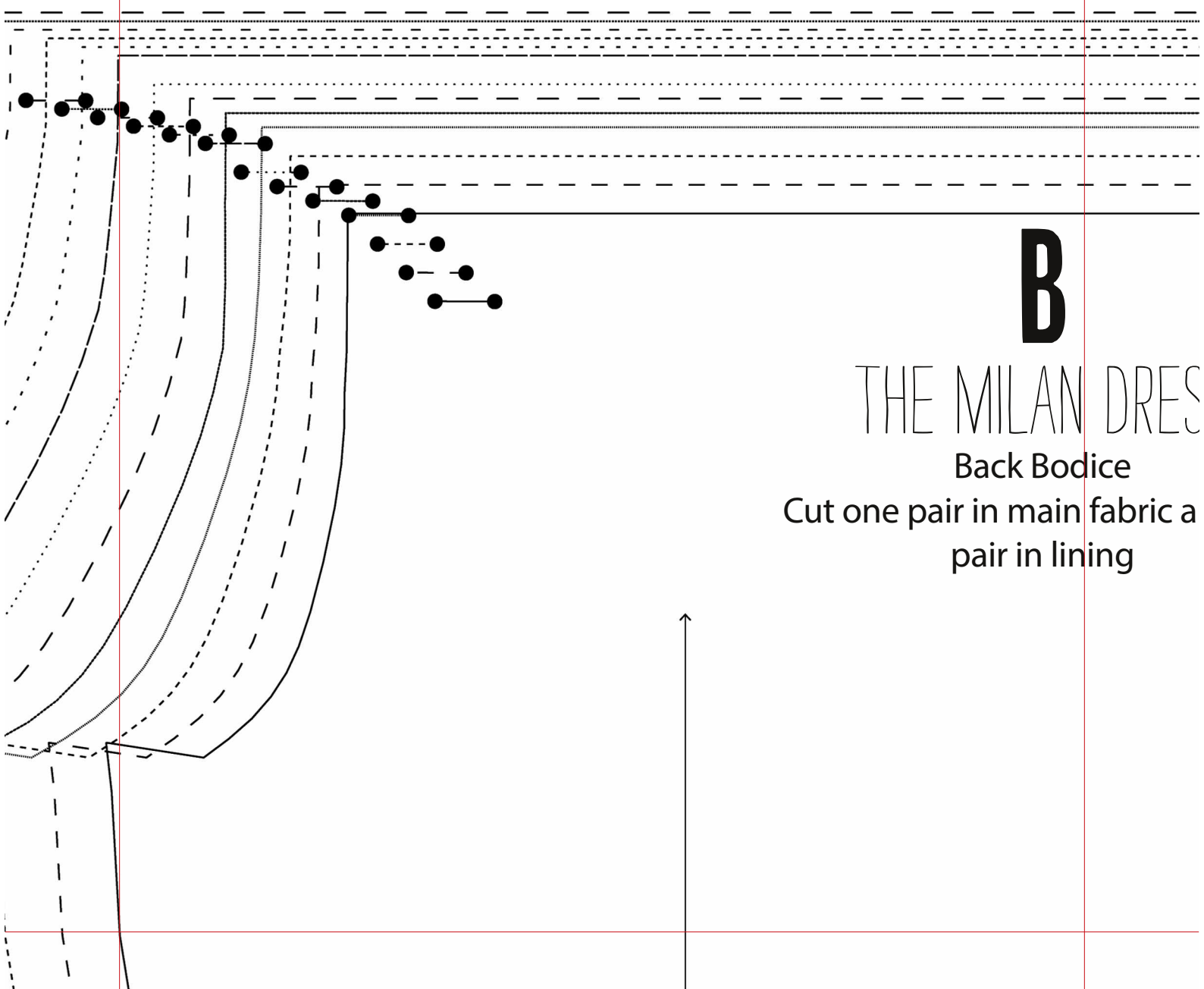
TEST SQUAI

10X10CM



SQUARE

100X100CM

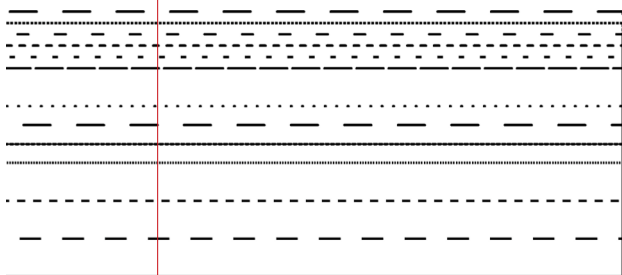


B

THE MILAN DRESS

Back Bodice

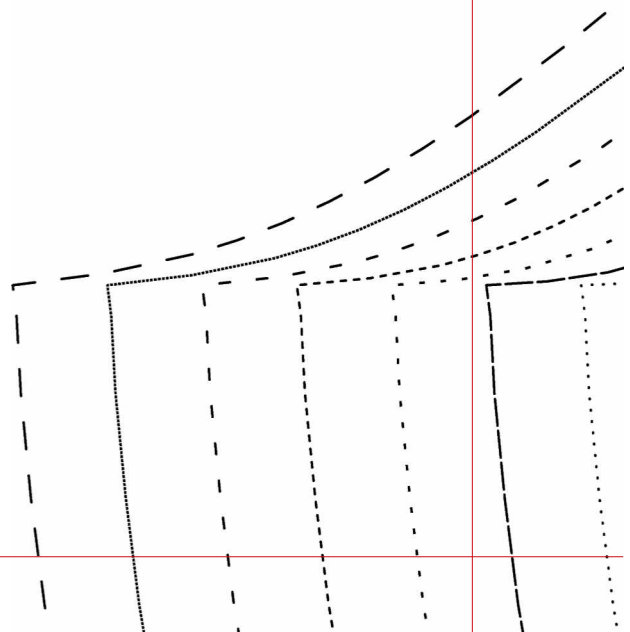
Cut one pair in main fabric a
pair in lining

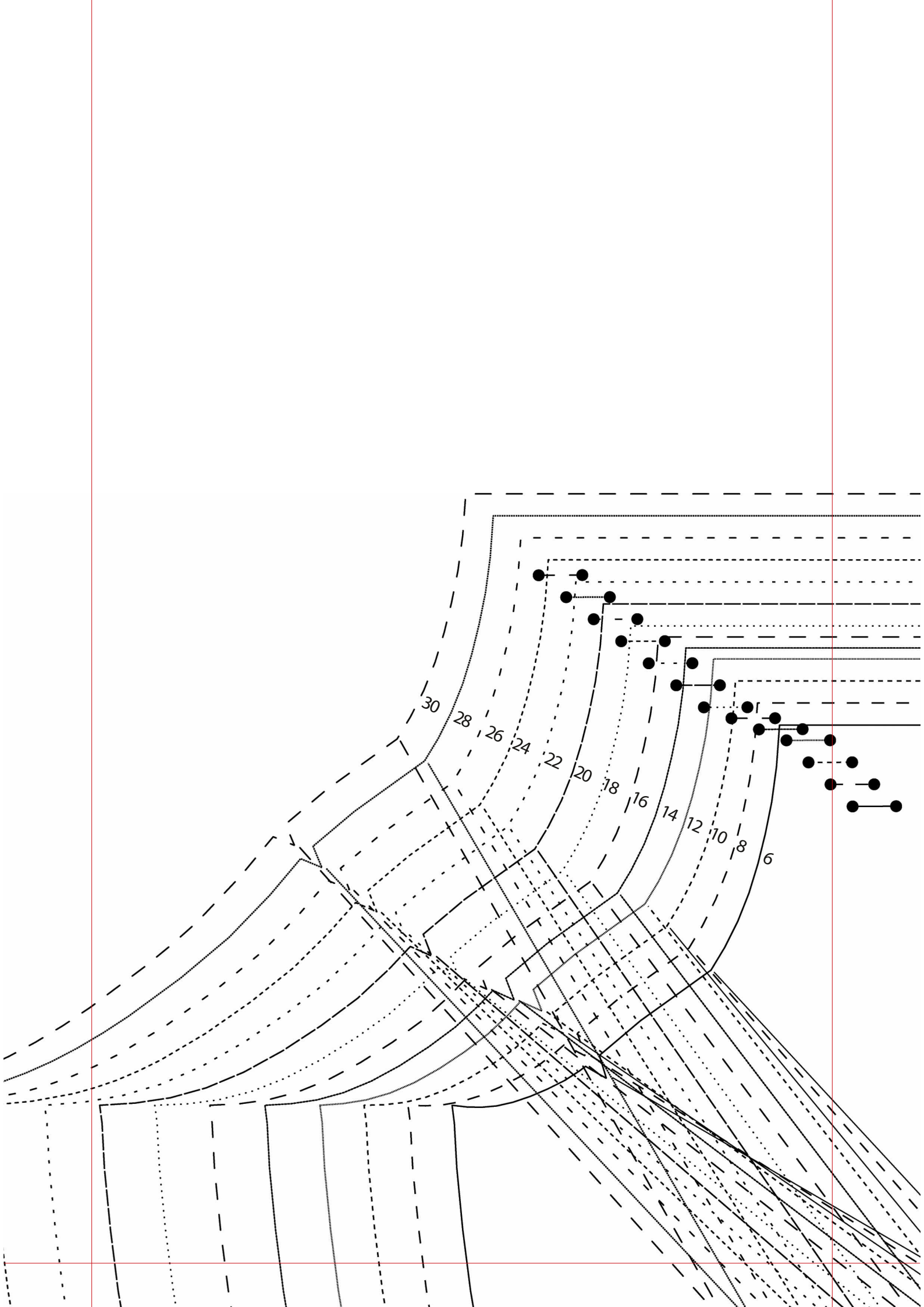


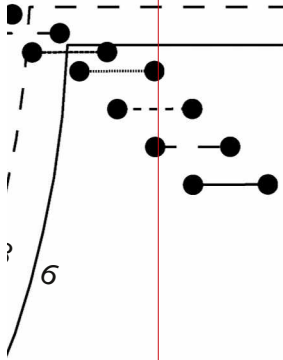
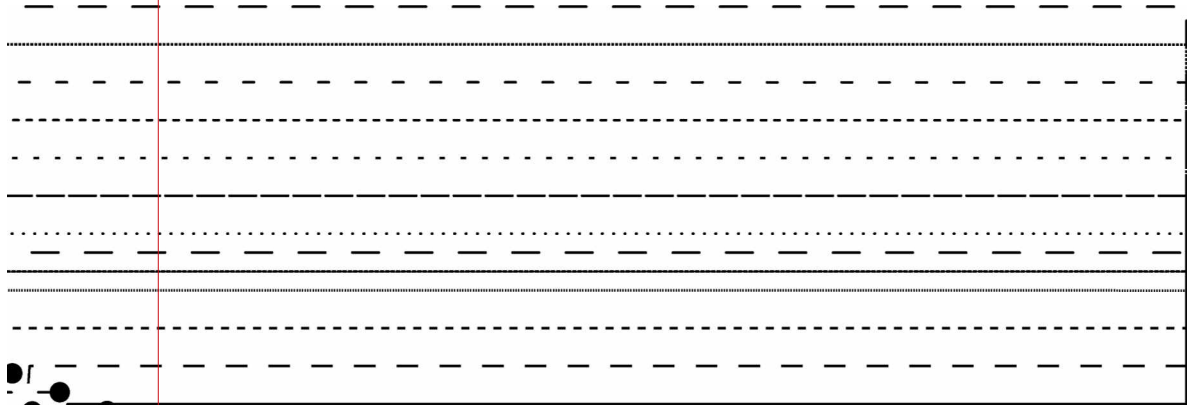
B

MILAN DRESS

Back Bodice
in main fabric and one
air in lining







A

THE MILAN DRESS

Front Bodice

Cut one on fold from main fabric
and one on fold from lining

