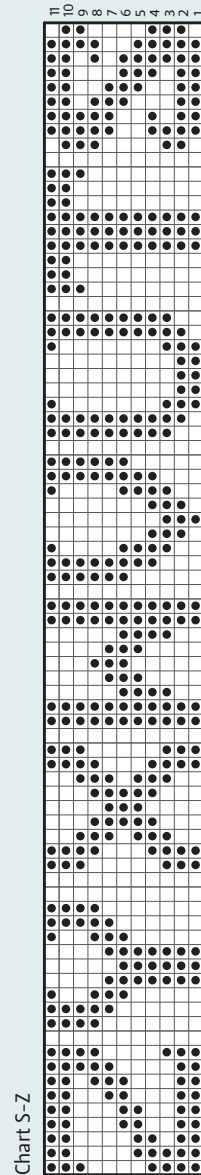
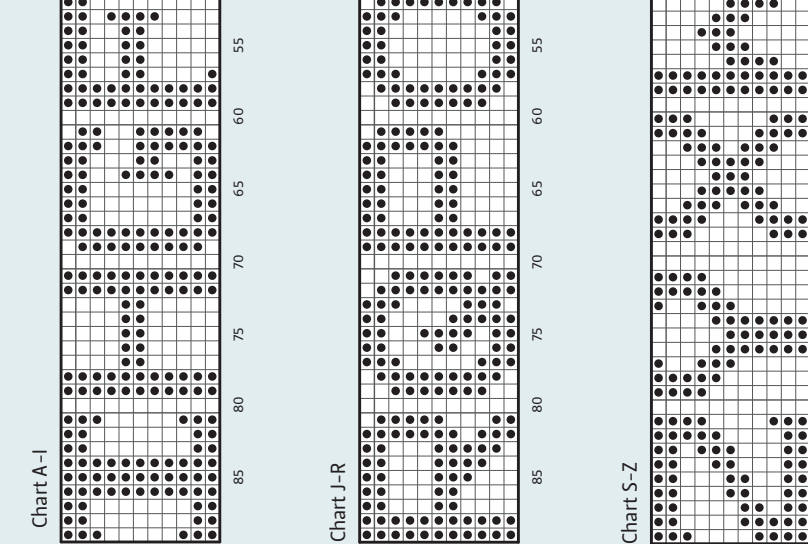
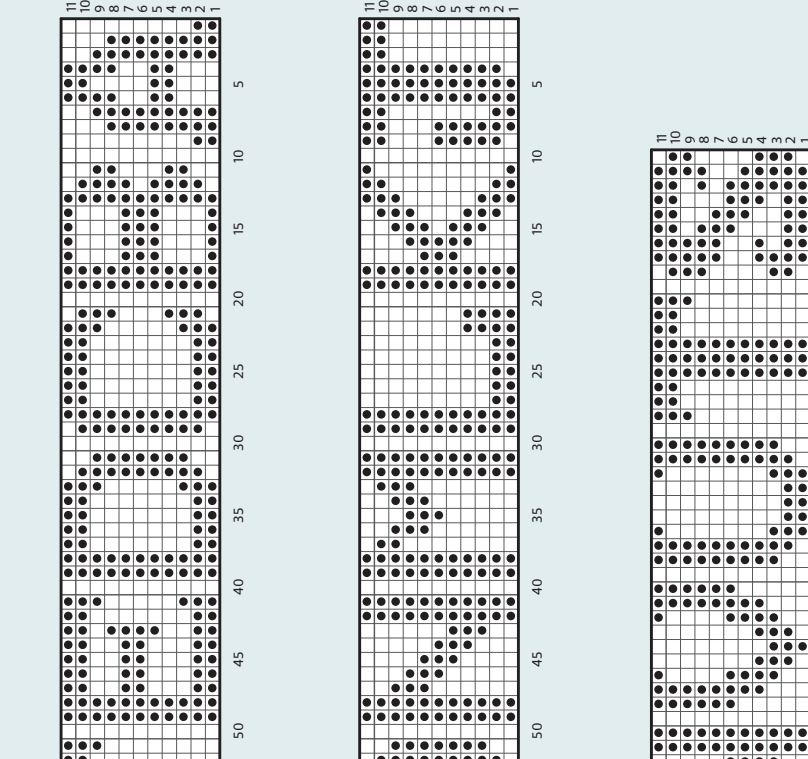
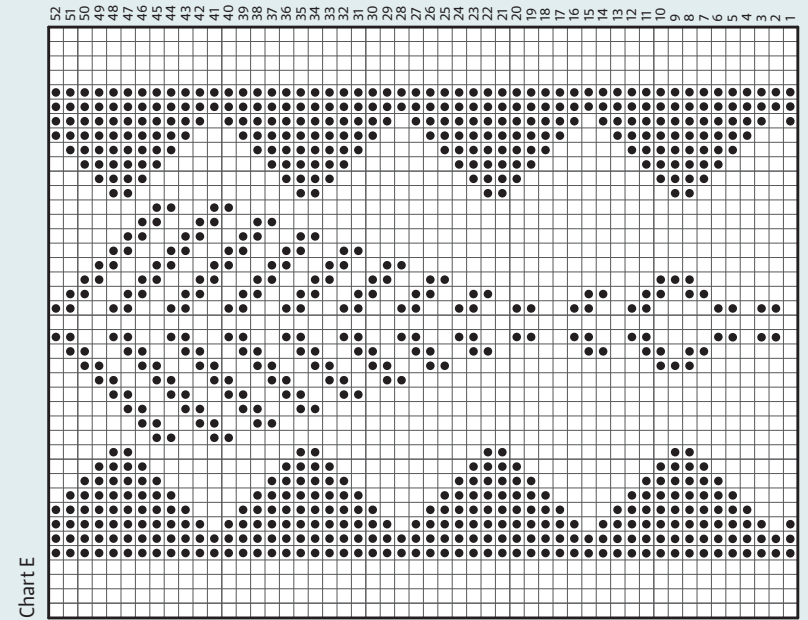
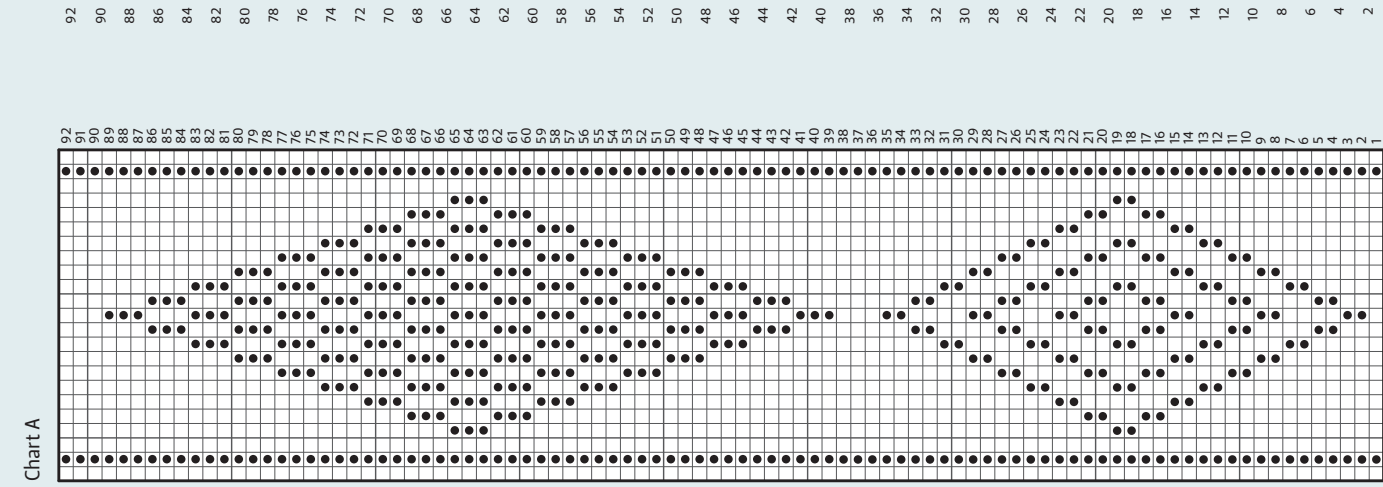
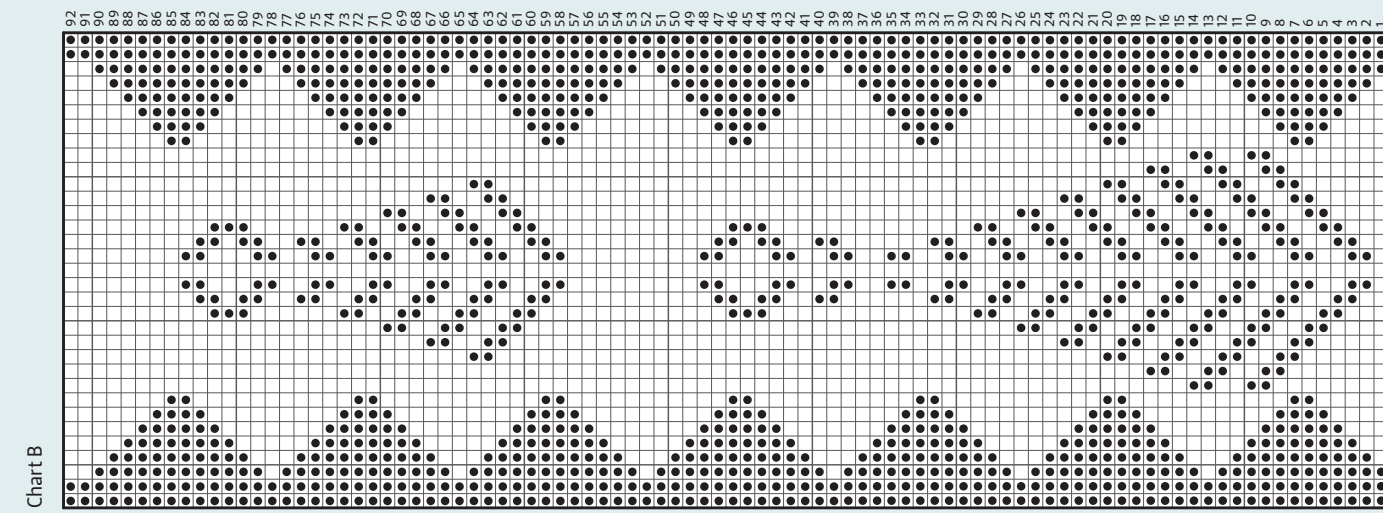


KEY
 □ K on RS; P on WS
 ● P on RS; K on WS
 ▨ C2B
 □ Repeat



SPOTLIGHT
Penelope Hemingway
 8-PAGE PULLOUT



Edgings can be worked in a contrast colour if desired

Changing to yarn B after 7cm, or where preferred for 2-colour version, Cast off in rib.

RIGHT SLEEVE
 Return 23 (25:27:27:29:31:31) Right underarm gusset sts to your needle, pm, pick up but do not knit 34 (36:40:44:46:48:50) sts up Right Back armhole (approx 1 st for every 2 rows), pm, return 41 shoulder saddle sts to needle, pm, pick up but do not knit 34 (36:40:44:46:48:50) sts down Right Front armhole (approx 1 st for every 2 rows), pm and prepare to work in the rnd. 132 (138:148:156:162:168:172) sts.

Work as for Left Sleeve from **.

NECKBAND
 You are going to set up the neck gussets, one on each side of the neck over the centre of the shoulder saddle. They will be centred on the central stitch of the shoulder saddle (stitch 21 of the 41 shoulder saddle sts). Using circular needles and starting at the Right Back neck, return 51 (53:55:57:61:63:66) Back Neck sts to needle, pm, unravel provisional cast-on for Shoulder Saddle sts and place 41 sts on needle, pm and prepare to work in the rnd.

184 (188:192:196:204:208:214) sts.
 Knit 1 rnd.
 Purl 1 rnd.
NECK GUSSETS
Next rnd: *K to mrk, remove mrk, K14 (13:13:13:14:12:11), pm, P1, K11 (13:13:13:11:15:17), P1, pm, K14 (13:13:13:14:12:11), remove mrk; rep from * once more, but do not remove mrk at beg of rnd.
 The next rnd of decreases sets 2x2 rib, with neck gussets at each side.
Size 1 only
Next rnd: K2tog, K1, P2, (K2, P2) to mrk, slm, P1, K2tog, K to 3 sts before mrk, K2tog, P1, slm, P2tog, P1, (K2, P2) to 5 sts before mrk, K2, P2tog, P1, slm, P1, K2tog, K to 3 sts before mrk, K2tog, P1, slm, P2tog, P1, (K2, P2) to end. 206 sts.
All sizes
Next rnd: *Work in 2x2 rib to mrk, slm, P1, K to 1 st before mrk, P1, slm; rep from * once more.
Dec rnd: *Work in 2x2 rib to mrk, slm, P1, K2tog, K to 3 sts before mrk, K2tog, P1, slm; rep from * once more. 4 neck gusset sts dec'd.
 Rep last 2 rnds another 2 (3:3:3:2:4:5) times.
 166 (162:166:170:182:282:282) sts, with 5 sts in each Neck Gusset.
Sizes 1, 2, 4 and 7 only
Next rnd: *Work in 2x2 rib to mrk, slm, K3tog, K2tog - you should now have 2 sts between gusset mrks, remove mrk; rep from * to end, but do not remove beg of rnd mrk.
 160 (156:-:164:-:176) sts.
Sizes 3, 5 and 6 only
Next rnd: *Work in 2x2 rib to mrk, slm, P3tog, P2tog - you should now have 2 sts between gusset mrks, remove mrk; rep from * to end, but do not remove beg of rnd mrk.
 - (-:160:-:176:176:-) sts.
All sizes
 Cont working neckband in 2x2 rib until you have worked 18 rnds or depth of neckband as desired.
 If working the 2-colour version, change to yarn A.
 Work 1 rnd of 2x2 rib.
 Purl 1 rnd.
 Work 19 rnds in 2x2 rib.
 Cast off loosely.
 Turn under neckband and sew to inside.
FINISHING
 Weave in rem ends.
 Gently wash and block garment into shape, paying special attention to the shoulder saddles and the sleeves, and following any yarn care instructions on the ball band. ☺

Sizes 2 and 4 only
Next rnd: K2tog, K1, (P2, K2) to 3 sts before mrk, P2tog, P1, slm, P1, K2tog, K to 3 sts before mrk, K2tog, P1, slm, P2tog, P1, (K2, P2) to mrk, slm, P1, K2tog, K to 3 sts before mrk, K2tog, P1, slm, P3tog, P1, (K2, P2) to last 5 sts, K2, P2tog, P1.
 - (178:-:186:-:176) sts.
Size 3 only
Next rnd: K2tog, K1, (P2, K2) to 5 sts before mrk, P2, K2tog, K1, slm, P1, K2tog, K to 3 sts before mrk, K2tog, P1, slm, K2tog, K1, (P2, K2) to 6 sts before mrk, P2, K3tog, K1, slm, P1, K2tog, K to 3 sts before mrk, K2tog, P1, slm, K2tog, K1, P2, (K2, P2) to end. 182 sts.
Size 5 only
Next rnd: K2tog, K1, (P2, K2) to mrk, slm, P1, K2tog, K to 3 sts before mrk, K2tog, P1, slm, K2tog, K1, P2, (K2, P2) to 4 sts before mrk, K3tog, K1, slm, P1, K2tog, K to 3 sts before mrk, K2tog, P1, slm, K3tog, K1, P2, (K2, P2) to end. 194 sts.
Size 6 only
Next rnd: K2tog, K1, (P2, K2) to mrk, slm, P1, K2tog, K to 3 sts before mrk, K2tog, P1, slm, K2tog, K1, (P2, K2) to mrk, slm, P1, K2tog, K to 3 sts before mrk, K2tog, P1, slm, (K2, P2) to end. 202 sts.

