

HOW TO PRINT THIS PATTERN

Print out the following pages on A4 paper at 100%.
Overlap the red lines and tape the sheets in place using the guide below.

2

3

4

5

6

7

8

9

10

11

Styling

THE CLOVER TOP is a simple, elegant top that can be styled in many ways. It is perfect for a casual look or a more formal occasion. The top is made of a soft, comfortable fabric and features a unique collar and sleeve design. It is a versatile piece that can be worn with a variety of bottoms and accessories.

KEY FOR SIZES

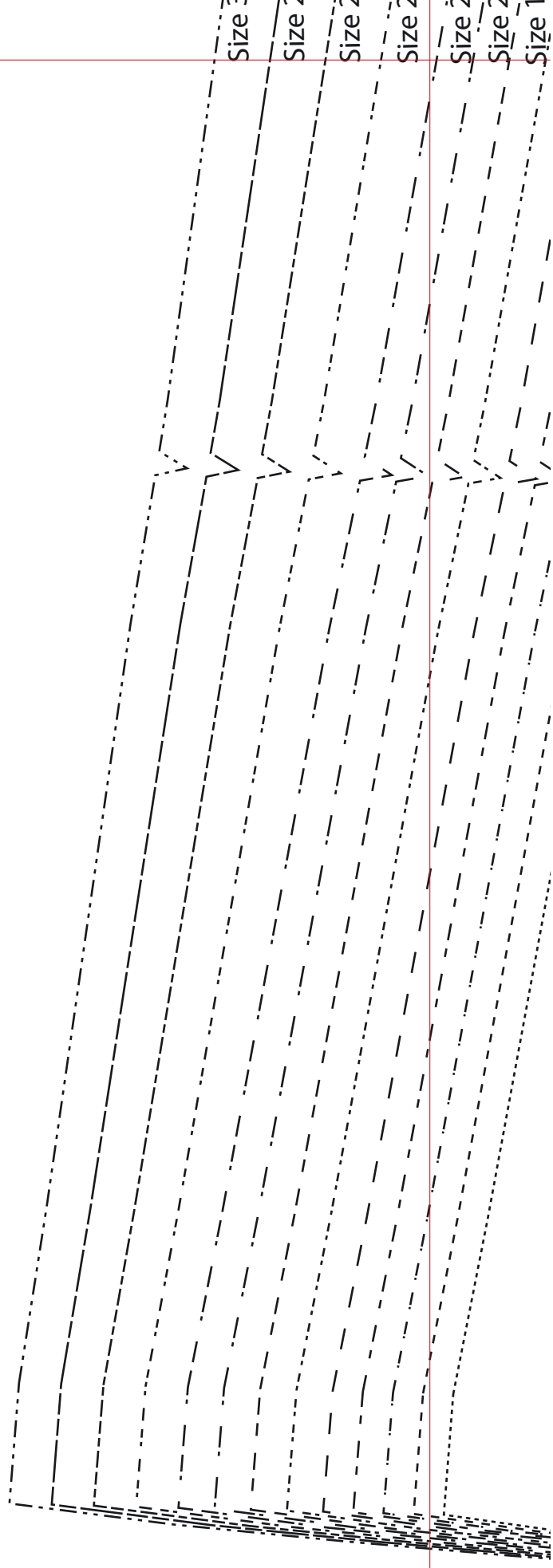
..... Size 6
..... Size 8
..... Size 10
..... Size 12
..... Size 14
..... Size 16
..... Size 18
..... Size 20
..... Size 22
..... Size 24
..... Size 26
..... Size 28
..... Size 30

THE CLOVER TOP
Sleeve
Version C and D
Cut one pattern fabric

Grainline

Cut here for Version C and D

TEST SQUARE
10x10 CM



Size 3

Size 2

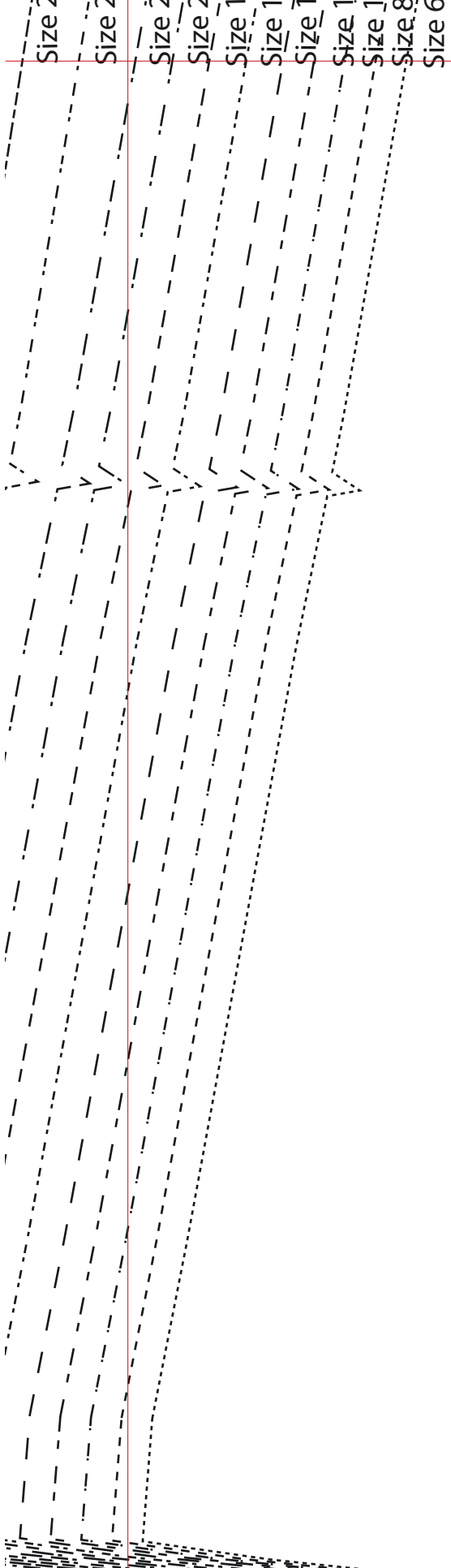
Size 2

Size 2

Size 2

Size 2

Size 1



9

THE CLOVER

Sleeve

Version C a

Cut one pair m

9

THE CLOVER TOP

Sleeve

Version C and D

Cut one pair main fabric

Grainline

Cut here for Version C and D

Size 20

Size 18

Size 16

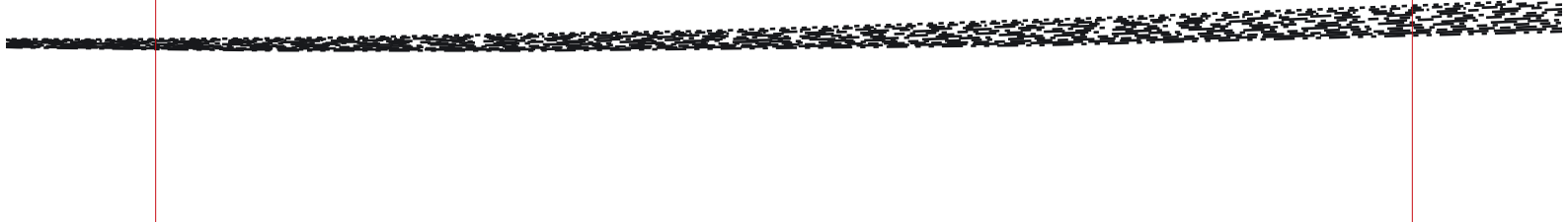
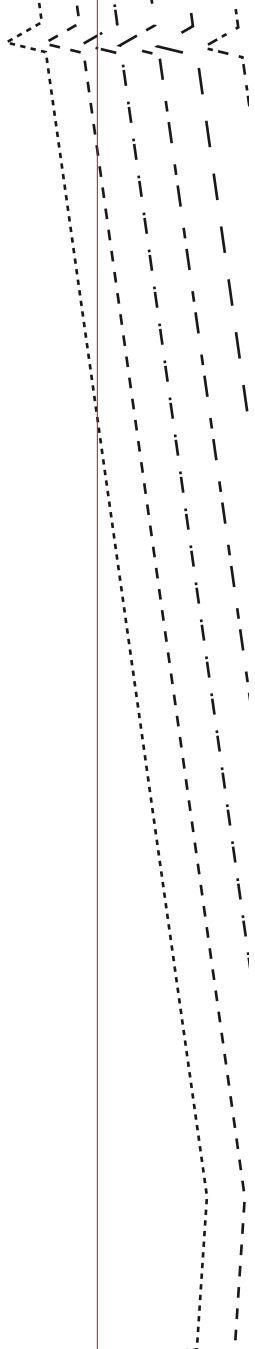
Size 14

Size 12

Size 10

Size 8

Size 6



Size 30

Size 28

Size 26

Size 24

Size 22

Size 20

Size 18

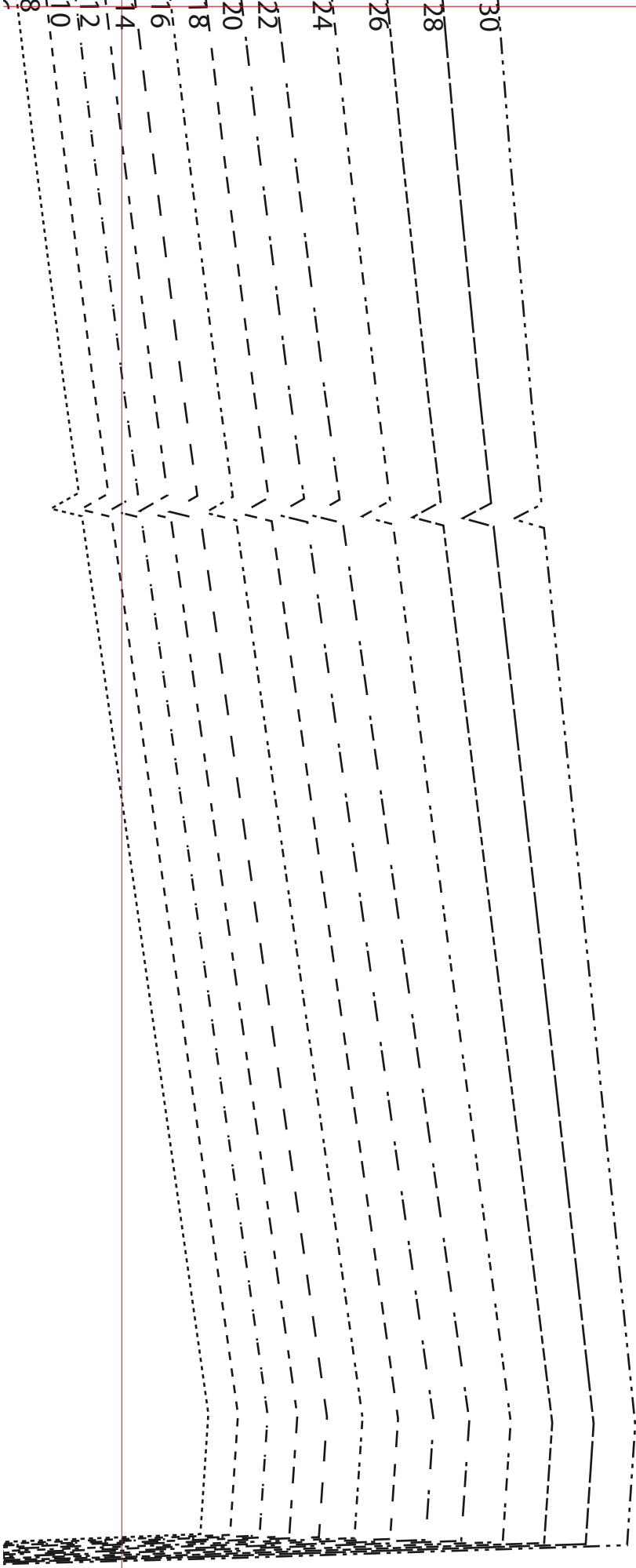
Size 16

Size 14

Size 12

Size 10

Size 8



© Printed in the UK for *Simply Sewing* magazine. Design by Becky Perry (patternpaperscissors.co.uk). Supplied by Our Media Ltd, Bristol, BS1 4ST. For individual, private home use only. Not for commercial or manufacturing purposes or resale.

SIDE 1 OF 1

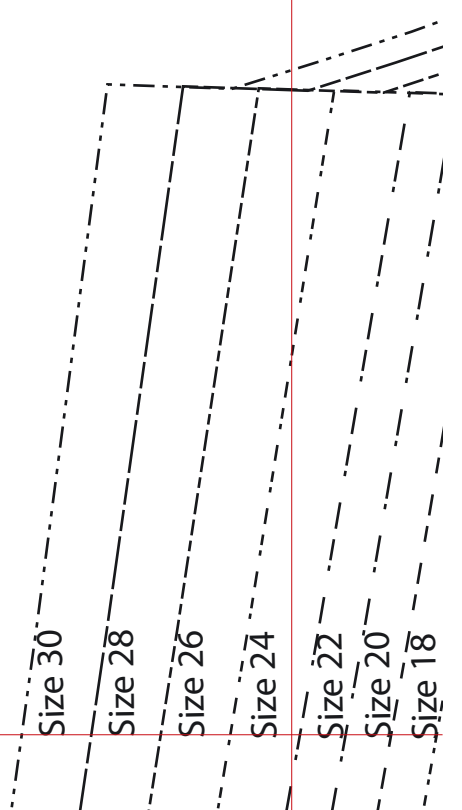
Pattern sheets are printed double sided – you'll need to trace your pattern pieces onto pattern paper rather than cutting out directly from this sheet. Find our guide to pattern tracing at gathered.how/tracing-patterns.

Scan the QR code to head to that page.



KEY FOR SIZES

- = size 6
- = size 8
- = size 10
- = size 12
- = size 14
- = size 16
- = size 18
- = size 20
- = size 22
- = size 24
- = size 26
- = size 28
- = size 30



Size 26

Size 24

Size 22

Size 20

Size 18

Size 16

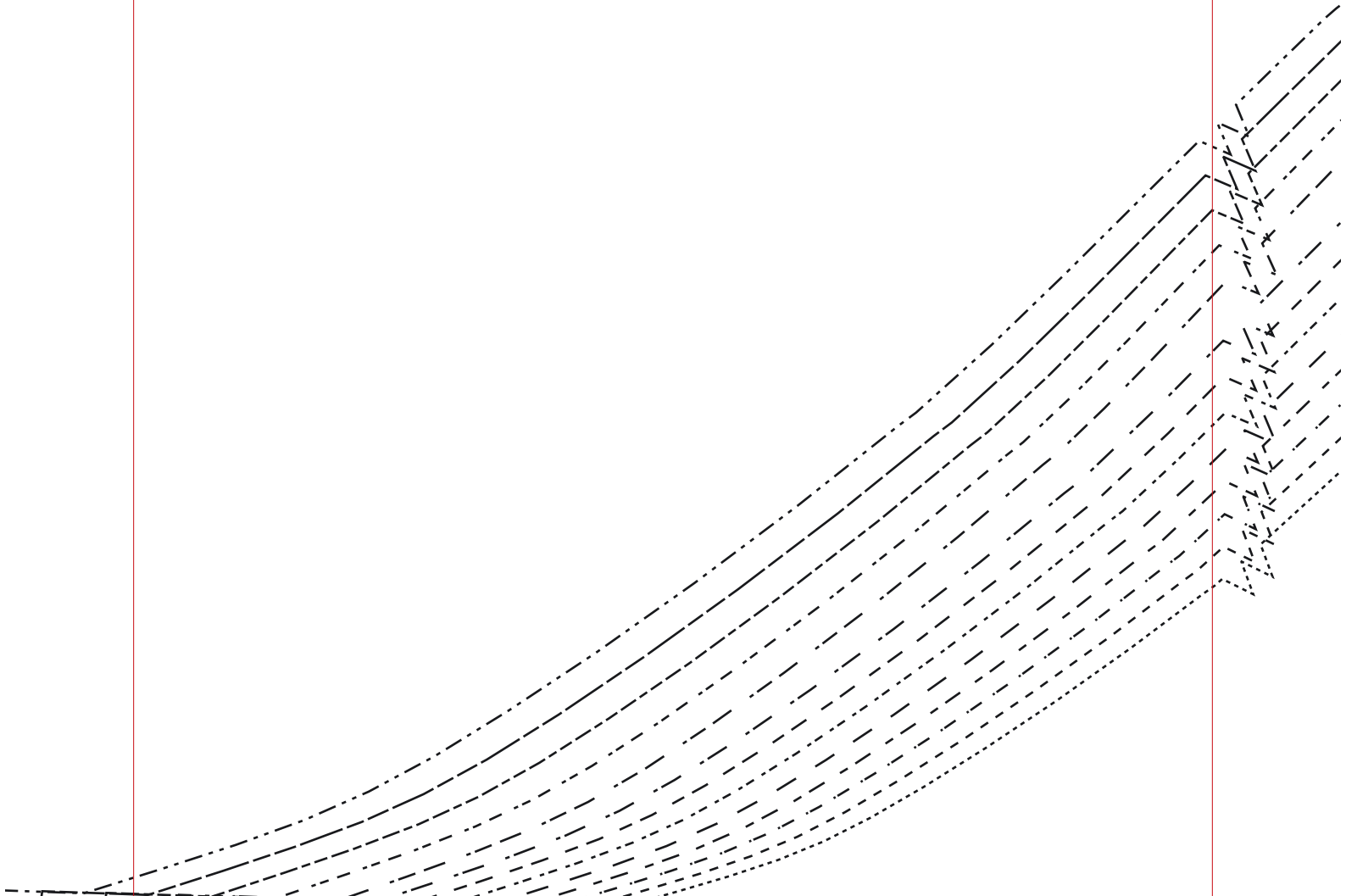
Size 14

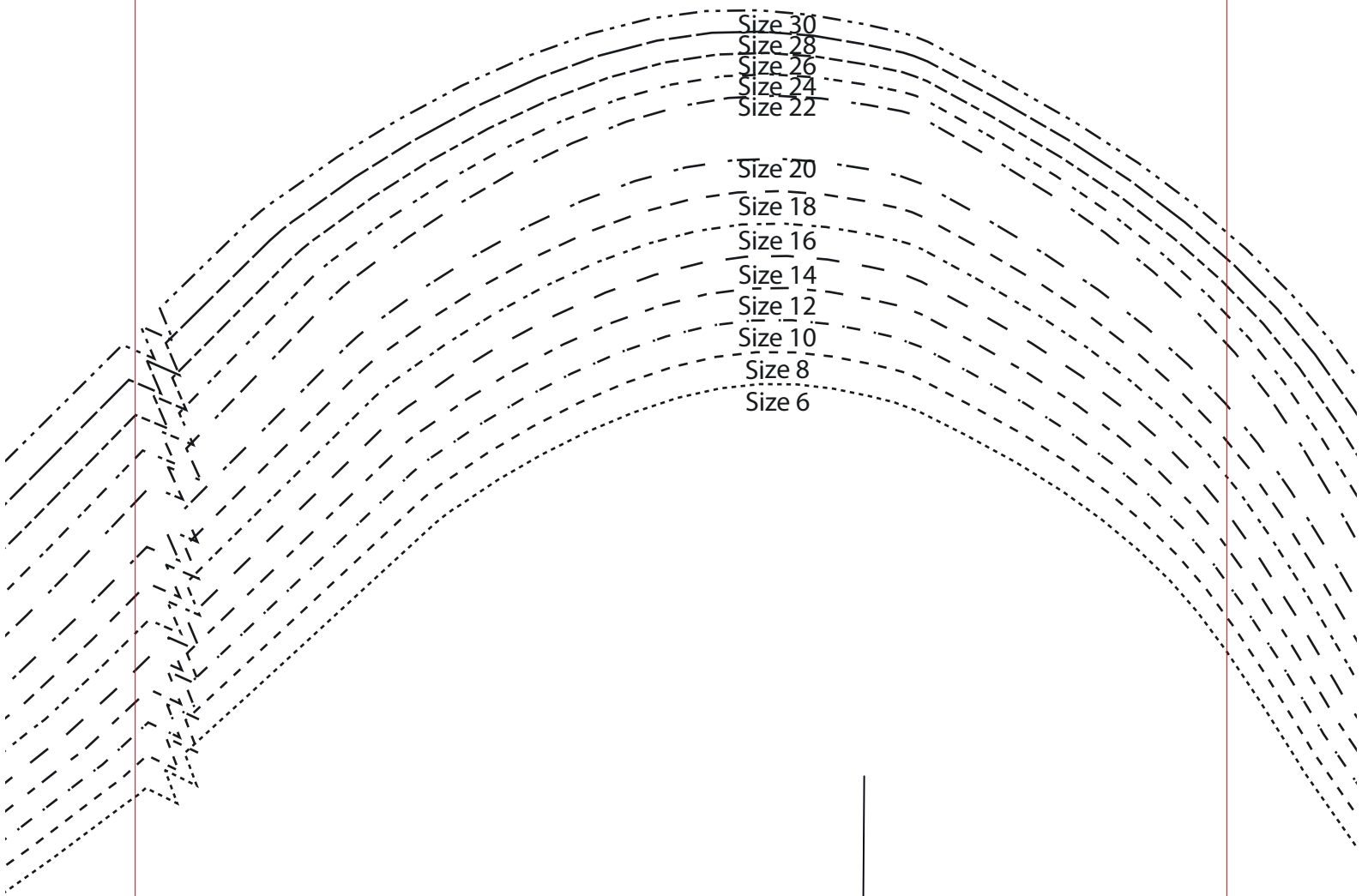
Size 12

Size 10

Size 8

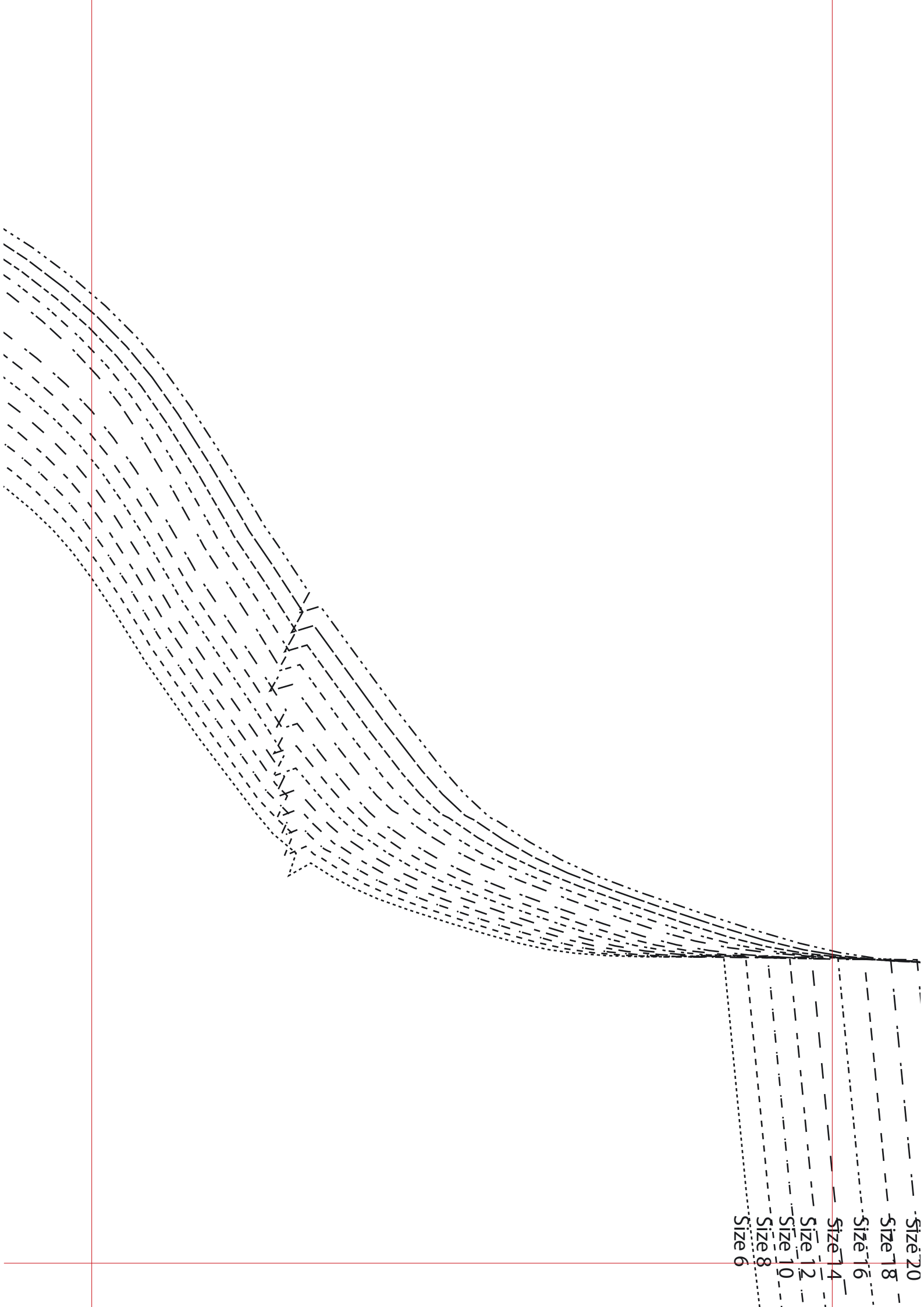
Size 6





Size 30
Size 28
Size 26
Size 24
Size 22

Size 20
Size 18
Size 16
Size 14
Size 12
Size 10
Size 8
Size 6



TEST SQUARE

10x10CM

Size 30

Size 28

Size 26

Size 24

Size 22

Size 20

Size 18

Size 16

Size 14

Size 12

Size 10

Size 8